



MLS 7092672 Lake Home

**\$675,000**

984 sq ft  
3 bedrooms  
1 baths

37257 Twin Bay Drive  
Crosslake MN 56442

Waterfront: Rush-Hen

Status: Active

**Description:**

Affordable Whitefish Chain Retreat on Rush Lake! Escape to the beauty of the Whitefish Chain with this inviting cabin on Rush Lake, offering 84 feet of shoreline, level elevation, a sandy lake bottom, and desirable southern exposure. This charming seasonal getaway features three bedrooms, one bath, convenient main-floor living, and laundry for added comfort and convenience. Enjoy stunning lake views from the spacious deck or unwind in the lakeside hot tub after a day on the water. Boating enthusiasts will appreciate the easy access to the entire Whitefish Chain, along with two docks included for all your waterfront activities. The property also features a two-car garage, providing ample storage for vehicles, boats, and recreational gear. Located just minutes from town, championship golf courses, and fine dining, this cabin offers the perfect balance of relaxation and recreation. Whether you're looking for a peaceful family retreat or an affordable Up North escape, this property checks all the boxes. Best of all, it is priced below tax-assessed value, making it an exceptional opportunity to own a piece of Minnesota's premier lake country. Everything you've been looking for in an Up North getaway awaits on Rush/WFC of Lakes!

**Additional Details:**


Year Built	1950
Lot Acres	0.3
Lot Dimensions	80x196x53x191
Garage Stalls	2
School District	186
Taxes	\$4,411
Taxes with Assessments	\$4,436
Tax Year	2026

**Additional Features:**

**Fuel:** Electric, Natural Gas **Heat:** Forced Air

**Driving Directions:**

From Crosslake take Route 66 N to a Left onto Anchor Point Road to a Right onto Ginseng Patch Road to a Left onto Twin Bay Drive to 37259 Twin Bay Drive.



Listed By:  
Edina Realty, Inc.

Affinity Real Estate Inc. participates in the Regional Multiple Listing Service of Minnesota, Inc Broker Reciprocity (sm) program, allowing us to display other broker's listings on our website. All properties are subject to prior sale, change or withdrawal.



**Call Affinity Real Estate**  
**218-237-3333**  
**info@affinityrealestate.com**



**Affinity Real Estate - 600 Park Avenue South - Park Rapids MN 56470**



website: [www.AffinityRealEstate.com](http://www.AffinityRealEstate.com) | email: [info@affinityrealestate.com](mailto:info@affinityrealestate.com) | office: 218-237-3333 | fax:218-237-3377

**Affinity**  
REAL ESTATE INC

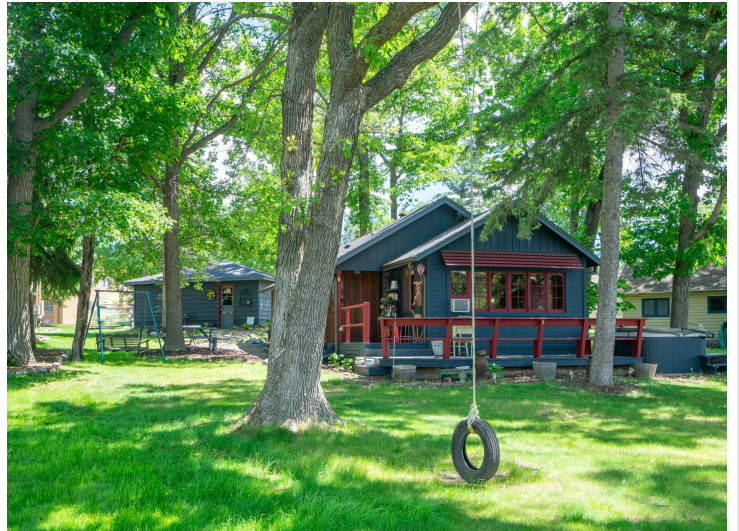
**\$675,000**  
MLS 7092672 Lake Home  
37257 Twin Bay Drive  
Crosslake MN 56442



website: [www.AffinityRealEstate.com](http://www.AffinityRealEstate.com) | email: [info@affinityrealestate.com](mailto:info@affinityrealestate.com) | office: 218-237-3333 | fax: 218-237-3377

**Affinity**  
REAL ESTATE INC

**\$675,000**  
MLS 7092672 Lake Home  
37257 Twin Bay Drive  
Crosslake MN 56442



website: [www.AffinityRealEstate.com](http://www.AffinityRealEstate.com) | email: [info@affinityrealestate.com](mailto:info@affinityrealestate.com) | office: 218-237-3333 | fax: 218-237-3377

**Affinity**  
REAL ESTATE INC

**\$675,000**  
MLS 7092672 Lake Home  
37257 Twin Bay Drive  
Crosslake MN 56442



website: [www.AffinityRealEstate.com](http://www.AffinityRealEstate.com) | email: [info@affinityrealestate.com](mailto:info@affinityrealestate.com) | office: 218-237-3333 | fax:218-237-3377



**\$675,000**  
MLS 7092672 Lake Home  
37257 Twin Bay Drive  
Crosslake MN 56442



website: [www.AffinityRealEstate.com](http://www.AffinityRealEstate.com) | email: [info@affinityrealestate.com](mailto:info@affinityrealestate.com) | office: 218-237-3333 | fax: 218-237-3377

**Affinity**  
REAL ESTATE INC

**\$675,000**  
MLS 7092672 Lake Home  
37257 Twin Bay Drive  
Crosslake MN 56442



website: [www.AffinityRealEstate.com](http://www.AffinityRealEstate.com) | email: [info@affinityrealestate.com](mailto:info@affinityrealestate.com) | office: 218-237-3333 | fax:218-237-3377

**Affinity**  
REAL ESTATE INC

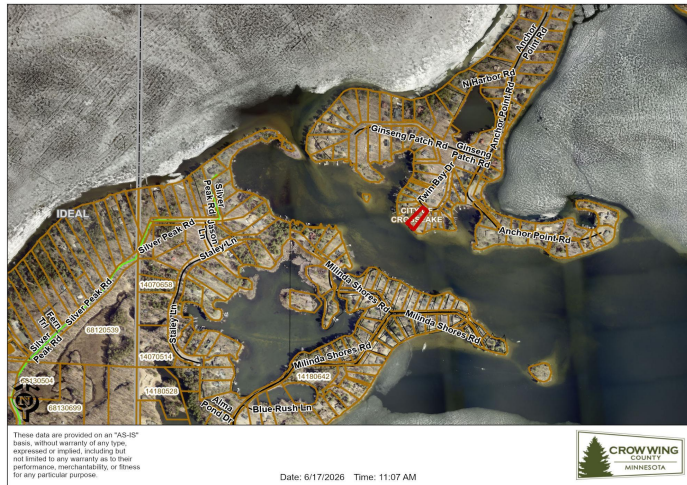
**\$675,000**  
MLS 7092672 Lake Home  
37257 Twin Bay Drive  
Crosslake MN 56442



website: [www.AffinityRealEstate.com](http://www.AffinityRealEstate.com) | email: [info@affinityrealestate.com](mailto:info@affinityrealestate.com) | office: 218-237-3333 | fax:218-237-3377

**Affinity**  
REAL ESTATE INC

**\$675,000**  
MLS 7092672 Lake Home  
37257 Twin Bay Drive  
Crosslake MN 56442



website: [www.AffinityRealEstate.com](http://www.AffinityRealEstate.com) | email: [info@affinityrealestate.com](mailto:info@affinityrealestate.com) | office: 218-237-3333 | fax:218-237-3377



**\$675,000**  
 MLS 7092672 Lake Home  
 37257 Twin Bay Drive  
 Crosslake MN 56442