



MLS 7092715 Lake Home

\$599,000

2,046 sq ft
5 bedrooms
2 baths

10446 Shady Lane
East Gull Lake MN 56401

Waterfront: Ruth

Status: Active

Description:

There is something incredibly special about a lake that feels like your own. You'll experience this on Ruth Lake in East Gull Lake.

Sitting on .35 acres with 65 ft of lake frontage, this remodeled Ruth Lake home checks every box, natural beauty, modern updates, and unbeatable convenience.

Inside you'll find 2046 finished sq ft., and an updated kitchen with fresh cabinetry and back splash. Five bedrooms and 2 bathrooms give everyone room to spread out. The 24x28 two-stall detached garage handles the vehicles, lake toys, and all the gear that comes with it.

No public access means no crowded boat traffic, just peaceful water. You may come to expect to see a resident loon pair that returns every year.

Ruth Lake has a genuine close-knit feel. Bonus: East Gull Lake sprays for bugs, so you can actually sit outside and enjoy summer evenings without retreating inside.

This home feels like it's nestled in a Northwoods escape, but you're just minutes from great dining, golf, and all the Brainerd Lakes Area has to offer, with a quick drive into Brainerd/Baxter for everyday errands.

Whether you're looking for a year-round residence or a peaceful lakeside getaway, this turn-key Ruth Lake home offers what you're looking for. Come see the sunrise for yourself!

Additional Details:

Year Built 1996
Lot Acres 0.35
Lot Dimensions 60x243x66x241
Garage Stalls 2

School District 181



Listed By: Ashworth Real Estate \$3,020

Taxes with Assessments \$3,106

Affinity Real Estate Inc. participates in the Regional Multiple Listing Service of Minnesota, Inc Broker Reciprocity (sm) program, allowing us to display other broker's listings on our website. All properties are subject to change or withdrawal.

Additional Features:

Basement: Block, Finished **Fuel:** Natural Gas **Garage:** 2 **Heat:** Forced Air **Sewer:** City Sewer/Connected **Water:** Drilled, Well **Air Conditioning:** Central Air



Call Affinity Real Estate

218-237-3333

info@affinityrealestate.com



Affinity Real Estate - 600 Park Avenue South - Park Rapids MN 56470

Driving Directions:

From Route 274 North, Turn left on County Road 216, Drive 2.1 miles, Turn left onto Shady Lane, Property will be on left



website: www.AffinityRealEstate.com | email: info@affinityrealestate.com | office: 218-237-3333 | fax:218-237-3377



\$599,000
MLS 7092715 Lake Home
10446 Shady Lane
East Gull Lake MN 56401



website: www.AffinityRealEstate.com | email: info@affinityrealestate.com | office: 218-237-3333 | fax: 218-237-3377

Affinity
REAL ESTATE INC

\$599,000
MLS 7092715 Lake Home
10446 Shady Lane
East Gull Lake MN 56401



website: www.AffinityRealEstate.com | email: info@affinityrealestate.com | office: 218-237-3333 | fax: 218-237-3377

Affinity
REAL ESTATE INC

\$599,000
MLS 7092715 Lake Home
10446 Shady Lane
East Gull Lake MN 56401



website: www.AffinityRealEstate.com | email: info@affinityrealestate.com | office: 218-237-3333 | fax:218-237-3377

Affinity
REAL ESTATE INC

\$599,000
MLS 7092715 Lake Home
10446 Shady Lane
East Gull Lake MN 56401



website: www.AffinityRealEstate.com | email: info@affinityrealestate.com | office: 218-237-3333 | fax: 218-237-3377

Affinity
REAL ESTATE INC

\$599,000
MLS 7092715 Lake Home
10446 Shady Lane
East Gull Lake MN 56401



website: www.AffinityRealEstate.com | email: info@affinityrealestate.com | office: 218-237-3333 | fax:218-237-3377

Affinity
REAL ESTATE INC

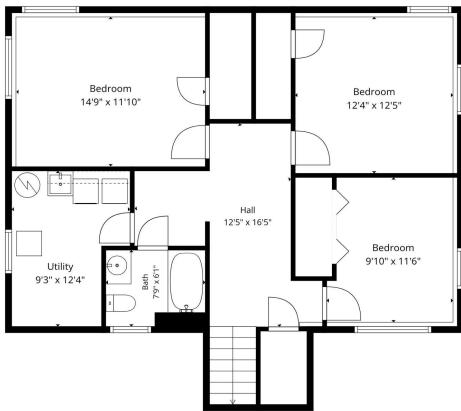
\$599,000
MLS 7092715 Lake Home
10446 Shady Lane
East Gull Lake MN 56401



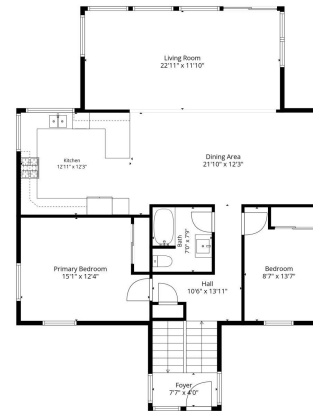
website: www.AffinityRealEstate.com | email: info@affinityrealestate.com | office: 218-237-3333 | fax:218-237-3377

Affinity
REAL ESTATE INC

\$599,000
MLS 7092715 Lake Home
10446 Shady Lane
East Gull Lake MN 56401



TOTAL: 2039 sq. ft.
 Basement: 815 sq. ft., 1st floor: 1224 sq. ft.
 EXCLUDED AREAS: UTILITY: 100 sq. ft., WALLS: 150 sq. ft.
Measurements are Estimated and Not for Sale. Requirements for a Licensed Brokerage.



TOTAL: 2039 sq. ft.
 Basement: 815 sq. ft., 1st floor: 1224 sq. ft.
 EXCLUDED AREAS: UTILITY: 100 sq. ft., WALLS: 150 sq. ft.
Measurements are Estimated and Not for Sale. Requirements for a Licensed Brokerage.

website: www.AffinityRealEstate.com | email: info@affinityrealestate.com | office: 218-237-3333 | fax: 218-237-3377



\$599,000
 MLS 7092715 Lake Home
 10446 Shady Lane
 East Gull Lake MN 56401



TOTAL: 2039 sq. ft.
Basement: 815 sq. ft., 1st floor: 1224 sq. ft.
EXCLUDED AREAS: UTILITY: 100 sq. ft., WALLS: 150 sq. ft.
Measurements are Estimated and Not to Scale. All measurements for a certain purpose.

website: www.AffinityRealEstate.com | email: info@affinityrealestate.com | office: 218-237-3333 | fax: 218-237-3377



\$599,000
MLS 7092715 Lake Home
10446 Shady Lane
East Gull Lake MN 56401