



MLS 7092790 Residential

**\$259,900**

1,840 sq ft  
3 bedrooms  
2 baths

2612 Bixby Avenue  
Bemidji MN 56601

Status: Active

**Description:**

Welcome home to this inviting 3-bedroom, 2-bath property nestled in one of Bemidji's most desirable neighborhoods. Enjoy the perfect combination of comfort, convenience, and classic charm, all just minutes from beautiful Lake Bemidji, parks, schools, shopping, restaurants, and medical facilities. Step inside to discover the warmth and character of original hardwood floors that add timeless appeal. The functional floor plan offers comfortable living spaces for family and friends, while the attached garage provides everyday convenience and additional storage, and a newer roof and siding, give you peace of mind for years to come. Outside, you'll love the brand-new deck overlooking a fantastic backyard—perfect for summer barbecues, morning coffee, entertaining guests, or simply enjoying the outdoors. Whether you're looking for your first home, a place to grow, or a property in an unbeatable location, this charming Bemidji home is one you won't want to miss. Schedule your showing today and discover all that this wonderful property has to offer!

**Additional Details:**

Year Built	1956
Lot Acres	0.23
Lot Dimensions	75x135
Garage Stalls	1
School District	31
Taxes	\$2,612
Taxes with Assessments	\$2,612
Tax Year	2026

**Additional Features:**

**Basement:** Finished **Fuel:** Natural Gas, Wood **Garage:** 1 **Heat:** Forced Air **Sewer:** City Sewer/Connected **Water:** City Water/Connected **Air Conditioning:** Central Air

**Driving Directions:**

North on Bemidji Ave to right on 26th St to left on Bixby Ave, property on the right.



Listed By:  
Real Broker, LLC

Affinity Real Estate Inc. participates in the Regional Multiple Listing Service of Minnesota, Inc Broker Reciprocity (sm) program, allowing us to display other broker's listings on our website. All properties are subject to prior sale, change or withdrawal.



**Call Affinity Real Estate**

**218-237-3333**

**info@affinityrealestate.com**



**Affinity Real Estate - 600 Park Avenue South - Park Rapids MN 56470**



website: [www.AffinityRealEstate.com](http://www.AffinityRealEstate.com) | email: [info@affinityrealestate.com](mailto:info@affinityrealestate.com) | office: 218-237-3333 | fax:218-237-3377

**Affinity**  
REAL ESTATE INC

**\$259,900**  
MLS 7092790 Residential  
2612 Bixby Avenue  
Bemidji MN 56601



website: [www.AffinityRealEstate.com](http://www.AffinityRealEstate.com) | email: [info@affinityrealestate.com](mailto:info@affinityrealestate.com) | office: 218-237-3333 | fax:218-237-3377

**Affinity**  
REAL ESTATE INC

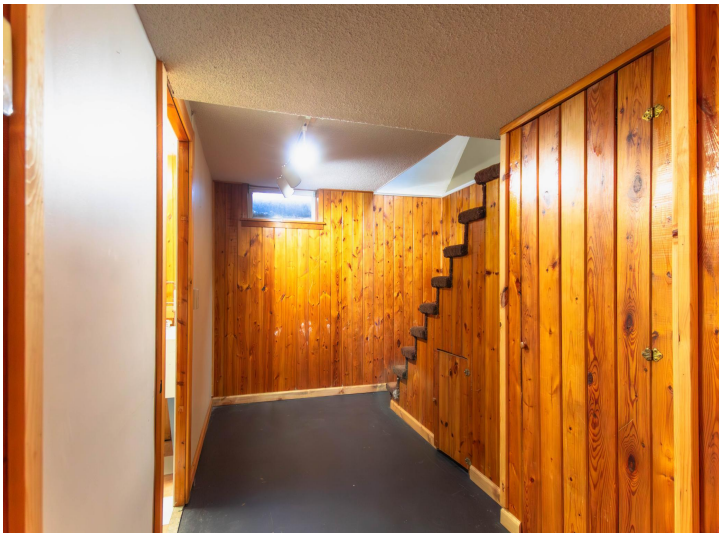
**\$259,900**  
MLS 7092790 Residential  
2612 Bixby Avenue  
Bemidji MN 56601



website: [www.AffinityRealEstate.com](http://www.AffinityRealEstate.com) | email: [info@affinityrealestate.com](mailto:info@affinityrealestate.com) | office: 218-237-3333 | fax:218-237-3377

**Affinity**  
REAL ESTATE INC

**\$259,900**  
MLS 7092790 Residential  
2612 Bixby Avenue  
Bemidji MN 56601



website: [www.AffinityRealEstate.com](http://www.AffinityRealEstate.com) | email: [info@affinityrealestate.com](mailto:info@affinityrealestate.com) | office: 218-237-3333 | fax:218-237-3377



**\$259,900**  
MLS 7092790 Residential  
2612 Bixby Avenue  
Bemidji MN 56601



website: [www.AffinityRealEstate.com](http://www.AffinityRealEstate.com) | email: [info@affinityrealestate.com](mailto:info@affinityrealestate.com) | office: 218-237-3333 | fax:218-237-3377



**\$259,900**  
MLS 7092790 Residential  
2612 Bixby Avenue  
Bemidji MN 56601