



MLS 7092823 Lake Home

\$584,900

2,500 sq ft
3 bedrooms
3 baths

8343 Timber Lane
Nisswa MN 56468

Waterfront: Gull

Status: Active

Description:

Homes like this don't come along often! This beautiful 3-bedroom, 3-bathroom home offers the perfect blend of privacy, recreation, and convenience with deeded access to Gull Lake and the Gull Lake Chain.

Imagine starting your mornings with coffee while watching deer, turkeys, black bear, and other wildlife wander across your nearly 3-acre property. Then spend your afternoons enjoying day dock access on Gull Lake, known for its amazing fishing and endless days on the water.

Location truly sets this property apart:


- ?? Gull Lake is right across the street
- ?? Deeded day dock access to the Gull Lake Chain
- ?? Just 1 minute from Bar Harbor, Zorbaz, and Cowboys
- ?? Direct access to the Paul Bunyan Trail, offering scenic walks and bike rides to Grand View Lodge and all the incredible amenities the resort has to offer.

Whether you're looking for a year-round home, a weekend retreat, or your own slice of lake country paradise, this property checks all the boxes.

Additional Details:

Year Built	1995
Lot Acres	2.491
Lot Dimensions	200 x 552 x 526 x 107 x 94
Garage Stalls	2
School District	181
Taxes	\$2,718
Taxes with Assessments	\$2,804
Tax Year	2026

Additional Features:



at: Forced Air
Listed By:
Woods to Water Real Estate

Affinity Real Estate Inc. participates in the Regional Multiple Listing Service of Minnesota, Inc Broker Reciprocity (sm) program, allowing us to display other broker's listings on our website. All properties are subject to prior sale, change or withdrawal.



Call Affinity Real Estate

218-237-3333

info@affinityrealestate.com

From Bar Harbor Supper Club head west on Interlachen road. Take your first right onto Gullwood Road and take your first right onto Timber Lane. 8343 will be 4 miles on the right hand side.



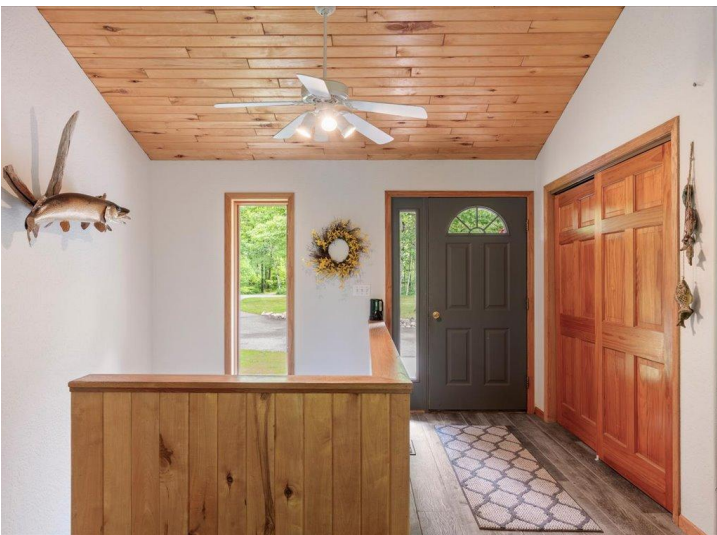
Affinity Real Estate - 600 Park Avenue South - Park Rapids MN 56470



website: www.AffinityRealEstate.com | email: info@affinityrealestate.com | office: 218-237-3333 | fax: 218-237-3377



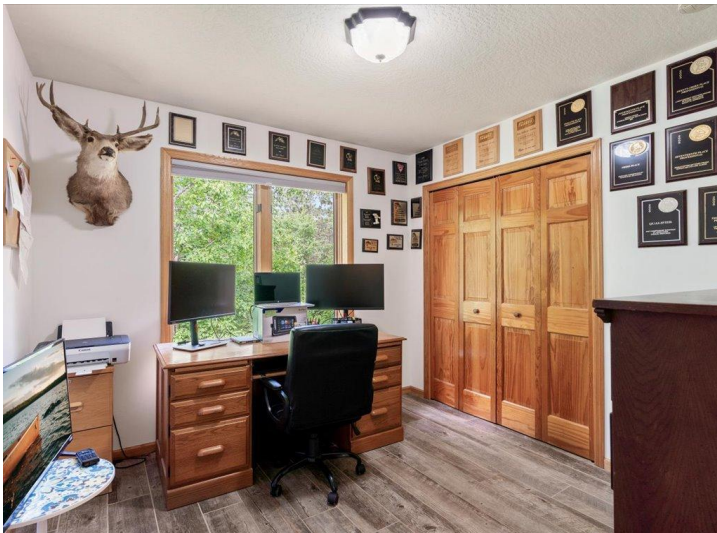
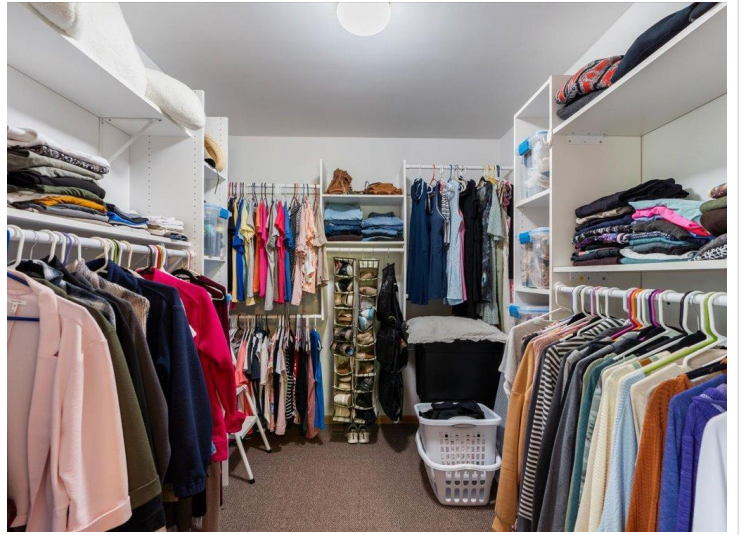
\$584,900
MLS 7092823 Lake Home
8343 Timber Lane
Nisswa MN 56468



website: www.AffinityRealEstate.com | email: info@affinityrealestate.com | office: 218-237-3333 | fax:218-237-3377

Affinity
REAL ESTATE INC

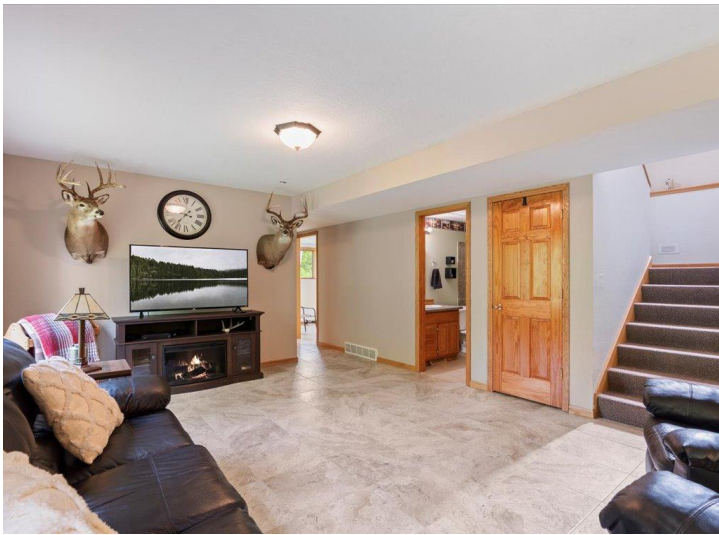
\$584,900
MLS 7092823 Lake Home
8343 Timber Lane
Nisswa MN 56468



website: www.AffinityRealEstate.com | email: info@affinityrealestate.com | office: 218-237-3333 | fax:218-237-3377

Affinity
REAL ESTATE INC

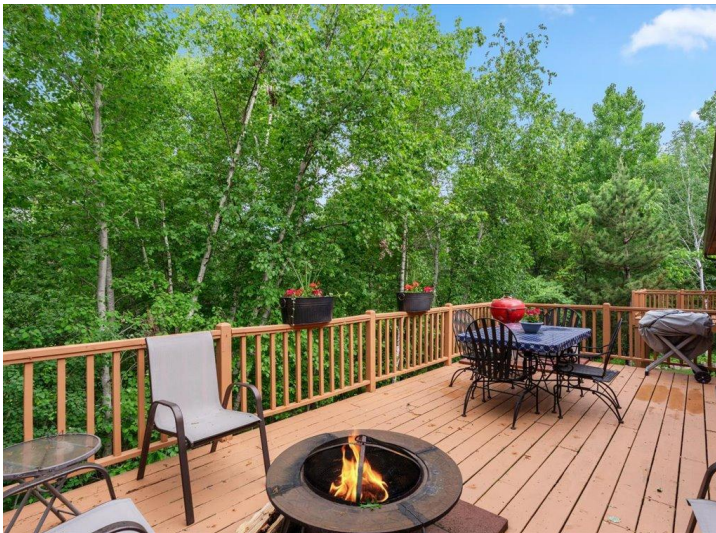
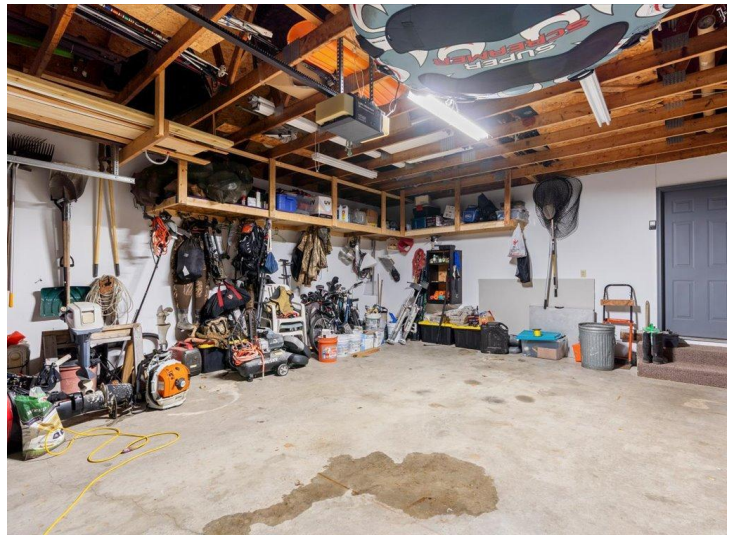
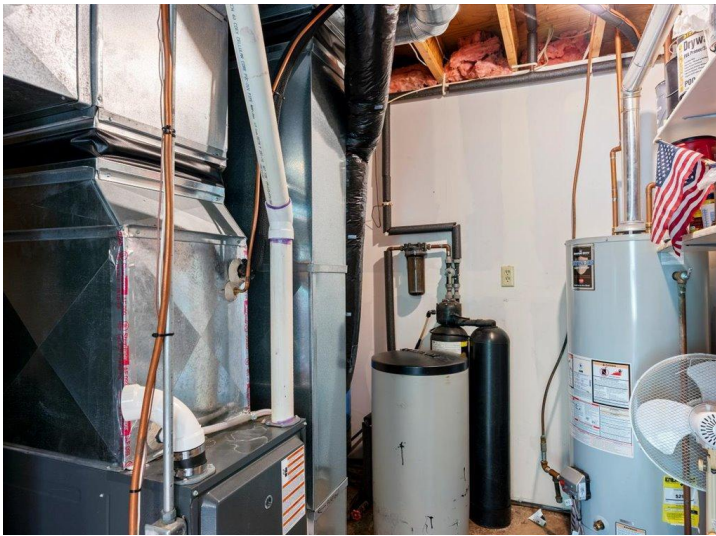
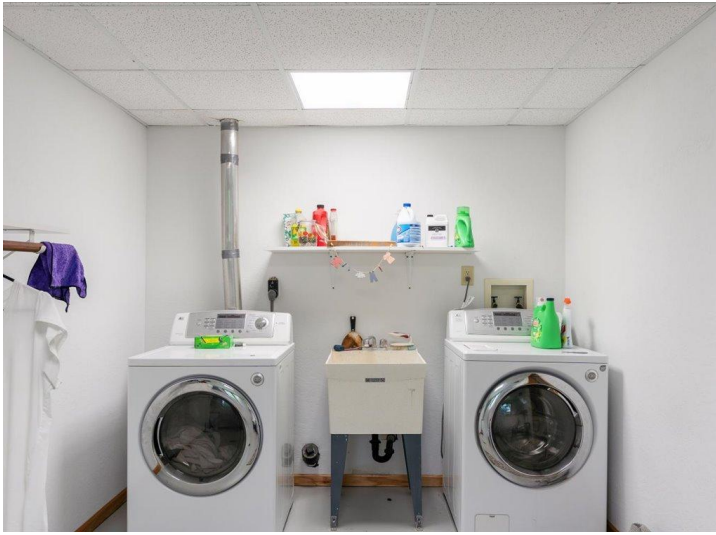
\$584,900
MLS 7092823 Lake Home
8343 Timber Lane
Nisswa MN 56468



website: www.AffinityRealEstate.com | email: info@affinityrealestate.com | office: 218-237-3333 | fax:218-237-3377

Affinity
REAL ESTATE INC

\$584,900
MLS 7092823 Lake Home
8343 Timber Lane
Nisswa MN 56468



website: www.AffinityRealEstate.com | email: info@affinityrealestate.com | office: 218-237-3333 | fax:218-237-3377



\$584,900
MLS 7092823 Lake Home
8343 Timber Lane
Nisswa MN 56468



website: www.AffinityRealEstate.com | email: info@affinityrealestate.com | office: 218-237-3333 | fax:218-237-3377



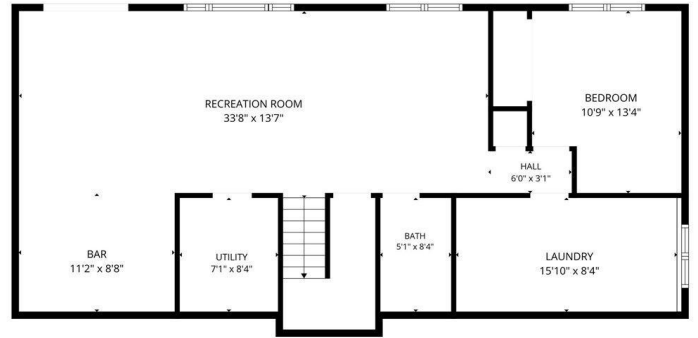
\$584,900
MLS 7092823 Lake Home
8343 Timber Lane
Nisswa MN 56468



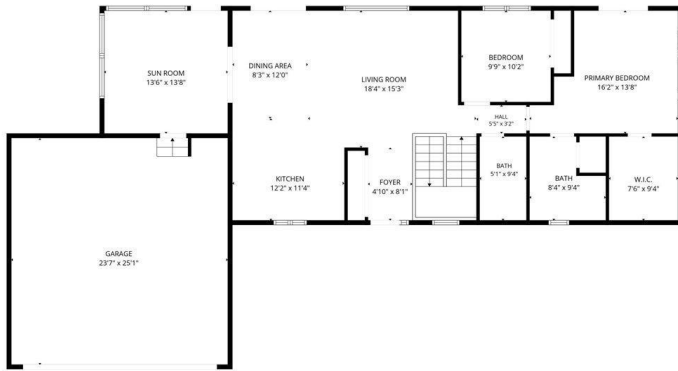
website: www.AffinityRealEstate.com | email: info@affinityrealestate.com | office: 218-237-3333 | fax:218-237-3377

Affinity
REAL ESTATE INC

\$584,900
MLS 7092823 Lake Home
8343 Timber Lane
Nisswa MN 56468



FLOOR PLAN CREATED BY CIBICASA APP. MEASUREMENTS DEEMED HIGHLY RELIABLE BUT NOT GUARANTEED.



FLOOR PLAN CREATED BY CIBICASA APP. MEASUREMENTS DEEMED HIGHLY RELIABLE BUT NOT GUARANTEED.



FLOOR PLAN CREATED BY CIBICASA APP. MEASUREMENTS DEEMED HIGHLY RELIABLE BUT NOT GUARANTEED.

website: www.AffinityRealEstate.com | email: info@affinityrealestate.com | office: 218-237-3333 | fax: 218-237-3377

Affinity
REAL ESTATE INC

\$584,900
MLS 7092823 Lake Home
8343 Timber Lane
Nisswa MN 56468