



MLS 7092839 Commercial

\$249,000

2516 Hannah Avenue
Bemidji MN 56601

Status: Active

Description:

Rare opportunity to own a well-established, turn-key business with a loyal customer base and a 30-year reputation in the Bemidji community. Pet Zone is the area's premier destination for pet lovers, featuring a customer loyalty program with over 1,200 active members and a dedicated, experienced staff committed to exceptional customer service.

The sale includes inventory, equipment, fixtures, and live animals, allowing a new owner to step in and continue operations from day one. As the only pet store in the area offering live small pets, fish, reptiles, birds, and small animals, Pet Zone has carved out a unique niche in the local market. In addition to live pets, the business offers a wide selection of pet food, treats, habitats, aquariums, enclosures, bedding, supplies, and accessories for pets of all shapes and sizes.

The real estate is not included in the sale. The business currently operates in a leased commercial space, and the buyer will have the opportunity to negotiate a new lease with the property owner.

Whether you're an entrepreneur, animal enthusiast, or investor seeking a proven business with strong community support, Pet Zone offers a unique opportunity to own a thriving, established operation with a loyal following and significant growth potential.

Additional Details:

Year Built	2007
Lot Dimensions	49.6'x35'
School District	31
Taxes	\$66,788
Taxes with Assessments	\$66,788
Tax Year	2026

Additional Features:

Fuel: Natural Gas **Heat:** Forced Air **Sewer:** City Sewer/Connected **Water:** City Water/Connected

Driving Directions:

Highway 197 west



Listed By:
Grimes Realty

Affinity Real Estate Inc. participates in the Regional Multiple Listing Service of Minnesota, Inc Broker Reciprocity (sm) program, allowing us to display other broker's listings on our website. All properties are subject to prior sale, change or withdrawal.



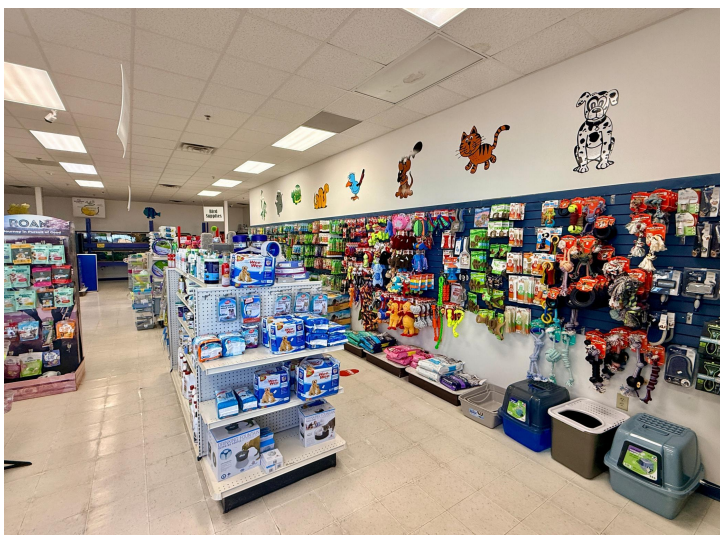
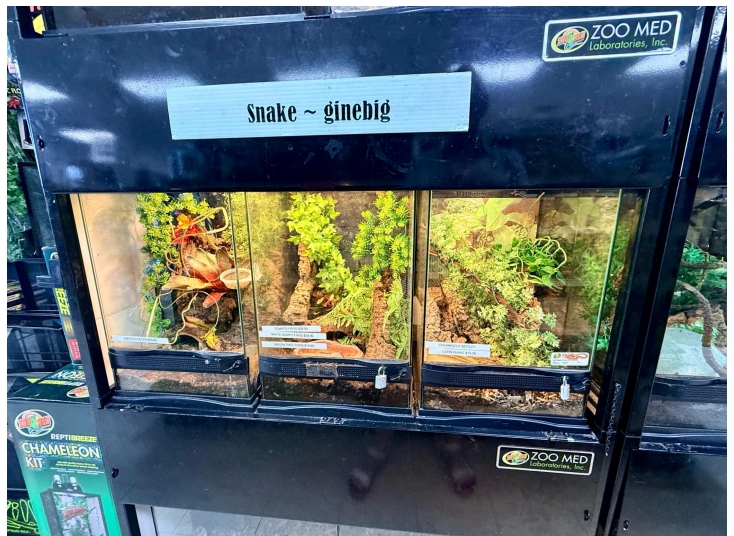
Call Affinity Real Estate

218-237-3333

info@affinityrealestate.com



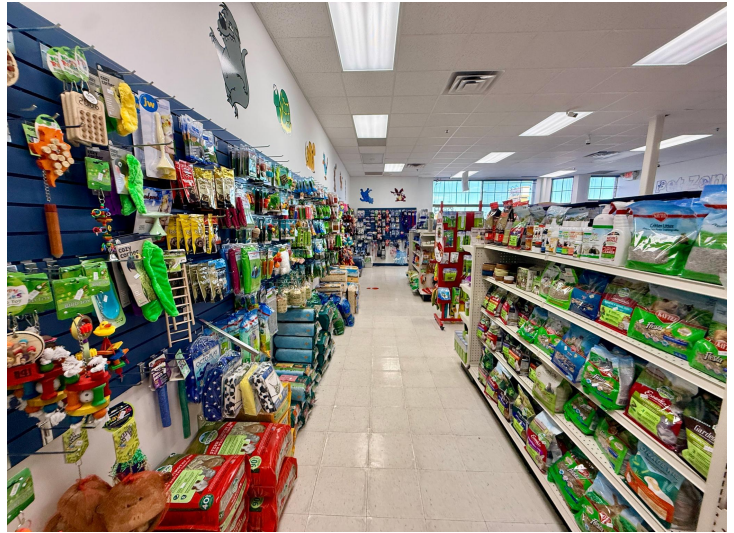
Affinity Real Estate - 600 Park Avenue South - Park Rapids MN 56470



website: www.AffinityRealEstate.com | email: info@affinityrealestate.com | office: 218-237-3333 | fax: 218-237-3377



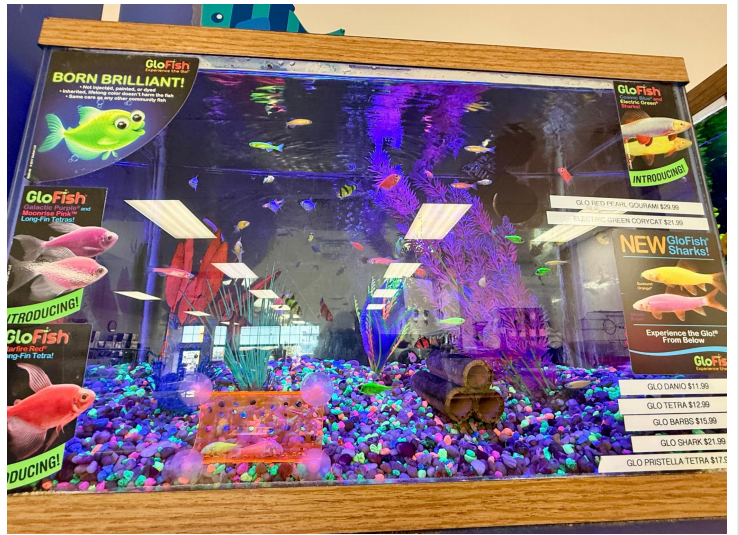
\$249,000
 MLS 7092839 Commercial
 2516 Hannah Avenue
 Bemidji MN 56601



website: www.AffinityRealEstate.com | email: info@affinityrealestate.com | office: 218-237-3333 | fax: 218-237-3377

Affinity
REAL ESTATE INC

\$249,000
MLS 7092839 Commercial
2516 Hannah Avenue
Bemidji MN 56601



website: www.AffinityRealEstate.com | email: info@affinityrealestate.com | office: 218-237-3333 | fax: 218-237-3377



\$249,000
 MLS 7092839 Commercial
 2516 Hannah Avenue
 Bemidji MN 56601



website: www.AffinityRealEstate.com | email: info@affinityrealestate.com | office: 218-237-3333 | fax:218-237-3377



\$249,000
 MLS 7092839 Commercial
 2516 Hannah Avenue
 Bemidji MN 56601