



MLS 7092936 Residential

**\$239,900**

1,280 sq ft  
2 bedrooms  
1 baths

24490 County Road 19  
Merrifield MN 56465

Status: Coming Soon

**Description:**

Private 5-acre heavily wooded property with natural setting. The spacious two-bedroom one bath home features open main floor living with a large, covered porch, newer furnace, updated kitchen and a 60x32 attached, insulated, and heated garage/shop. Country living with mature trees yet located close to town.

**Additional Details:**

Year Built	1974
Lot Acres	5
Lot Dimensions	330x660
Garage Stalls	4
School District	181
Taxes	\$1,452
Taxes with Assessments	\$1,452
Tax Year	2026

**Additional Features:**

**Basement:** None **Fuel:** Propane **Garage:** 4 **Heat:** Forced Air **Sewer:** Tank with Drainage Field **Water:** Drilled, Private, Well **Air Conditioning:** None

**Driving Directions:**

24490 County Road 19



Listed By:  
RE/MAX Results - Nisswa

Affinity Real Estate Inc. participates in the Regional Multiple Listing Service of Minnesota, Inc Broker Reciprocity (sm) program, allowing us to display other broker's listings on our website. All properties are subject to prior sale, change or withdrawal.



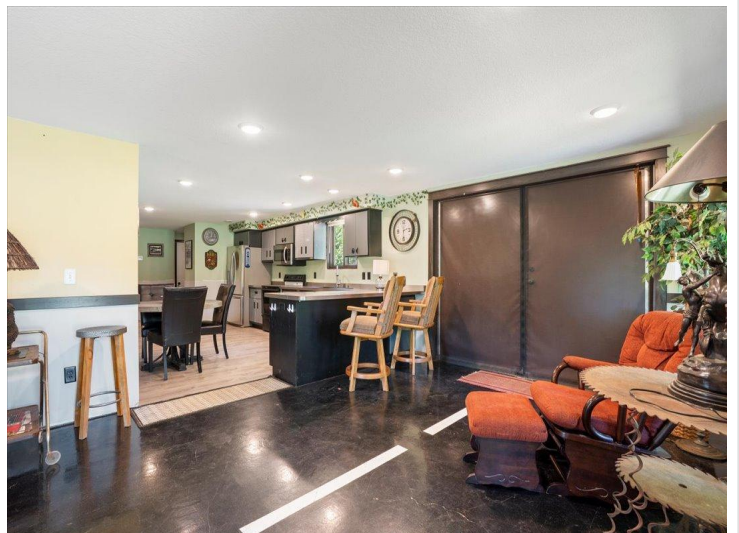
**Call Affinity Real Estate**

**218-237-3333**

**info@affinityrealestate.com**



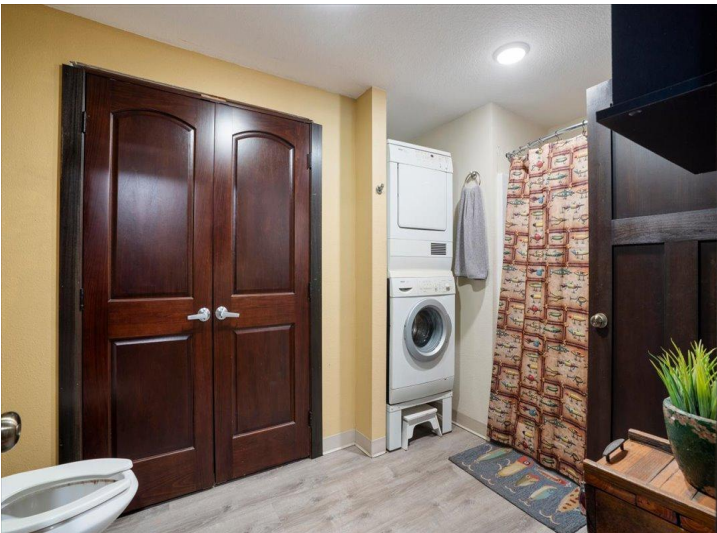
**Affinity Real Estate - 600 Park Avenue South - Park Rapids MN 56470**



website: [www.AffinityRealEstate.com](http://www.AffinityRealEstate.com) | email: [info@affinityrealestate.com](mailto:info@affinityrealestate.com) | office: 218-237-3333 | fax:218-237-3377



**\$239,900**  
MLS 7092936 Residential  
24490 County Road 19  
Merrifield MN 56465



website: [www.AffinityRealEstate.com](http://www.AffinityRealEstate.com) | email: [info@affinityrealestate.com](mailto:info@affinityrealestate.com) | office: 218-237-3333 | fax: 218-237-3377

**Affinity**  
REAL ESTATE INC

**\$239,900**  
MLS 7092936 Residential  
24490 County Road 19  
Merrifield MN 56465



website: [www.AffinityRealEstate.com](http://www.AffinityRealEstate.com) | email: [info@affinityrealestate.com](mailto:info@affinityrealestate.com) | office: 218-237-3333 | fax:218-237-3377

**Affinity**  
REAL ESTATE INC

**\$239,900**  
MLS 7092936 Residential  
24490 County Road 19  
Merrifield MN 56465



website: [www.AffinityRealEstate.com](http://www.AffinityRealEstate.com) | email: [info@affinityrealestate.com](mailto:info@affinityrealestate.com) | office: 218-237-3333 | fax:218-237-3377



**\$239,900**  
MLS 7092936 Residential  
24490 County Road 19  
Merrifield MN 56465



website: [www.AffinityRealEstate.com](http://www.AffinityRealEstate.com) | email: [info@affinityrealestate.com](mailto:info@affinityrealestate.com) | office: 218-237-3333 | fax: 218-237-3377

**Affinity**  
REAL ESTATE INC

**\$239,900**  
MLS 7092936 Residential  
24490 County Road 19  
Merrifield MN 56465



website: [www.AffinityRealEstate.com](http://www.AffinityRealEstate.com) | email: [info@affinityrealestate.com](mailto:info@affinityrealestate.com) | office: 218-237-3333 | fax:218-237-3377



**\$239,900**  
MLS 7092936 Residential  
24490 County Road 19  
Merrifield MN 56465