



MLS 7093097 Lake Home

\$699,900

2,480 sq ft
4 bedrooms
3 baths

27884 86th Avenue
Hawley MN 56549

Waterfront: Unnamed Lake

Status: Active

Description:

Tucked away at the end of a private, tree-lined drive, this "Lake Fifteen" retreat offers privacy, outdoor living & room to roam. Step inside to an open-concept living, dining, kitchen area with vaulted ceilings, laminate floors & views of the surrounding property! The kitchen features stainless appliances, gas stove, movable butcher block island & large pantry. The main level includes a primary suite with walk-in closet & private bath featuring a custom vanity, tile shower & tile floors, plus a second bedroom, full bath & convenient laundry. Just up a few steps, you'll find a large family room with dry bar & entertainment storage, two additional bedrooms, a flexible bonus space, 3/4 bath & access to a covered deck great for quiet evenings. Outside, enjoy your 3.5 acres with spacious grassy areas, landscaped flower beds & concrete patio. The oversized, attached garage has in-floor heat & a 30x40 outbuilding offers RV hookup & 220 electric. Lake Fifteen, known for great bass & crappie fishing, is just minutes from Rollag & an easy 30-min drive to the FM area. Enjoy the perfect blend of lake life, privacy & versatility in one exceptional property!

Additional Details:

Year Built	2021
Lot Acres	3.51
Lot Dimensions	irregular
Garage Stalls	3
School District	150
Taxes	\$7,035
Taxes with Assessments	\$7,060
Tax Year	2026

Additional Features:

Basement: Owner Access **Fuel:** Propane **Garage:** 3 **Heat:** Forced Air, In-Floor Heating **Sewer:** Private Sewer, Septic System Compliant - Yes **Water:** Private, Well **Air Conditioning:** Central Air

Driving Directions:

use directions to and driveway entrance at 8505 280th St S, Hawley, MN



Listed By:
eXp Realty (219 WF)

Affinity Real Estate Inc. participates in the Regional Multiple Listing Service of Minnesota, Inc Broker Reciprocity (sm) program, allowing us to display other broker's listings on our website. All properties are subject to prior sale, change or withdrawal.



Call Affinity Real Estate

218-237-3333

info@affinityrealestate.com



Affinity Real Estate - 600 Park Avenue South - Park Rapids MN 56470



website: www.AffinityRealEstate.com | email: info@affinityrealestate.com | office: 218-237-3333 | fax:218-237-3377



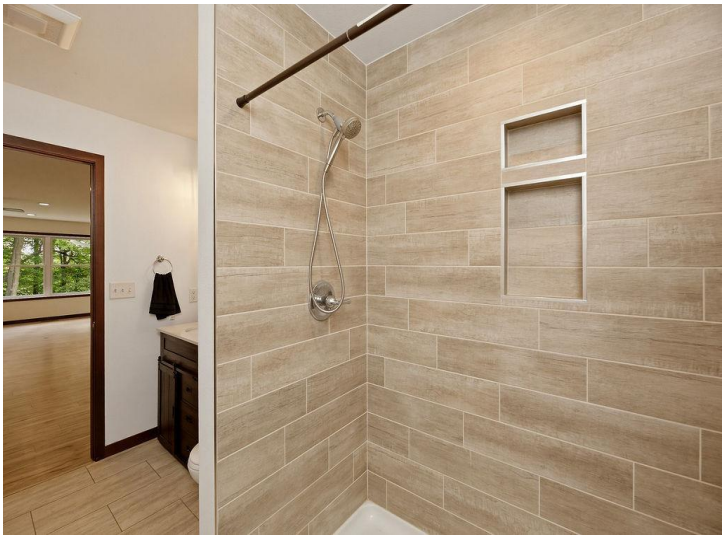
\$699,900
MLS 7093097 Lake Home
27884 86th Avenue
Hawley MN 56549



website: www.AffinityRealEstate.com | email: info@affinityrealestate.com | office: 218-237-3333 | fax:218-237-3377



\$699,900
MLS 7093097 Lake Home
27884 86th Avenue
Hawley MN 56549



website: www.AffinityRealEstate.com | email: info@affinityrealestate.com | office: 218-237-3333 | fax:218-237-3377



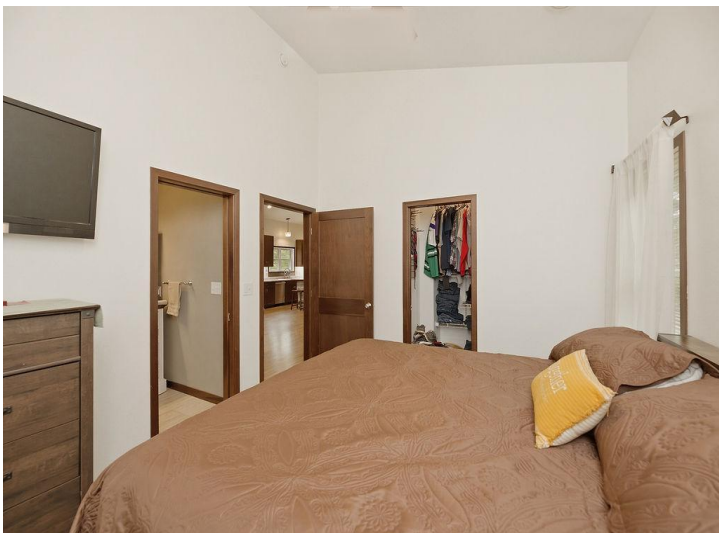
\$699,900
MLS 7093097 Lake Home
27884 86th Avenue
Hawley MN 56549



website: www.AffinityRealEstate.com | email: info@affinityrealestate.com | office: 218-237-3333 | fax:218-237-3377

Affinity
REAL ESTATE INC

\$699,900
MLS 7093097 Lake Home
27884 86th Avenue
Hawley MN 56549



website: www.AffinityRealEstate.com | email: info@affinityrealestate.com | office: 218-237-3333 | fax:218-237-3377

Affinity
REAL ESTATE INC

\$699,900
MLS 7093097 Lake Home
27884 86th Avenue
Hawley MN 56549



website: www.AffinityRealEstate.com | email: info@affinityrealestate.com | office: 218-237-3333 | fax:218-237-3377



\$699,900
MLS 7093097 Lake Home
27884 86th Avenue
Hawley MN 56549