



MLS 7093505 Commercial

\$495,000

14713 Clover Glen Drive
Little Falls MN 56345

Status: Active

Description:

Unique opportunity to own a versatile commercial and residential property all in one! The commercial space offers 2,690 square feet and has been recently remodeled, featuring six private offices, a spacious work area, receptionist area, large conference room, two bathrooms and a kitchen area. The attached residence is a multi-level split home with over 1,800+ finished square feet offering a 4+ bedrooms and 2 bathrooms. Additional features include three central A/C units, a 24x24 two-stall garage, and a spacious paved parking lot with ample room for employees, customers, or guests. Whether you're looking to operate your business on-site, generate rental income, or expand your portfolio, this property offers endless possibilities and outstanding value. A great investment opportunity with commercial and residential flexibility!

Additional Details:

Year Built	1969
Lot Acres	0.68
Lot Dimensions	179x99x170x152
Garage Stalls	2
School District	482
Taxes	\$5,036
Taxes with Assessments	\$5,076
Tax Year	2026

Additional Features:

Basement: Block, Daylight/Lookout Windows, Partial, Unfinished **Fuel:** Electric, Natural Gas **Garage:** 2 **Heat:** Boiler **Sewer:** Private Sewer
Water: Well **Air Conditioning:** Central Air, Wall Unit(s)

Driving Directions:

From 27 E of Little Falls. Sign in Yard. Second entrance is on Cloverglenn Lane.



Listed By:
Edina Realty, Inc.

Affinity Real Estate Inc. participates in the Regional Multiple Listing Service of Minnesota, Inc Broker Reciprocity (sm) program, allowing us to display other broker's listings on our website. All properties are subject to prior sale, change or withdrawal.



Call Affinity Real Estate

218-237-3333

info@affinityrealestate.com



Affinity Real Estate - 600 Park Avenue South - Park Rapids MN 56470



website: www.AffinityRealEstate.com | email: info@affinityrealestate.com | office: 218-237-3333 | fax:218-237-3377



\$495,000
MLS 7093505 Commercial
14713 Clover Glen Drive
Little Falls MN 56345



website: www.AffinityRealEstate.com | email: info@affinityrealestate.com | office: 218-237-3333 | fax:218-237-3377



\$495,000
MLS 7093505 Commercial
14713 Clover Glen Drive
Little Falls MN 56345



website: www.AffinityRealEstate.com | email: info@affinityrealestate.com | office: 218-237-3333 | fax: 218-237-3377

Affinity
REAL ESTATE INC

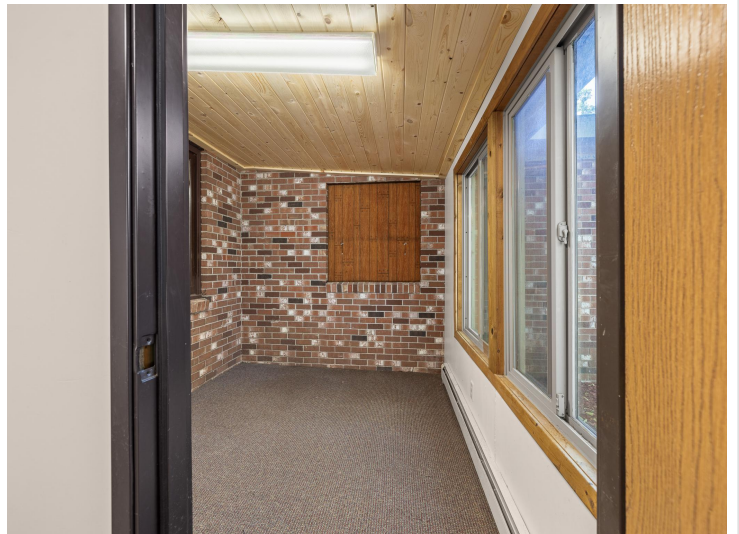
\$495,000
MLS 7093505 Commercial
14713 Clover Glen Drive
Little Falls MN 56345



website: www.AffinityRealEstate.com | email: info@affinityrealestate.com | office: 218-237-3333 | fax: 218-237-3377



\$495,000
MLS 7093505 Commercial
14713 Clover Glen Drive
Little Falls MN 56345



website: www.AffinityRealEstate.com | email: info@affinityrealestate.com | office: 218-237-3333 | fax:218-237-3377



\$495,000
MLS 7093505 Commercial
14713 Clover Glen Drive
Little Falls MN 56345



website: www.AffinityRealEstate.com | email: info@affinityrealestate.com | office: 218-237-3333 | fax:218-237-3377

Affinity
REAL ESTATE INC

\$495,000
MLS 7093505 Commercial
14713 Clover Glen Drive
Little Falls MN 56345



website: www.AffinityRealEstate.com | email: info@affinityrealestate.com | office: 218-237-3333 | fax: 218-237-3377



\$495,000
MLS 7093505 Commercial
14713 Clover Glen Drive
Little Falls MN 56345



website: www.AffinityRealEstate.com | email: info@affinityrealestate.com | office: 218-237-3333 | fax:218-237-3377



\$495,000
MLS 7093505 Commercial
14713 Clover Glen Drive
Little Falls MN 56345