



MLS 7093543 Lake Land

**\$200,000**

**Description:**

This beautiful open floor plan park model sits on a large back row lot, comes fully furnished and includes a boat slip, golf cart, storage shed, and a spacious 12 x 30 garage. You'll love all the natural light of living space surrounded by windows, lots of good kitchen cabinet space, vaulted ceilings, upgrades and two separate loft sleeping areas. You'll be in ah by the spacious patio and bonfire pit area backing up to the woods with lots of privacy in the back row and good parking. The park offers a wide range of amenities such as a pickleball, tennis, basketball and volleyball courts, outdoor heated swimming pool, swimming beach, private boat landing, storm shelter, fish cleaning house, onsite laundry, horseshoe pits, playground, shower house, wood shop, car/boat wash station and many memories. The beautiful Whitefish Chain is just steps away. It's the perfect place for those who enjoy outdoor activities and a vibrant community. Don't miss this incredible opportunity.

**Additional Details:**

School District	186
Taxes	\$220
Taxes with Assessments	\$220
Tax Year	2026

**Additional Features:**

**Driving Directions:**

From Crosslake N on 66 to Right on Daggett Pine to Left on Wilderness Trail to lot #137



Listed By:  
Dane Arthur Real Estate Agency-Crosslake

Affinity Real Estate Inc. participates in the Regional Multiple Listing Service of Minnesota, Inc Broker Reciprocity (sm) program, allowing us to display other broker's listings on our website. All properties are subject to prior sale, change or withdrawal.



**Call Affinity Real Estate**

**218-237-3333**

**info@affinityrealestate.com**



**Affinity Real Estate - 600 Park Avenue South - Park Rapids MN 56470**



website: [www.AffinityRealEstate.com](http://www.AffinityRealEstate.com) | email: [info@affinityrealestate.com](mailto:info@affinityrealestate.com) | office: 218-237-3333 | fax:218-237-3377



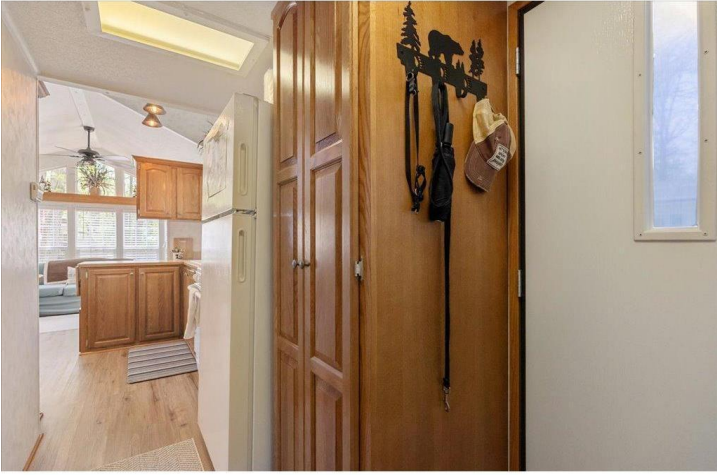
**\$200,000**  
MLS 7093543 Lake Land  
15827 Wilderness Trail Unit  
137  
Crosslake MN 56442



website: [www.AffinityRealEstate.com](http://www.AffinityRealEstate.com) | email: [info@affinityrealestate.com](mailto:info@affinityrealestate.com) | office: 218-237-3333 | fax:218-237-3377



**\$200,000**  
MLS 7093543 Lake Land  
15827 Wilderness Trail Unit  
137  
Crosslake MN 56442



website: [www.AffinityRealEstate.com](http://www.AffinityRealEstate.com) | email: [info@affinityrealestate.com](mailto:info@affinityrealestate.com) | office: 218-237-3333 | fax:218-237-3377



**\$200,000**  
MLS 7093543 Lake Land  
15827 Wilderness Trail Unit  
137  
Crosslake MN 56442



website: [www.AffinityRealEstate.com](http://www.AffinityRealEstate.com) | email: [info@affinityrealestate.com](mailto:info@affinityrealestate.com) | office: 218-237-3333 | fax:218-237-3377

**Affinity**  
REAL ESTATE INC

**\$200,000**  
MLS 7093543 Lake Land  
15827 Wilderness Trail Unit  
137  
Crosslake MN 56442



website: [www.AffinityRealEstate.com](http://www.AffinityRealEstate.com) | email: [info@affinityrealestate.com](mailto:info@affinityrealestate.com) | office: 218-237-3333 | fax:218-237-3377



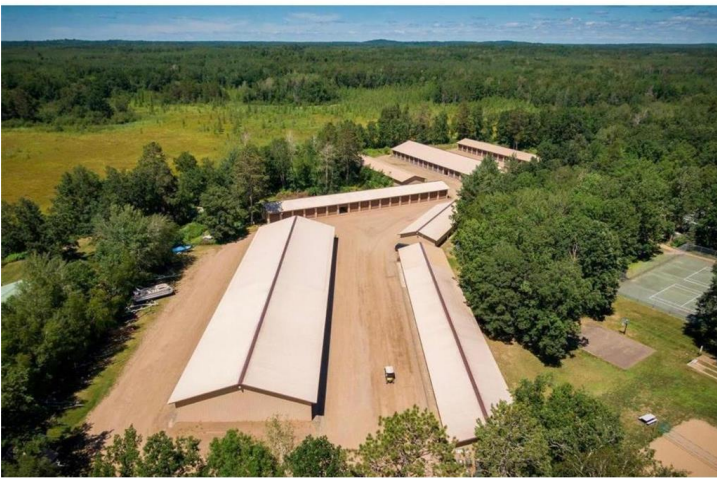
**\$200,000**  
MLS 7093543 Lake Land  
15827 Wilderness Trail Unit  
137  
Crosslake MN 56442



website: [www.AffinityRealEstate.com](http://www.AffinityRealEstate.com) | email: [info@affinityrealestate.com](mailto:info@affinityrealestate.com) | office: 218-237-3333 | fax:218-237-3377



**\$200,000**  
MLS 7093543 Lake Land  
15827 Wilderness Trail Unit  
137  
Crosslake MN 56442



website: [www.AffinityRealEstate.com](http://www.AffinityRealEstate.com) | email: [info@affinityrealestate.com](mailto:info@affinityrealestate.com) | office: 218-237-3333 | fax: 218-237-3377



**\$200,000**  
 MLS 7093543 Lake Land  
 15827 Wilderness Trail Unit  
 137  
 Crosslake MN 56442



website: [www.AffinityRealEstate.com](http://www.AffinityRealEstate.com) | email: [info@affinityrealestate.com](mailto:info@affinityrealestate.com) | office: 218-237-3333 | fax:218-237-3377



**\$200,000**  
MLS 7093543 Lake Land  
15827 Wilderness Trail Unit  
137  
Crosslake MN 56442