



MLS 7093557 Lake Land

\$139,000

Description:

Escape to your own place on the Whitefish Chain with this charming one-bedroom unit tucked into the second row of Wilderness Park on Little Pine Lake. This is where summer days are spent on the water, evenings wind down by the lake, and everything you need is right within reach. Enjoy access to the entire Whitefish Chain, known for its clear water, great fishing, and lakeside restaurants. Whether you're out boating for the day or heading in for dinner by water, this location puts you in the middle of it all. The property includes your own dock, a 12 x 30 garage for storage, and access to a fish cleaning house. Community amenities are designed for easy lake living, including tennis and pickleball courts, volleyball, horseshoes, a private boat landing, boat wash, shower house, storm shelter, and laundry facilities. Simple, comfortable, and ready to enjoy, this is an easy way to step into lake life and make the most of the season.

Additional Details:

School District	186
Taxes	\$160
Taxes with Assessments	\$160
Tax Year	2024

Additional Features:

Driving Directions:

From County Road 66 in Crosslake go East on Daggett Pine Rd go past the Community Center, go left on Wilderness Trail, take to end and enter Wilderness Park. Take your 1st right in the park, left at the water to home on left.



Listed By:
Dane Arthur Real Estate Agency-Crosslake

Affinity Real Estate Inc. participates in the Regional Multiple Listing Service of Minnesota, Inc Broker Reciprocity (sm) program, allowing us to display other broker's listings on our website. All properties are subject to prior sale, change or withdrawal.



Call Affinity Real Estate

218-237-3333

info@affinityrealestate.com



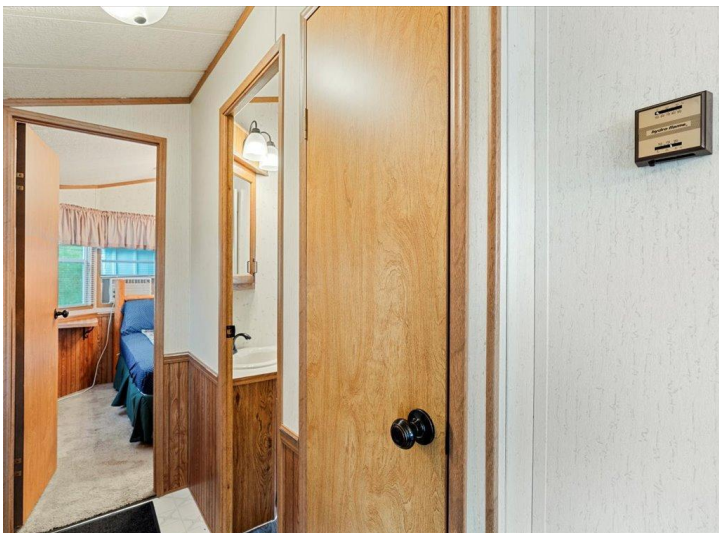
Affinity Real Estate - 600 Park Avenue South - Park Rapids MN 56470



website: www.AffinityRealEstate.com | email: info@affinityrealestate.com | office: 218-237-3333 | fax: 218-237-3377

Affinity
REAL ESTATE INC

\$139,000
MLS 7093557 Lake Land
15827 Wilderness Trail Unit
28
Crosslake MN 56442



website: www.AffinityRealEstate.com | email: info@affinityrealestate.com | office: 218-237-3333 | fax:218-237-3377

Affinity
REAL ESTATE INC

\$139,000
MLS 7093557 Lake Land
15827 Wilderness Trail Unit
28
Crosslake MN 56442



website: www.AffinityRealEstate.com | email: info@affinityrealestate.com | office: 218-237-3333 | fax: 218-237-3377

Affinity
REAL ESTATE INC

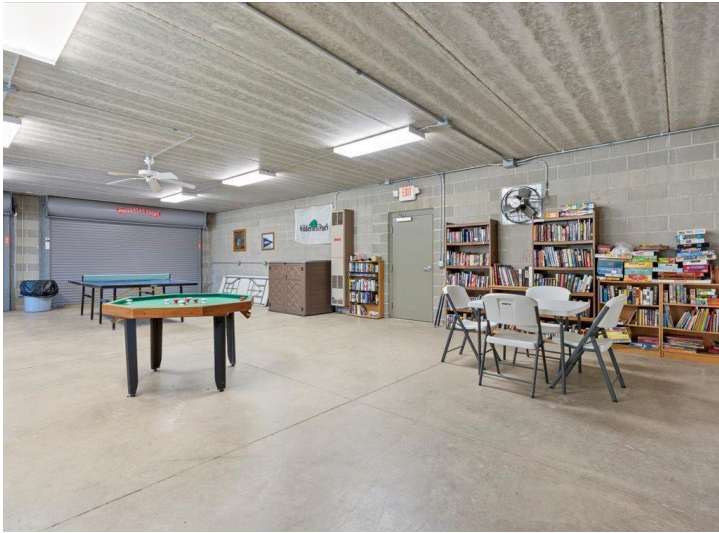
\$139,000
MLS 7093557 Lake Land
15827 Wilderness Trail Unit
28
Crosslake MN 56442



website: www.AffinityRealEstate.com | email: info@affinityrealestate.com | office: 218-237-3333 | fax:218-237-3377



\$139,000
MLS 7093557 Lake Land
15827 Wilderness Trail Unit
28
Crosslake MN 56442



website: www.AffinityRealEstate.com | email: info@affinityrealestate.com | office: 218-237-3333 | fax:218-237-3377

Affinity
REAL ESTATE INC

\$139,000
MLS 7093557 Lake Land
15827 Wilderness Trail Unit
28
Crosslake MN 56442



website: www.AffinityRealEstate.com | email: info@affinityrealestate.com | office: 218-237-3333 | fax:218-237-3377



\$139,000
MLS 7093557 Lake Land
15827 Wilderness Trail Unit
28
Crosslake MN 56442