



MLS 7093607 Residential

\$369,900

1,414 sq ft
3 bedrooms
1 baths

10047 County Road 8
Brainerd MN 56401

Status: Active

Description:

Country living with room to grow! Set on 20 scenic acres, this property offers the space and flexibility you've been looking for. The home features 3 bedrooms, 1 bathroom, and a practical layout with an unfinished lower level ready for your vision—providing the opportunity to significantly expand the living space. Outside, you'll find a barn, machine shop, and detached garage, offering plenty of room for hobbies, equipment, storage, or livestock. Whether you're looking for a hobby farm, a place to enjoy the outdoors, or simply extra elbow room, this property combines comfortable country living with valuable acreage and outbuildings in a beautiful rural setting.

Additional land available, schedule your showing today!

Additional Details:

Year Built	1969
Lot Acres	20
Lot Dimensions	660x660
Garage Stalls	6
School District	181
Taxes	\$1,010
Taxes with Assessments	\$1,025
Tax Year	2025

Additional Features:

Basement: Block, Egress Window(s), Full, Partially Finished **Fuel:** Propane **Garage:** 6 **Heat:** Forced Air **Sewer:** Tank with Drainage Field
Water: Drilled **Air Conditioning:** Central Air

Driving Directions:

Highway 18 East towards Garrison to Right on County Road 8 to property on Right



Listed By:
Aspen Real Estate Svcs, LLC

Affinity Real Estate Inc. participates in the Regional Multiple Listing Service of Minnesota, Inc Broker Reciprocity (sm) program, allowing us to display other broker's listings on our website. All properties are subject to prior sale, change or withdrawal.



Call Affinity Real Estate

218-237-3333

info@affinityrealestate.com



Affinity Real Estate - 600 Park Avenue South - Park Rapids MN 56470



website: www.AffinityRealEstate.com | email: info@affinityrealestate.com | office: 218-237-3333 | fax:218-237-3377



\$369,900
MLS 7093607 Residential
10047 County Road 8
Brainerd MN 56401



website: www.AffinityRealEstate.com | email: info@affinityrealestate.com | office: 218-237-3333 | fax:218-237-3377



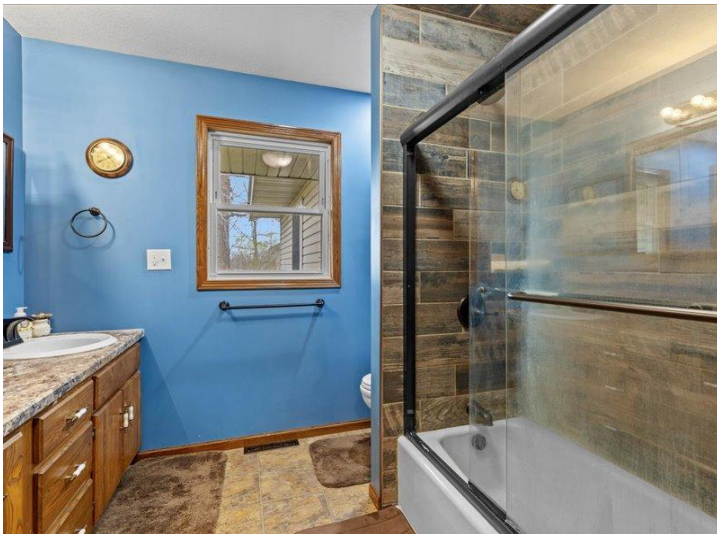
\$369,900
MLS 7093607 Residential
10047 County Road 8
Brainerd MN 56401



website: www.AffinityRealEstate.com | email: info@affinityrealestate.com | office: 218-237-3333 | fax: 218-237-3377

Affinity
REAL ESTATE INC

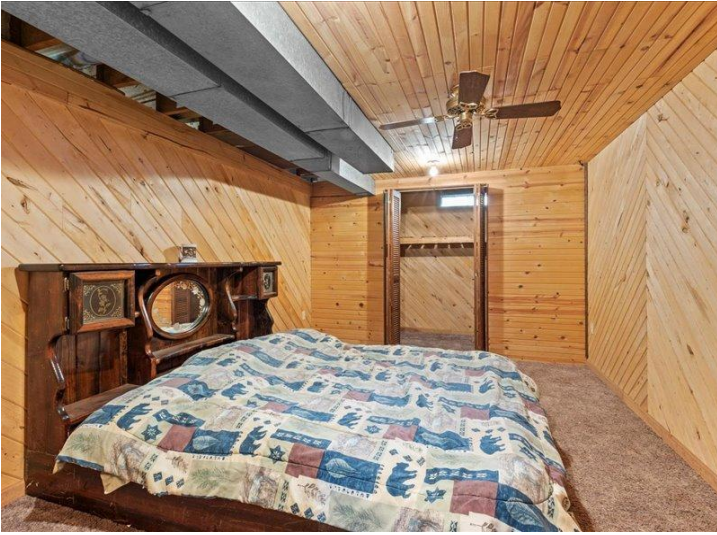
\$369,900
MLS 7093607 Residential
10047 County Road 8
Brainerd MN 56401



website: www.AffinityRealEstate.com | email: info@affinityrealestate.com | office: 218-237-3333 | fax:218-237-3377



\$369,900
MLS 7093607 Residential
10047 County Road 8
Brainerd MN 56401



website: www.AffinityRealEstate.com | email: info@affinityrealestate.com | office: 218-237-3333 | fax:218-237-3377



\$369,900
MLS 7093607 Residential
10047 County Road 8
Brainerd MN 56401



website: www.AffinityRealEstate.com | email: info@affinityrealestate.com | office: 218-237-3333 | fax:218-237-3377



\$369,900
MLS 7093607 Residential
10047 County Road 8
Brainerd MN 56401