



MLS 7093613 Lake Home

\$399,900

2,160 sq ft
3 bedrooms
2 baths

6630 County Road 11
Alexandria MN 56308

Waterfront: Carlos

Status: Active

Description:

Looking for that coveted privacy while still being only minutes from the convenience of town? This home just might be the one for you! Nestled on 4.66 acres with many mature trees, a beautiful yard to spread out on, and patios and decks galore to soak up the sun, this property boasts many of the caveats of country living while still being within 10 minutes of Alexandria. Ready to enjoy those hot summer days? Enjoy the lake life with 30 feet of deeded access on Lake Carlos. Located on the coveted Alexandria lakes region Chain of Lakes, this is sure to be a summer hotspot! Take advantage of the notable pride and care that has been poured into this home with the updated windows, steel siding, and nova brick to finish the outside. You will also find that there has been just as much thought put into the enjoyment of the inside of this lovely home. With many features that are sure to draw your interest, the extensive storage located throughout, a beautiful Silestone shower, and a new furnace installed within the past two years are sure to top the list of must-haves for any prospective homebuyer! A property like this does not come along often; set up your showing to make it yours today!

Buyer of home retains the right of first refusal to purchase the 100x45 Morton shed on the adjacent lot owned by the seller. Morton shed not part of this listing, but can be purchased separately.

Additional Details:

Year Built	1971
Lot Acres	4.66
Lot Dimensions	300x686x300x682
Garage Stalls	2
School District	206
Taxes	\$1,880
Taxes with Assessments	\$1,880
Tax Year	2026

Additional Features:

Fuel: Natural Gas **Heat:** Forced Air

Driving Directions:

From 3rd and Broadway, continue straight to N Nokomis. Turn left, onto N Nokomis NE. In 2.8 miles, turn right onto N Nokomis NE. In 2.1 miles, property is located on your left.



Call Affinity Real Estate

218-237-3333

info@affinityrealestate.com



Affinity Real Estate - 600 Park Avenue South - Park Rapids MN 56470



website: www.AffinityRealEstate.com | email: info@affinityrealestate.com | office: 218-237-3333 | fax:218-237-3377



\$399,900
MLS 7093613 Lake Home
6630 County Road 11
Alexandria MN 56308



website: www.AffinityRealEstate.com | email: info@affinityrealestate.com | office: 218-237-3333 | fax:218-237-3377

Affinity
REAL ESTATE INC

\$399,900
MLS 7093613 Lake Home
6630 County Road 11
Alexandria MN 56308



website: www.AffinityRealEstate.com | email: info@affinityrealestate.com | office: 218-237-3333 | fax:218-237-3377

Affinity
REAL ESTATE INC

\$399,900
MLS 7093613 Lake Home
6630 County Road 11
Alexandria MN 56308



website: www.AffinityRealEstate.com | email: info@affinityrealestate.com | office: 218-237-3333 | fax: 218-237-3377

Affinity
REAL ESTATE INC

\$399,900
MLS 7093613 Lake Home
6630 County Road 11
Alexandria MN 56308



website: www.AffinityRealEstate.com | email: info@affinityrealestate.com | office: 218-237-3333 | fax: 218-237-3377

Affinity
REAL ESTATE INC

\$399,900
MLS 7093613 Lake Home
6630 County Road 11
Alexandria MN 56308



website: www.AffinityRealEstate.com | email: info@affinityrealestate.com | office: 218-237-3333 | fax:218-237-3377

Affinity
REAL ESTATE INC

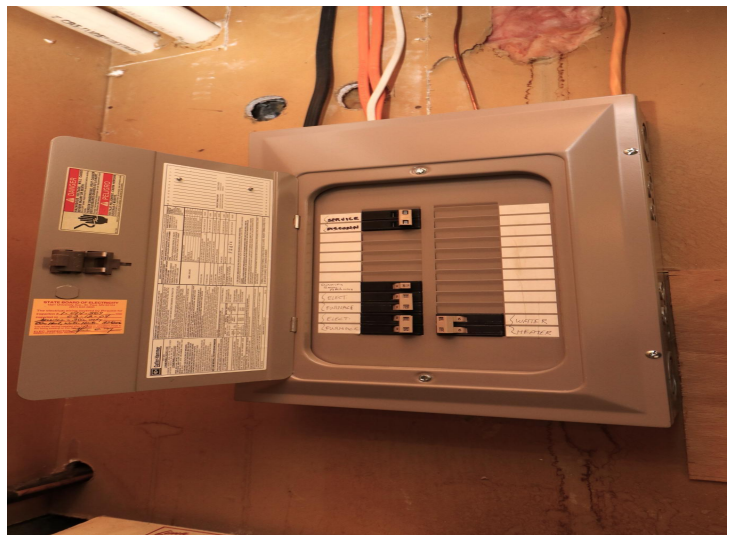
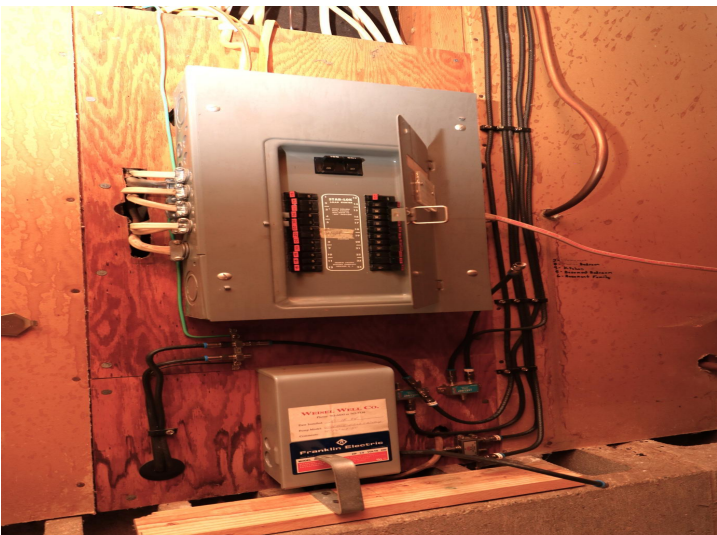
\$399,900
MLS 7093613 Lake Home
6630 County Road 11
Alexandria MN 56308



website: www.AffinityRealEstate.com | email: info@affinityrealestate.com | office: 218-237-3333 | fax:218-237-3377

Affinity
REAL ESTATE INC

\$399,900
MLS 7093613 Lake Home
6630 County Road 11
Alexandria MN 56308



website: www.AffinityRealEstate.com | email: info@affinityrealestate.com | office: 218-237-3333 | fax:218-237-3377

Affinity
REAL ESTATE INC

\$399,900
MLS 7093613 Lake Home
6630 County Road 11
Alexandria MN 56308



website: www.AffinityRealEstate.com | email: info@affinityrealestate.com | office: 218-237-3333 | fax:218-237-3377



\$399,900
MLS 7093613 Lake Home
6630 County Road 11
Alexandria MN 56308



website: www.AffinityRealEstate.com | email: info@affinityrealestate.com | office: 218-237-3333 | fax:218-237-3377



\$399,900
MLS 7093613 Lake Home
6630 County Road 11
Alexandria MN 56308