



MLS 7094042 Residential

\$624,900

2,304 sq ft
3 bedrooms
2 baths

6740 Saint Mathias Road
Brainerd MN 56401

Status: Coming Soon

Description:

Set on more than 22 acres, this custom-built 2,300+ square foot home showcases quality craftsmanship and warm, inviting finishes throughout, including rich hardwood floors, ceramic tile, tongue-and-groove vaulted ceilings, and six-panel doors. The spacious single-level floor plan flows effortlessly, featuring comfortable living areas and a well-appointed kitchen with ample storage. Large windows fill the home with natural light and frame picturesque views of the surrounding countryside from nearly every room. In the cooler months, gather around the cozy gas fireplace and enjoy the warmth and ambiance it brings to the living room. Step outside and enjoy the covered patio, an ideal spot for morning coffee, outdoor dining, or relaxing summer evenings. The insulated 24x30 attached garage offers everyday convenience, while the impressive 40x60 heated detached garage provides exceptional space for hobbies, equipment, vehicles, a workshop, or additional storage. So come enjoy country living at its finest, all while staying connected with fiber optic internet and being just minutes from the shopping, dining, and entertainment the Brainerd Lakes Area has to offer.

Additional Details:


Year Built	2002
Lot Acres	22.02
Lot Dimensions	728x1313
Garage Stalls	4
School District	181
Taxes	\$3,298
Taxes with Assessments	\$3,298
Tax Year	2026

Additional Features:

Basement: None **Fuel:** Propane **Garage:** 4 **Heat:** Forced Air **Sewer:** Mound Septic, Private Sewer, Septic System Compliant - Yes **Water:** Drilled, Private, Well **Air Conditioning:** Central Air

Driving Directions:

From Brainerd South on Old Hwy 371 to South on Saint Mathias Rd/ Cty Rd 21 4 miles to property on East side of Road

 Listed By:
eXp Realty

Affinity Real Estate Inc. participates in the Regional Multiple Listing Service of Minnesota, Inc Broker Reciprocity (sm) program, allowing us to display other broker's listings on our website. All properties are subject to prior sale, change or withdrawal.

 **Call Affinity Real Estate**
218-237-3333
info@affinityrealestate.com

Affinity Real Estate - 600 Park Avenue South - Park Rapids MN 56470



website: www.AffinityRealEstate.com | email: info@affinityrealestate.com | office: 218-237-3333 | fax: 218-237-3377

Affinity
REAL ESTATE INC

\$624,900
MLS 7094042 Residential
6740 Saint Mathias Road
Brainerd MN 56401



website: www.AffinityRealEstate.com | email: info@affinityrealestate.com | office: 218-237-3333 | fax:218-237-3377

Affinity
REAL ESTATE INC

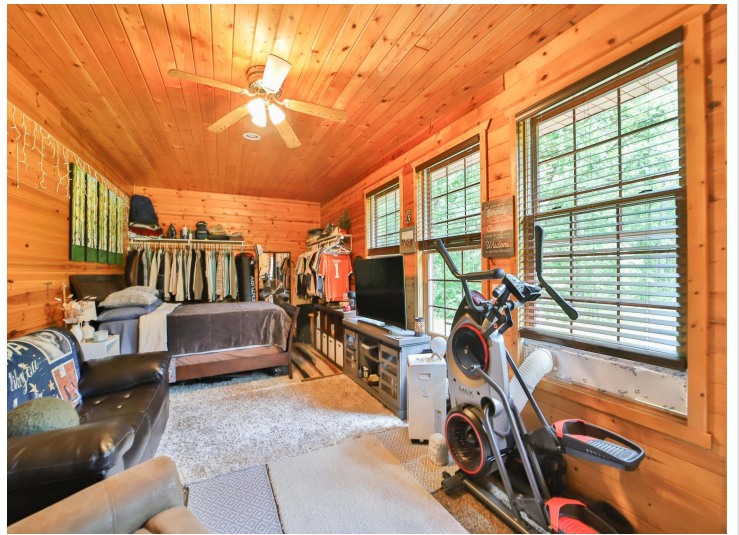
\$624,900
MLS 7094042 Residential
6740 Saint Mathias Road
Brainerd MN 56401



website: www.AffinityRealEstate.com | email: info@affinityrealestate.com | office: 218-237-3333 | fax:218-237-3377

Affinity
REAL ESTATE INC

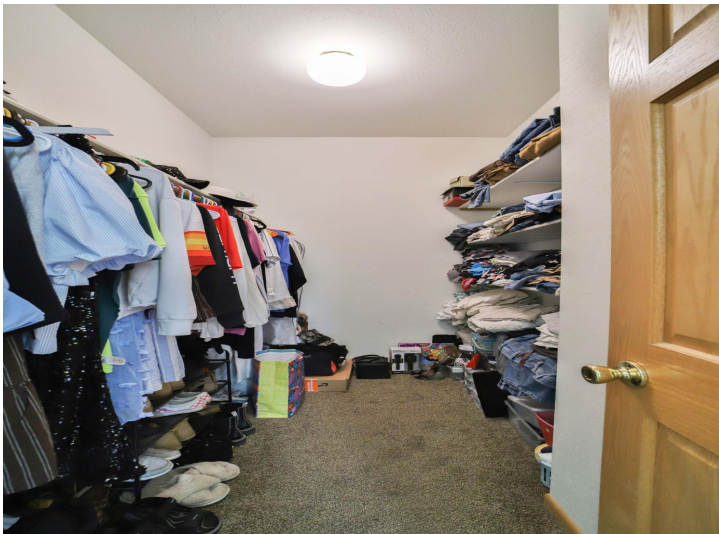
\$624,900
MLS 7094042 Residential
6740 Saint Mathias Road
Brainerd MN 56401



website: www.AffinityRealEstate.com | email: info@affinityrealestate.com | office: 218-237-3333 | fax: 218-237-3377



\$624,900
MLS 7094042 Residential
6740 Saint Mathias Road
Brainerd MN 56401



website: www.AffinityRealEstate.com | email: info@affinityrealestate.com | office: 218-237-3333 | fax: 218-237-3377

Affinity
REAL ESTATE INC

\$624,900
MLS 7094042 Residential
6740 Saint Mathias Road
Brainerd MN 56401



website: www.AffinityRealEstate.com | email: info@affinityrealestate.com | office: 218-237-3333 | fax:218-237-3377

Affinity
REAL ESTATE INC

\$624,900
MLS 7094042 Residential
6740 Saint Mathias Road
Brainerd MN 56401



website: www.AffinityRealEstate.com | email: info@affinityrealestate.com | office: 218-237-3333 | fax:218-237-3377



\$624,900
MLS 7094042 Residential
6740 Saint Mathias Road
Brainerd MN 56401



website: www.AffinityRealEstate.com | email: info@affinityrealestate.com | office: 218-237-3333 | fax: 218-237-3377

Affinity
REAL ESTATE INC

\$624,900
MLS 7094042 Residential
6740 Saint Mathias Road
Brainerd MN 56401



website: www.AffinityRealEstate.com | email: info@affinityrealestate.com | office: 218-237-3333 | fax:218-237-3377

Affinity
REAL ESTATE INC

\$624,900
MLS 7094042 Residential
6740 Saint Mathias Road
Brainerd MN 56401