



MLS 7094165 Residential

\$349,999

863 sq ft
2 bedrooms
2 baths

33532 State Hwy 46
Deer River MN 56636

Status: Active

Description:

Escape to the peace and privacy of country living with this charming 2-bedroom, 2-bathroom home situated on 38.6 picturesque acres in Deer River. Surrounded by open green space and natural beauty, this property offers endless opportunities for recreation, hobby farming, hunting, or simply enjoying the outdoors. The home features a functional layout with comfortable living spaces and an unfinished basement ready for your future expansion ideas, storage, or workshop space. Outside, you'll find a detached garage and a barn, providing ample room for vehicles, equipment, animals, or hobbies. Whether you're looking for a private retreat, a recreational property, or a place to create your dream rural lifestyle, this unique acreage offers the space and flexibility to make it your own.

Additional Details:

Year Built	1970
Lot Acres	38.6
Garage Stalls	3
School District	317
Taxes	\$1,280
Taxes with Assessments	(unreported)
Tax Year	2025

Additional Features:

Basement: Block, Unfinished **Fuel:** Propane **Garage:** 3 **Heat:** Forced Air **Sewer:** Mound Septic, Septic System Compliant - Yes **Water:** Drilled, Well **Air Conditioning:** Central Air

Driving Directions:

From Grand Rapids, US Hwy 2 W to R on Hwy 46 to property on R.



Listed By:
Pemberton RE

Affinity Real Estate Inc. participates in the Regional Multiple Listing Service of Minnesota, Inc Broker Reciprocity (sm) program, allowing us to display other broker's listings on our website. All properties are subject to prior sale, change or withdrawal.



Call Affinity Real Estate

218-237-3333

info@affinityrealestate.com



Affinity Real Estate - 600 Park Avenue South - Park Rapids MN 56470



website: www.AffinityRealEstate.com | email: info@affinityrealestate.com | office: 218-237-3333 | fax:218-237-3377



\$349,999
MLS 7094165 Residential
33532 State Hwy 46
Deer River MN 56636



website: www.AffinityRealEstate.com | email: info@affinityrealestate.com | office: 218-237-3333 | fax:218-237-3377



\$349,999
MLS 7094165 Residential
33532 State Hwy 46
Deer River MN 56636



website: www.AffinityRealEstate.com | email: info@affinityrealestate.com | office: 218-237-3333 | fax:218-237-3377

Affinity
REAL ESTATE INC

\$349,999
MLS 7094165 Residential
33532 State Hwy 46
Deer River MN 56636



website: www.AffinityRealEstate.com | email: info@affinityrealestate.com | office: 218-237-3333 | fax:218-237-3377



\$349,999
MLS 7094165 Residential
33532 State Hwy 46
Deer River MN 56636



website: www.AffinityRealEstate.com | email: info@affinityrealestate.com | office: 218-237-3333 | fax: 218-237-3377

Affinity
REAL ESTATE INC

\$349,999
MLS 7094165 Residential
33532 State Hwy 46
Deer River MN 56636



website: www.AffinityRealEstate.com | email: info@affinityrealestate.com | office: 218-237-3333 | fax:218-237-3377



\$349,999
MLS 7094165 Residential
33532 State Hwy 46
Deer River MN 56636



website: www.AffinityRealEstate.com | email: info@affinityrealestate.com | office: 218-237-3333 | fax: 218-237-3377

Affinity
REAL ESTATE INC

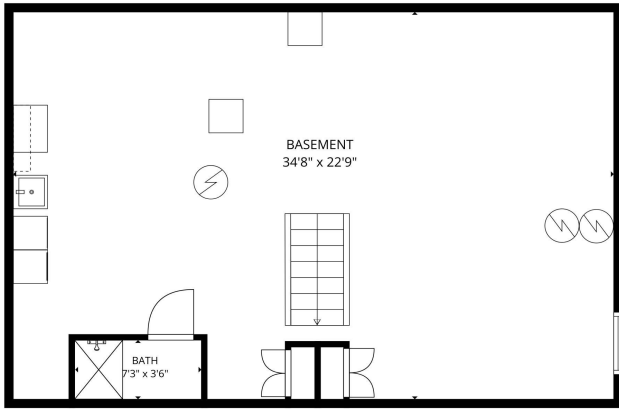
\$349,999
MLS 7094165 Residential
33532 State Hwy 46
Deer River MN 56636



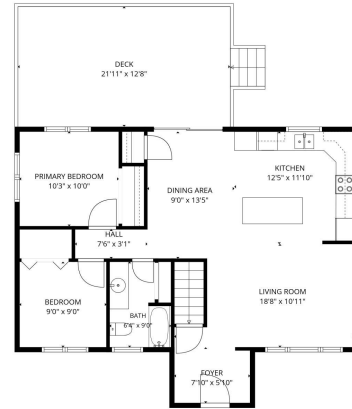
website: www.AffinityRealEstate.com | email: info@affinityrealestate.com | office: 218-237-3333 | fax:218-237-3377



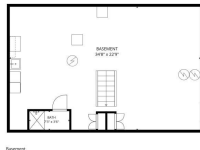
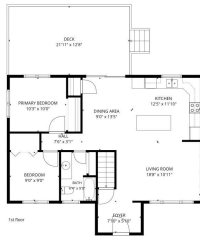
\$349,999
MLS 7094165 Residential
33532 State Hwy 46
Deer River MN 56636



TOTAL: 863 sq. ft
 Basement: 30 sq. ft, 1st floor: 833 sq. ft
 EXCLUDED AREAS: BASEMENT: 757 sq. ft, DECK: 278 sq. ft, WALLS: 121 sq. ft
FLOOR PLANS CREATED BY CIRCULAR AP. MEASUREMENTS DERIVED FROM AERIAL PHOTO. NOT GUARANTEED.



TOTAL: 863 sq. ft
 Basement: 30 sq. ft, 1st floor: 833 sq. ft
 EXCLUDED AREAS: BASEMENT: 757 sq. ft, DECK: 278 sq. ft, WALLS: 121 sq. ft
FLOOR PLANS CREATED BY CIRCULAR AP. MEASUREMENTS DERIVED FROM AERIAL PHOTO. NOT GUARANTEED.



TOTAL: 863 sq. ft
 Basement: 30 sq. ft, 1st floor: 833 sq. ft
 EXCLUDED AREAS: BASEMENT: 757 sq. ft, DECK: 278 sq. ft, WALLS: 121 sq. ft
FLOOR PLANS CREATED BY CIRCULAR AP. MEASUREMENTS DERIVED FROM AERIAL PHOTO. NOT GUARANTEED.

website: www.AffinityRealEstate.com | email: info@affinityrealestate.com | office: 218-237-3333 | fax: 218-237-3377



\$349,999
 MLS 7094165 Residential
 33532 State Hwy 46
 Deer River MN 56636