



MLS 7094207 Residential

\$419,900

1,900 sq ft
4 bedrooms
2 baths

4647 County Road 121
Fort Ripley MN 56449

Status: Coming Soon

Description:

Escape to the tranquility of country living with this beautifully updated 4-bedroom, 2-bath home situated on 1.4 acres of scenic countryside. Surrounded by open fields and peaceful views, this move-in-ready property combines modern amenities with the charm of a rural setting. Adding to its appeal are both an attached garage for everyday convenience and a detached garage offering additional storage, workshop space, or room for recreational vehicles and equipment. Inside, you'll find a bright and inviting floor plan featuring a completely remodeled kitchen with custom cabinetry, stainless steel appliances, and a spacious center island that serves as the perfect gathering place for family and friends. New flooring, fresh paint, updated bathrooms, and a new furnace provide comfort and peace of mind throughout the home.

The thoughtfully designed layout offers generous living space for every stage of life, including a cozy lower-level family room for movies and entertaining and an upper level sunroom that creates the perfect retreat to enjoy morning coffee, a good book, or views of the surrounding countryside.

Additional Details:


Year Built	1977
Lot Acres	1.4
Lot Dimensions	150x400x150x370
Garage Stalls	4
School District	181
Taxes	\$760
Taxes with Assessments	\$760
Tax Year	2025

Additional Features:

Basement: Block, Daylight/Lookout Windows, Egress Window(s), Finished **Fuel:** Propane **Garage:** 4 **Heat:** Forced Air **Sewer:** Mound Septic, Private Sewer, Septic System Compliant - Yes **Water:** Drilled **Air Conditioning:** Central Air

Driving Directions:

From Brainerd, go south on Old 371 S, to left on Sleepy Hollow Rd, to right on County 121 to property on right.

 Listed By:
Century 21 Brainerd Realty

Affinity Real Estate Inc. participates in the Regional Multiple Listing Service of Minnesota, Inc Broker Reciprocity (sm) program, allowing us to display other broker's listings on our website. All properties are subject to prior sale, change or withdrawal.



Call Affinity Real Estate
218-237-3333
info@affinityrealestate.com



Affinity Real Estate - 600 Park Avenue South - Park Rapids MN 56470



website: www.AffinityRealEstate.com | email: info@affinityrealestate.com | office: 218-237-3333 | fax: 218-237-3377

Affinity
REAL ESTATE INC

\$419,900
MLS 7094207 Residential
4647 County Road 121
Fort Ripley MN 56449



website: www.AffinityRealEstate.com | email: info@affinityrealestate.com | office: 218-237-3333 | fax: 218-237-3377

Affinity
REAL ESTATE INC

\$419,900
MLS 7094207 Residential
4647 County Road 121
Fort Ripley MN 56449



website: www.AffinityRealEstate.com | email: info@affinityrealestate.com | office: 218-237-3333 | fax:218-237-3377



\$419,900
MLS 7094207 Residential
4647 County Road 121
Fort Ripley MN 56449



website: www.AffinityRealEstate.com | email: info@affinityrealestate.com | office: 218-237-3333 | fax:218-237-3377



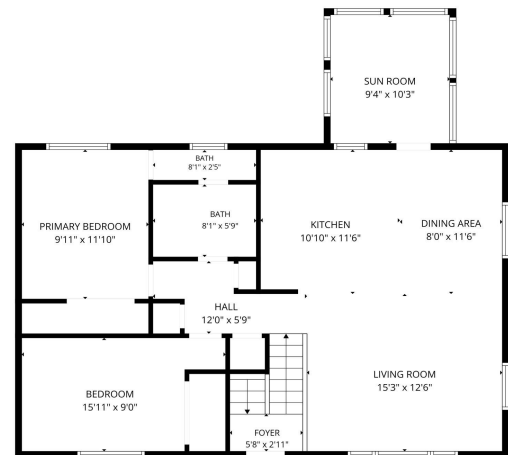
\$419,900
MLS 7094207 Residential
4647 County Road 121
Fort Ripley MN 56449



website: www.AffinityRealEstate.com | email: info@affinityrealestate.com | office: 218-237-3333 | fax:218-237-3377

Affinity
REAL ESTATE INC

\$419,900
MLS 7094207 Residential
4647 County Road 121
Fort Ripley MN 56449

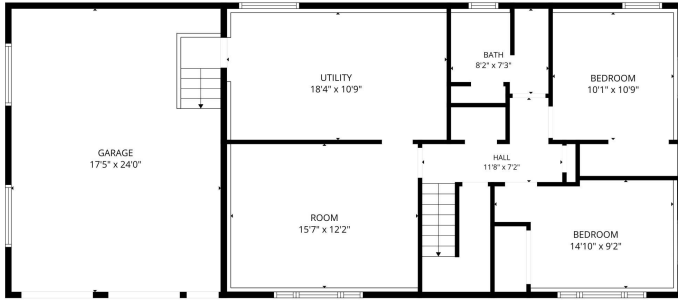


FLOOR PLAN CREATED BY CUBICASA APP. MEASUREMENTS DEEMED HIGHLY RELIABLE BUT NOT GUARANTEED.

website: www.AffinityRealEstate.com | email: info@affinityrealestate.com | office: 218-237-3333 | fax: 218-237-3377



\$419,900
 MLS 7094207 Residential
 4647 County Road 121
 Fort Ripley MN 56449



website: www.AffinityRealEstate.com | email: info@affinityrealestate.com | office: 218-237-3333 | fax:218-237-3377



\$419,900
MLS 7094207 Residential
4647 County Road 121
Fort Ripley MN 56449