



MLS 7094580 Residential

\$425,000

1,800 sq ft
3 bedrooms
2 baths

34437 County 18
Cushing MN 56443

Status: Coming Soon

Description:

Dreaming of a private country retreat? This 55 Acre wooded property is tucked into a mix of mature trees including Maples plus a pond on the edge of the property. Features an extra covered shed, 2 car garage, garden shed, and 2 story home with 3 bedrooms, 2 bathrooms, main floor laundry, front porch and mud room, back sun room flex room off the updated kitchen with lots of storage & full basement for extra storage! Roof new in 2018 & 2025, 4 mini splits & heat pumps & many extras to enjoy! Photos used are over the years - professional photos coming soon!

Additional Details:

Year Built	1985
Lot Acres	55
Lot Dimensions	Multiple
Garage Stalls	2
School District	787
Taxes	\$3,180
Taxes with Assessments	\$3,180
Tax Year	2026

Additional Features:

Basement: Block, Full, Unfinished **Fuel:** Electric, Propane, Wood **Garage:** 2 **Heat:** Ductless Mini-Split, Forced Air, Outdoor Boiler **Sewer:** Private Sewer, Tank with Drainage Field **Water:** Private, Well **Air Conditioning:** Ductless Mini-Split, Heat Pump

Driving Directions:

Hwy 10 North of Cushing to West on #18 follow to home on Left before big S curve. Long driveway.



Listed By:
Central MN Realty LLC

Affinity Real Estate Inc. participates in the Regional Multiple Listing Service of Minnesota, Inc Broker Reciprocity (sm) program, allowing us to display other broker's listings on our website. All properties are subject to prior sale, change or withdrawal.



Call Affinity Real Estate

218-237-3333

info@affinityrealestate.com



Affinity Real Estate - 600 Park Avenue South - Park Rapids MN 56470



website: www.AffinityRealEstate.com | email: info@affinityrealestate.com | office: 218-237-3333 | fax:218-237-3377



\$425,000
MLS 7094580 Residential
34437 County 18
Cushing MN 56443



website: www.AffinityRealEstate.com | email: info@affinityrealestate.com | office: 218-237-3333 | fax:218-237-3377

Affinity
REAL ESTATE INC

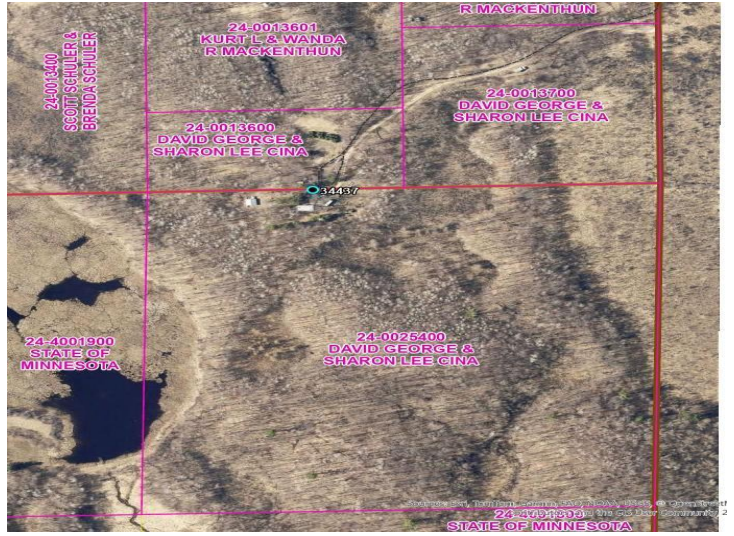
\$425,000
MLS 7094580 Residential
34437 County 18
Cushing MN 56443



website: www.AffinityRealEstate.com | email: info@affinityrealestate.com | office: 218-237-3333 | fax:218-237-3377

Affinity
REAL ESTATE INC

\$425,000
MLS 7094580 Residential
34437 County 18
Cushing MN 56443



website: www.AffinityRealEstate.com | email: info@affinityrealestate.com | office: 218-237-3333 | fax:218-237-3377



\$425,000
MLS 7094580 Residential
34437 County 18
Cushing MN 56443