



MLS 7094749 Residential

**\$144,500**

812 sq ft  
2 bedrooms  
1 baths

515 Snell Avenue  
Pine River MN 56474

Status: Active

**Description:**

Charming and affordable 2-bedroom, 1-bath home conveniently located in town! This cozy property offers comfortable one-level living with a bright and inviting interior that's ready for you to make your own. Enjoy a functional floor plan with spacious living areas, plenty of natural light and a welcoming atmosphere throughout. Outside, you'll find a detached garage providing extra storage and protection from the elements, along with a manageable yard perfect for relaxing, gardening or entertaining. Situated close to local shops, restaurants, schools and community amenities, this home combines small-town convenience with everyday comfort. Whether you're a first-time homebuyer, looking to downsize or seeking an investment opportunity, this cute in-town home is full of potential. Don't miss your chance to make it yours!

**Additional Details:**

Year Built	1950
Lot Acres	0.26
Lot Dimensions	80'x132'
Garage Stalls	2
School District	2174
Taxes	\$1,072
Taxes with Assessments	\$1,158
Tax Year	2026

**Additional Features:**

**Basement:** Partial **Fuel:** Natural Gas **Garage:** 2 **Heat:** Forced Air **Sewer:** City Sewer/Connected **Water:** City Water/Connected **Air Conditioning:** Window Unit(s)

**Driving Directions:**

Stoptlights in Pine River, north on HWY 371, Right on Norway Avenue to # 515



Listed By:  
Heartland Real Estate

Affinity Real Estate Inc. participates in the Regional Multiple Listing Service of Minnesota, Inc Broker Reciprocity (sm) program, allowing us to display other broker's listings on our website. All properties are subject to prior sale, change or withdrawal.



Call Affinity Real Estate

**218-237-3333**

[info@affinityrealestate.com](mailto:info@affinityrealestate.com)



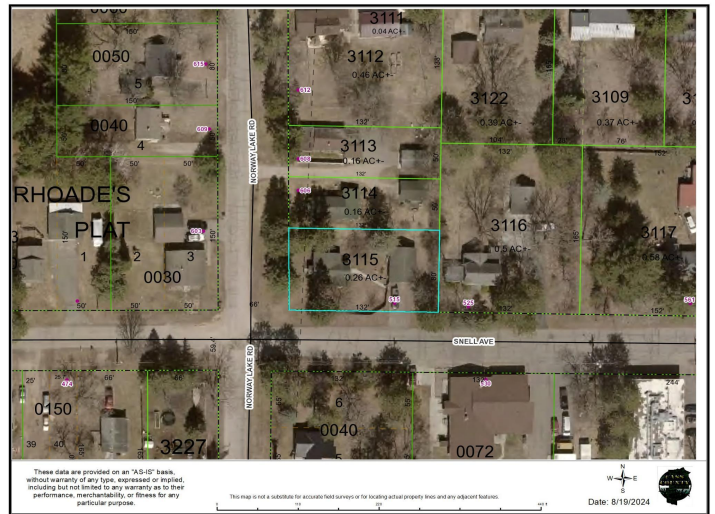
Affinity Real Estate - 600 Park Avenue South - Park Rapids MN 56470



website: [www.AffinityRealEstate.com](http://www.AffinityRealEstate.com) | email: [info@affinityrealestate.com](mailto:info@affinityrealestate.com) | office: 218-237-3333 | fax:218-237-3377



**\$144,500**  
MLS 7094749 Residential  
515 Snell Avenue  
Pine River MN 56474



website: [www.AffinityRealEstate.com](http://www.AffinityRealEstate.com) | email: [info@affinityrealestate.com](mailto:info@affinityrealestate.com) | office: 218-237-3333 | fax: 218-237-3377



**\$144,500**  
 MLS 7094749 Residential  
 515 Snell Avenue  
 Pine River MN 56474