



MLS 7094848 Commercial

**\$645,000**

12110 State Highway 210  
Brainerd MN 56401

Status: Active

**Description:**

Exceptional opportunity to acquire a turnkey bar and grill along the highly traveled Hwy 210 corridor in Brainerd. This prime location offers a unique opportunity for a new owner to either build on the existing concept or introduce their own vision for the business. Dunmire's Bar & Grill has built a strong local following and benefits from excellent visibility, easy access, and steady traffic counts. Conveniently positioned near the Brainerd Lakes Regional Airport, the property captures both local and visitor traffic year-round. Take advantage of this rare chance to own a recognizable area establishment with strong highway exposure, ample parking, and outstanding growth potential in one of Central Minnesota's most active commercial and recreational corridors.

**Additional Details:**

Year Built	1947
Lot Acres	1.43
Lot Dimensions	193.80' x 44.72' x 341.91' x 150.21' x 451.83' x 148.50'
School District	181
Taxes	\$3,524
Taxes with Assessments	\$3,524
Tax Year	2026

**Additional Features:**

**Fuel:** Electric, Natural Gas **Heat:** Baseboard, Forced Air, Heat Pump

**Driving Directions:**

From Hwy 210 (Washington Street) / Hwy 371 (S 6th Street) intersection in Brainerd - East on Washington Street/Hwy 210 approx. 3.5 miles to the property on the North



Listed By:  
Close-Converse Commercial Prop

Affinity Real Estate Inc. participates in the Regional Multiple Listing Service of Minnesota, Inc Broker Reciprocity (sm) program, allowing us to display other broker's listings on our website. All properties are subject to prior sale, change or withdrawal.



**Call Affinity Real Estate**

**218-237-3333**

**info@affinityrealestate.com**



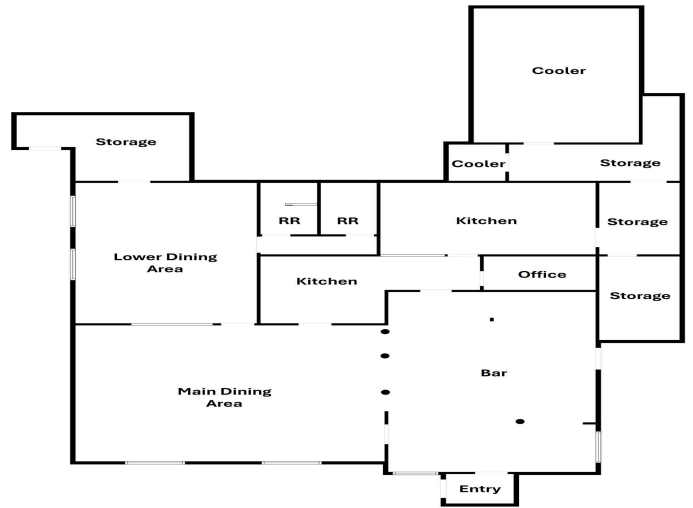
**Affinity Real Estate - 600 Park Avenue South - Park Rapids MN 56470**



website: [www.AffinityRealEstate.com](http://www.AffinityRealEstate.com) | email: [info@affinityrealestate.com](mailto:info@affinityrealestate.com) | office: 218-237-3333 | fax: 218-237-3377



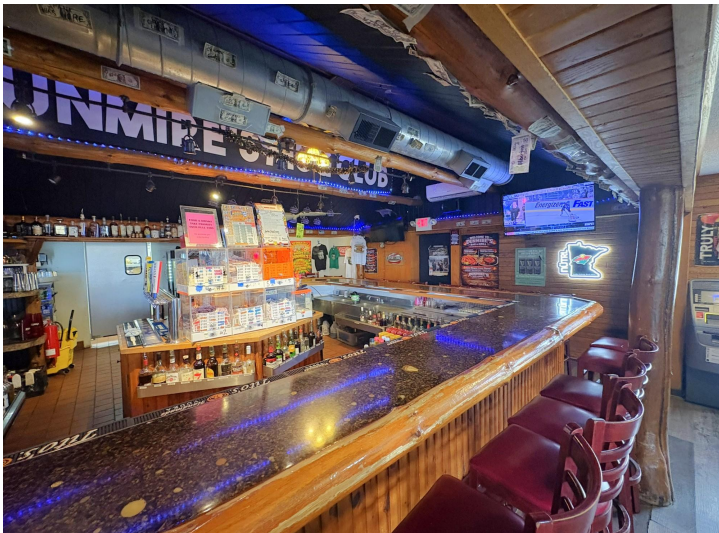
**\$645,000**  
 MLS 7094848 Commercial  
 12110 State Highway 210  
 Brainerd MN 56401



website: [www.AffinityRealEstate.com](http://www.AffinityRealEstate.com) | email: [info@affinityrealestate.com](mailto:info@affinityrealestate.com) | office: 218-237-3333 | fax: 218-237-3377



**\$645,000**  
 MLS 7094848 Commercial  
 12110 State Highway 210  
 Brainerd MN 56401



website: [www.AffinityRealEstate.com](http://www.AffinityRealEstate.com) | email: [info@affinityrealestate.com](mailto:info@affinityrealestate.com) | office: 218-237-3333 | fax: 218-237-3377

**Affinity**  
REAL ESTATE INC

**\$645,000**  
MLS 7094848 Commercial  
12110 State Highway 210  
Brainerd MN 56401



website: [www.AffinityRealEstate.com](http://www.AffinityRealEstate.com) | email: [info@affinityrealestate.com](mailto:info@affinityrealestate.com) | office: 218-237-3333 | fax: 218-237-3377



**\$645,000**  
MLS 7094848 Commercial  
12110 State Highway 210  
Brainerd MN 56401



website: [www.AffinityRealEstate.com](http://www.AffinityRealEstate.com) | email: [info@affinityrealestate.com](mailto:info@affinityrealestate.com) | office: 218-237-3333 | fax:218-237-3377



**\$645,000**  
MLS 7094848 Commercial  
12110 State Highway 210  
Brainerd MN 56401



website: [www.AffinityRealEstate.com](http://www.AffinityRealEstate.com) | email: [info@affinityrealestate.com](mailto:info@affinityrealestate.com) | office: 218-237-3333 | fax:218-237-3377



**\$645,000**  
MLS 7094848 Commercial  
12110 State Highway 210  
Brainerd MN 56401