



MLS 7094979 Residential

\$159,900

1,278 sq ft
3 bedrooms
1 baths

1318 Irving Street
Alexandria MN 56308

Status: Active

Description:

Opportunity. If you're looking for an investment, great starter home, or want something to tinker on and flip, check out this one and 3/4 story.

It offers charm with a blend in the 1950s contemporary deco with a dining room divider that is mid-century modern, my always favorite galley kitchen, which is a simple remodel, easy paint upgrade, add backsplash and voila'. Offering a main floor bedroom and full bath, some functional built-ins, updated flooring on the main, and two bedrooms upstairs, this home is built for functionality.

The basement is open, great for storage, utility room, and laundry.

The yard offer some outdoor space and a crafty cool garage, accented with real field stone. If you're looking for an investment property to add to your portfolio, want to buy your first house, want to buy a house for the kids to attend tech school, or looking to downsize this just might be your opportunity.

Additional Details:

Year Built	1955
Lot Acres	0.172
Lot Dimensions	50x150x50x150
Garage Stalls	1
School District	206
Taxes	\$1,506
Taxes with Assessments	\$1,506
Tax Year	2026

Additional Features:

Basement: Block, Full, Partially Finished **Fuel:** Natural Gas **Garage:** 1 **Heat:** Forced Air **Sewer:** City Sewer/Connected **Water:** City Water/Connected **Air Conditioning:** None

Driving Directions:

Start South on Broadway St. Take a left on 12th Ave E. Turn right on Irving St. Home will be on your right.



Listed By:
Real Estate by Jo, LLC

Affinity Real Estate Inc. participates in the Regional Multiple Listing Service of Minnesota, Inc Broker Reciprocity (sm) program, allowing us to display other broker's listings on our website. All properties are subject to prior sale, change or withdrawal.



Call Affinity Real Estate

218-237-3333

info@affinityrealestate.com



Affinity Real Estate - 600 Park Avenue South - Park Rapids MN 56470



website: www.AffinityRealEstate.com | email: info@affinityrealestate.com | office: 218-237-3333 | fax: 218-237-3377

Affinity
REAL ESTATE INC

\$159,900
MLS 7094979 Residential
1318 Irving Street
Alexandria MN 56308



website: www.AffinityRealEstate.com | email: info@affinityrealestate.com | office: 218-237-3333 | fax: 218-237-3377



\$159,900
MLS 7094979 Residential
1318 Irving Street
Alexandria MN 56308



website: www.AffinityRealEstate.com | email: info@affinityrealestate.com | office: 218-237-3333 | fax:218-237-3377



\$159,900
MLS 7094979 Residential
1318 Irving Street
Alexandria MN 56308



website: www.AffinityRealEstate.com | email: info@affinityrealestate.com | office: 218-237-3333 | fax:218-237-3377



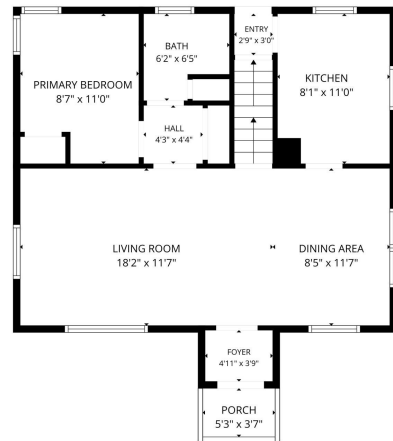
\$159,900
MLS 7094979 Residential
1318 Irving Street
Alexandria MN 56308



website: www.AffinityRealEstate.com | email: info@affinityrealestate.com | office: 218-237-3333 | fax: 218-237-3377

Affinity
REAL ESTATE INC

\$159,900
MLS 7094979 Residential
1318 Irving Street
Alexandria MN 56308

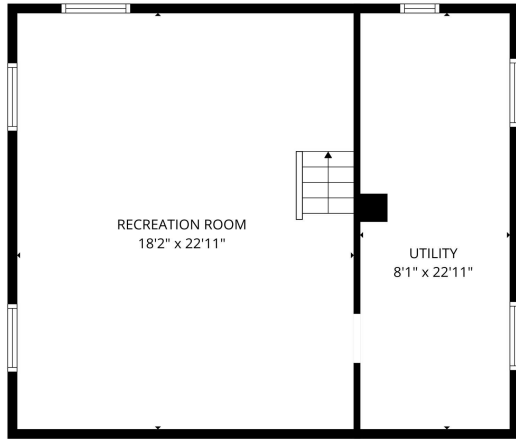


FLOOR PLAN CREATED BY CUBICARA APP. MEASUREMENTS DEEMED HIGHLY RELIABLE BUT NOT GUARANTEED.

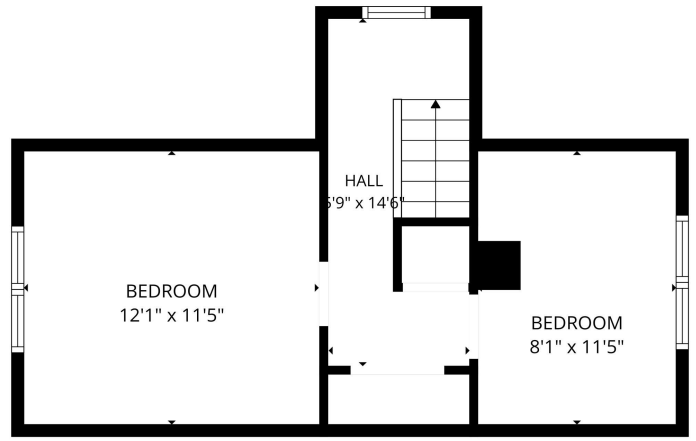
website: www.AffinityRealEstate.com | email: info@affinityrealestate.com | office: 218-237-3333 | fax: 218-237-3377



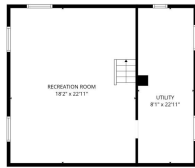
\$159,900
 MLS 7094979 Residential
 1318 Irving Street
 Alexandria MN 56308



FLOOR PLAN CREATED BY CUBICASA APP. MEASUREMENTS DEEMED HIGHLY RELIABLE BUT NOT GUARANTEED.



FLOOR PLAN CREATED BY CUBICASA APP. MEASUREMENTS DEEMED HIGHLY RELIABLE BUT NOT GUARANTEED.



FLOOR PLAN CREATED BY CUBICASA APP. MEASUREMENTS DEEMED HIGHLY RELIABLE BUT NOT GUARANTEED.

website: www.AffinityRealEstate.com | email: info@affinityrealestate.com | office: 218-237-3333 | fax: 218-237-3377



\$159,900
 MLS 7094979 Residential
 1318 Irving Street
 Alexandria MN 56308