



MLS 7095052 Residential

\$395,000

1,392 sq ft
3 bedrooms
2 baths

9087 Garden View Road
Nisswa MN 56468

Status: Coming Soon

Description:

This meticulously cared-for one-level home is situated on a private Nisswa setting in the heart of Lake Country and is nestled beneath a gorgeous canopy of mature trees on 2.53 acres of naturally landscaped, park-like grounds. Experience a perfect blend of comfort, convenience and privacy in this 3-bedroom, 2-bath home featuring an open inviting floor plan, a cozy living room with a gas fireplace-cathedral Knotty Pine ceilings, a bright and cheerful kitchen that flows seamlessly into an adjoining dining area, a spacious primary suite offering a private full bath and great closet space. Additional highlights include newer windows throughout, solid core 6-panel oak doors, in-floor heat, tile floors, an attached 2-stall insulated and sheet-rocked garage, a backyard patio, a fire pit and a fabulous 30x40 detached garage providing endless possibilities for storing all your toys, creating the ultimate workshop, pursuing hobbies or even operating a home-based business. Relax on the back patio while enjoying stunning storybook views along with an abundance of wildlife...all while you're just minutes from Nisswa...unlimited DNR Boat Landings, Championship Golf, shopping, bike trails and several dining options. An Exceptional Northwoods Setting!

Additional Details:

Year Built	2002
Lot Acres	110098
Lot Dimensions	315 x 515 x 267 x 374
Garage Stalls	5
School District	181
Taxes	\$1,606
Taxes with Assessments	\$1,606
Tax Year	2026

Additional Features:

Basement: None **Fuel:** Propane **Garage:** 5 **Heat:** Forced Air, In-Floor Heating **Sewer:** Mound Septic, Private Sewer **Water:** 4-Inch Submersible, Drilled, Private, Well **Air Conditioning:** Window Unit(s)

Driving Directions:

FROM NISSWA AT THE JCT OF 13 & 371 STOPLIGHTS, GO EAST ON 13 FOR 4.8 MILES TO, LEFT ON GARDEN VIEW RD. FOR 0.8 MILES TO SIGN & FIRE# 9087 ON LEFT.



Listed By:
Kurilla Real Estate LTD

Affinity Real Estate Inc. participates in the Regional Multiple Listing Service of Minnesota, Inc Broker Reciprocity (sm) program, allowing us to display other broker's listings on our website. All properties are subject to prior sale, change or withdrawal.



Call Affinity Real Estate

218-237-3333

info@affinityrealestate.com



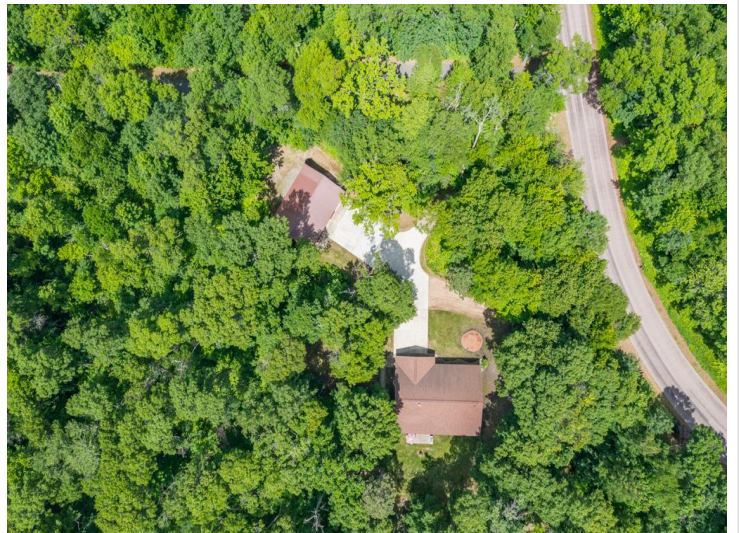
Affinity Real Estate - 600 Park Avenue South - Park Rapids MN 56470



website: www.AffinityRealEstate.com | email: info@affinityrealestate.com | office: 218-237-3333 | fax:218-237-3377

Affinity
REAL ESTATE INC

\$395,000
MLS 7095052 Residential
9087 Garden View Road
Nisswa MN 56468



website: www.AffinityRealEstate.com | email: info@affinityrealestate.com | office: 218-237-3333 | fax: 218-237-3377

Affinity
REAL ESTATE INC

\$395,000
MLS 7095052 Residential
9087 Garden View Road
Nisswa MN 56468



website: www.AffinityRealEstate.com | email: info@affinityrealestate.com | office: 218-237-3333 | fax:218-237-3377

Affinity
REAL ESTATE INC

\$395,000
MLS 7095052 Residential
9087 Garden View Road
Nisswa MN 56468



website: www.AffinityRealEstate.com | email: info@affinityrealestate.com | office: 218-237-3333 | fax: 218-237-3377

Affinity
REAL ESTATE INC

\$395,000
MLS 7095052 Residential
9087 Garden View Road
Nisswa MN 56468



website: www.AffinityRealEstate.com | email: info@affinityrealestate.com | office: 218-237-3333 | fax:218-237-3377



\$395,000
MLS 7095052 Residential
9087 Garden View Road
Nisswa MN 56468