



MLS 7095106 Lake Land

\$149,900

Description:

Here is your chance to get into one of Douglas Counties best lake associations, Big Horn Cove Association. Seasonal May 1st through September 30th. Lake view and only steps to the lake front. This RV is in great shape and comes fully equipped with all the amenities for a comfortable stay. Storage shed to store your toys and your lake and boat items. A prime lot makes this a see today buy today RV. Association has a cabin for rent for visitors on a first come first serve basis which is close to this unit. Call association for price per night. Metal roof upgrade at time of purchase. Fridge in small, shed stays. Large storage shed for boat storage contact association. Storm shelter is close to this unit also.

Additional Details:

Lot Acres	5.08
Lot Dimensions	1871 464 2073 885
School District	206
Taxes	\$396
Taxes with Assessments	\$396
Tax Year	2026

Additional Features:

Driving Directions:

From downtown Alexandria go northwest on MN 29 N towards County Rd 42 NW. Turn left on County Rd 34 NW and continue for approx. 4 miles. Turn left onto Big Horn Bay Rd NW and follow it to the address unit 10.



Listed By:
RE/MAX Results

Affinity Real Estate Inc. participates in the Regional Multiple Listing Service of Minnesota, Inc Broker Reciprocity (sm) program, allowing us to display other broker's listings on our website. All properties are subject to prior sale, change or withdrawal.



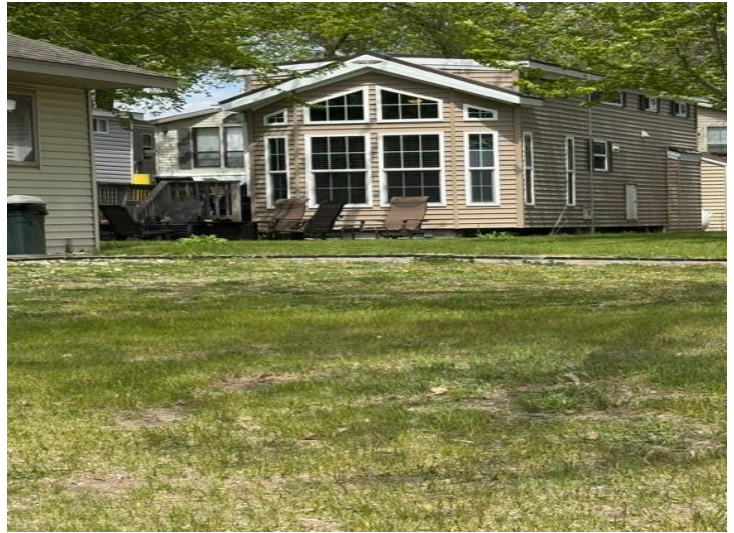
Call Affinity Real Estate

218-237-3333

info@affinityrealestate.com



Affinity Real Estate - 600 Park Avenue South - Park Rapids MN 56470



website: www.AffinityRealEstate.com | email: info@affinityrealestate.com | office: 218-237-3333 | fax:218-237-3377

Affinity
REAL ESTATE INC

\$149,900
MLS 7095106 Lake Land
2600 Big Horn Bay #10 Road
Alexandria MN 56308



website: www.AffinityRealEstate.com | email: info@affinityrealestate.com | office: 218-237-3333 | fax:218-237-3377

Affinity
REAL ESTATE INC

\$149,900
MLS 7095106 Lake Land
2600 Big Horn Bay #10 Road
Alexandria MN 56308



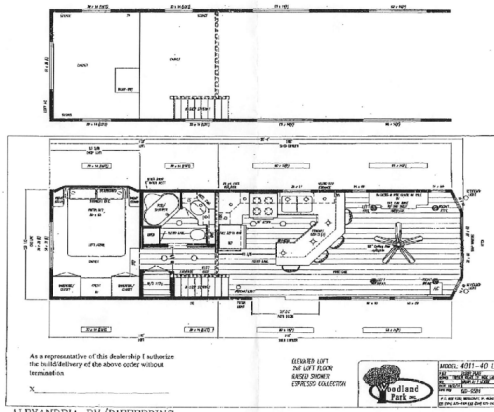
website: www.AffinityRealEstate.com | email: info@affinityrealestate.com | office: 218-237-3333 | fax:218-237-3377



\$149,900
MLS 7095106 Lake Land
2600 Big Horn Bay #10 Road
Alexandria MN 56308

06/1/04

10/17/2014 15:07 FAX 33053378



ALEXANDRIA RV/DIFFERDING

website: www.AffinityRealEstate.com | email: info@affinityrealestate.com | office: 218-237-3333 | fax:218-237-3377



\$149,900
 MLS 7095106 Lake Land
 2600 Big Horn Bay #10 Road
 Alexandria MN 56308