



MLS 7095276 Residential

\$440,000

3,848 sq ft
6 bedrooms
3 baths

27622 County 119
Nevis MN 56467

Status: Active

Description:

Just outside of Nevis on 5 private acres, this 6 bedroom, 3 bath home offers the space and setting that are hard to find. Tucked back from the road on a paved driveway, the property features a spacious yard with room to enjoy the outdoors while maintaining privacy. The main level welcomes you with vaulted wood ceilings and an open living, dining, and kitchen area centered around a large island and stainless steel appliances. Four bedrooms are located on the upper level, including a primary suite with a walk-in closet and private 3/4 bath, along with a full bath serving the additional bedrooms. The lower level features high ceilings, a large family room, two additional bedrooms, a 3/4 bath, and laundry room. Additional features include a forced air furnace, generator, attached tuck-under 2-stall garage, and a heated workshop garage complete with a bathroom and utility sink. As a bonus, the property also includes a tree house with power.

Additional Details:

Year Built	1996
Lot Acres	5
Lot Dimensions	665x390x665x390
Garage Stalls	3
School District	308
Taxes	\$2,508
Taxes with Assessments	\$2,508
Tax Year	2025

Additional Features:

Basement: Egress Window(s), Finished, Full, Walkout **Fuel:** Propane **Garage:** 3 **Heat:** Forced Air **Sewer:** Private Sewer, Tank with Drainage Field **Water:** Drilled, Well **Air Conditioning:** Central Air

Driving Directions:

From 33/119 intersection head south and continue for 2.5 miles. Property is on the left.



Listed By:
Keller Williams Realty Professionals

Affinity Real Estate Inc. participates in the Regional Multiple Listing Service of Minnesota, Inc Broker Reciprocity (sm) program, allowing us to display other broker's listings on our website. All properties are subject to prior sale, change or withdrawal.



Call Affinity Real Estate

218-237-3333

info@affinityrealestate.com



Affinity Real Estate - 600 Park Avenue South - Park Rapids MN 56470



website: www.AffinityRealEstate.com | email: info@affinityrealestate.com | office: 218-237-3333 | fax:218-237-3377

Affinity
REAL ESTATE INC

\$440,000
MLS 7095276 Residential
27622 County 119
Nevis MN 56467



website: www.AffinityRealEstate.com | email: info@affinityrealestate.com | office: 218-237-3333 | fax:218-237-3377



\$440,000
MLS 7095276 Residential
27622 County 119
Nevis MN 56467



website: www.AffinityRealEstate.com | email: info@affinityrealestate.com | office: 218-237-3333 | fax:218-237-3377

Affinity
REAL ESTATE INC

\$440,000
MLS 7095276 Residential
27622 County 119
Nevis MN 56467



website: www.AffinityRealEstate.com | email: info@affinityrealestate.com | office: 218-237-3333 | fax:218-237-3377



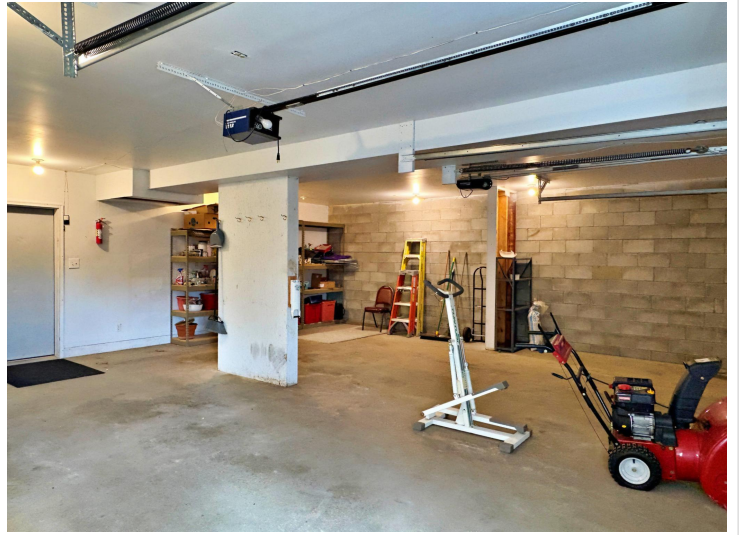
\$440,000
MLS 7095276 Residential
27622 County 119
Nevis MN 56467



website: www.AffinityRealEstate.com | email: info@affinityrealestate.com | office: 218-237-3333 | fax:218-237-3377



\$440,000
MLS 7095276 Residential
27622 County 119
Nevis MN 56467



website: www.AffinityRealEstate.com | email: info@affinityrealestate.com | office: 218-237-3333 | fax:218-237-3377



\$440,000
MLS 7095276 Residential
27622 County 119
Nevis MN 56467



website: www.AffinityRealEstate.com | email: info@affinityrealestate.com | office: 218-237-3333 | fax:218-237-3377



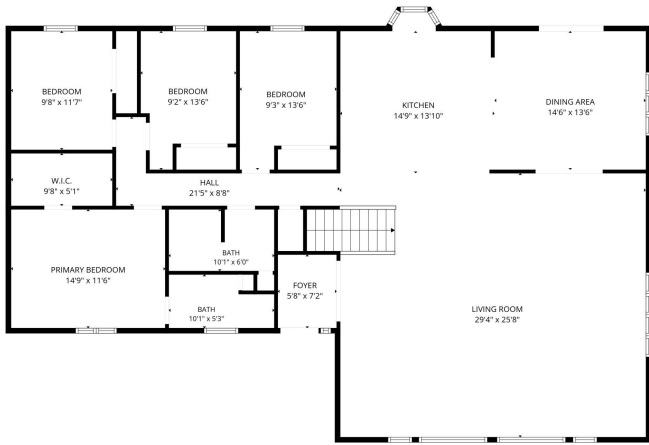
\$440,000
MLS 7095276 Residential
27622 County 119
Nevis MN 56467



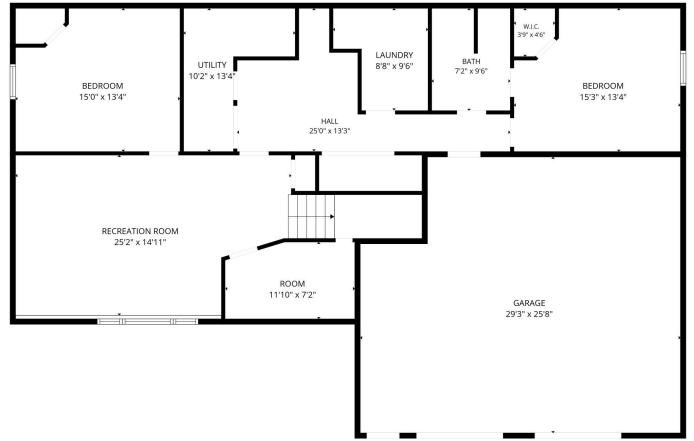
website: www.AffinityRealEstate.com | email: info@affinityrealestate.com | office: 218-237-3333 | fax:218-237-3377

Affinity
REAL ESTATE INC

\$440,000
MLS 7095276 Residential
27622 County 119
Nevis MN 56467



FLOOR PLAN CREATED BY CUBICASA APP. MEASUREMENTS DEEMED HIGHLY RELIABLE BUT NOT GUARANTEED.



FLOOR PLAN CREATED BY CUBICASA APP. MEASUREMENTS DEEMED HIGHLY RELIABLE BUT NOT GUARANTEED.

website: www.AffinityRealEstate.com | email: info@affinityrealestate.com | office: 218-237-3333 | fax: 218-237-3377



\$440,000
 MLS 7095276 Residential
 27622 County 119
 Nevis MN 56467