



MLS 7095336 Residential

\$299,900

0 sq ft
0 bedrooms
0 baths

30298 County 33
Akeley MN 56433

Status: Active

Description:

New home (2025) on 40 gorgeous acres. The heavy lifting is done. Bring your design dreams and custom finishes to life with this absolute gem in the woods. Includes 1600 sq ft (1200 main + 400 up), a 10x28 covered porch, and a spacious 28x32 attached garage. The crawlspace is wide open, providing easy access for HVAC and utilities. Features include vaulted ceilings, a picture perfect sunroom, an open loft (flex space), Thermo-Tech windows, underground electric, septic, and a drilled well. This home is clean, weather-tight and ready for its new owner. Flip a coin. It's perfect as either a primary residence or as the ultimate Up North escape. If you want total privacy in a wildlife-rich area, look no further. Prime location on a blacktop road just a few minutes from Nevis or Akeley. Be sure to check out the video.

Additional Details:

Year Built	2025
Lot Acres	40
Lot Dimensions	1320 x 1320
Garage Stalls	2
School District	113
Taxes	\$925
Taxes with Assessments	\$1,170
Tax Year	2026

Additional Features:

Basement: Crawl Space **Fuel:** Other **Garage:** 2 **Heat:** None **Sewer:** Mound Septic, Private Sewer, Septic System Compliant - Yes **Water:** Drilled, Private, Well **Air Conditioning:** None

Driving Directions:

From Nevis (CR 33 @ CR13): Go East on CR 33 5 Miles to property on left.



Listed By:
Affinity Real Estate Inc.

Affinity Real Estate Inc. participates in the Regional Multiple Listing Service of Minnesota, Inc Broker Reciprocity (sm) program, allowing us to display other broker's listings on our website. All properties are subject to prior sale, change or withdrawal.



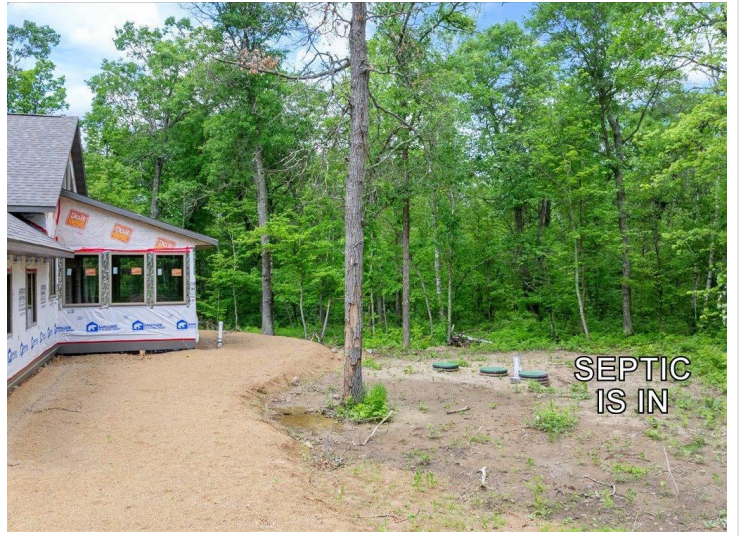
Call Affinity Real Estate

218-237-3333

info@affinityrealestate.com



Affinity Real Estate - 600 Park Avenue South - Park Rapids MN 56470



website: www.AffinityRealEstate.com | email: info@affinityrealestate.com | office: 218-237-3333 | fax:218-237-3377



\$299,900
MLS 7095336 Residential
30298 County 33
Akeley MN 56433



website: www.AffinityRealEstate.com | email: info@affinityrealestate.com | office: 218-237-3333 | fax: 218-237-3377

Affinity
REAL ESTATE INC

\$299,900
MLS 7095336 Residential
30298 County 33
Akeley MN 56433



website: www.AffinityRealEstate.com | email: info@affinityrealestate.com | office: 218-237-3333 | fax: 218-237-3377

Affinity
REAL ESTATE INC

\$299,900
MLS 7095336 Residential
30298 County 33
Akeley MN 56433



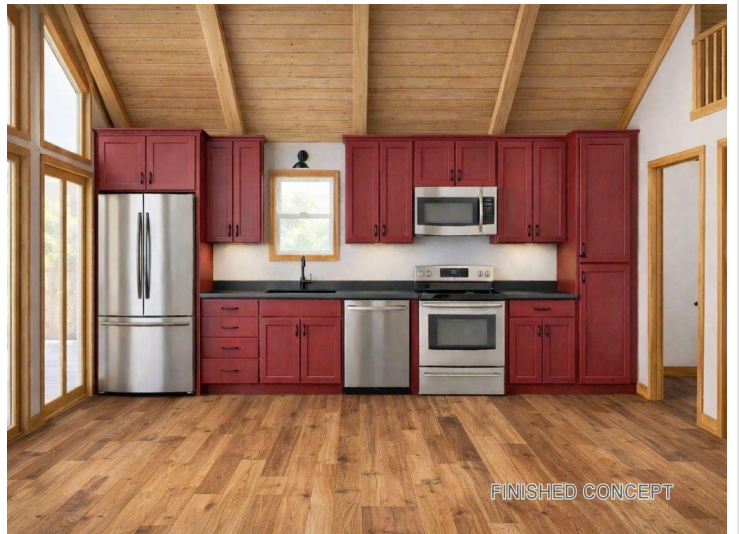
website: www.AffinityRealEstate.com | email: info@affinityrealestate.com | office: 218-237-3333 | fax:218-237-3377



\$299,900
MLS 7095336 Residential
30298 County 33
Akeley MN 56433



FINISHED CONCEPT



FINISHED CONCEPT



MOUND

SEPTIC IS IN

website: www.AffinityRealEstate.com | email: info@affinityrealestate.com | office: 218-237-3333 | fax:218-237-3377



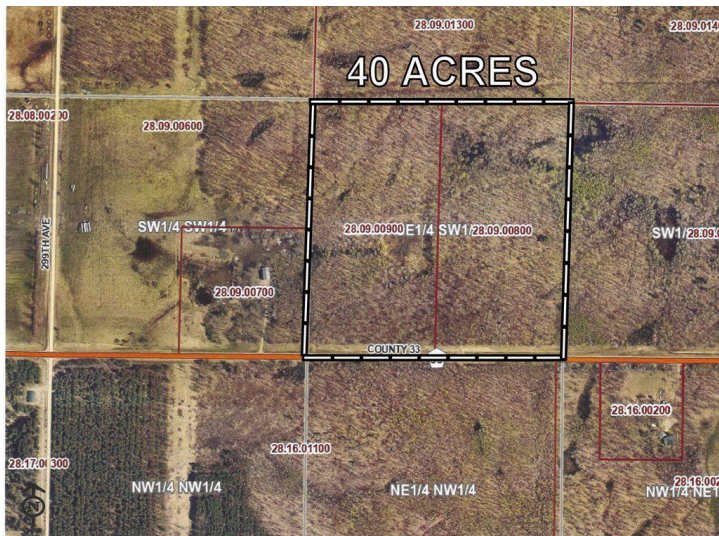
\$299,900
MLS 7095336 Residential
30298 County 33
Akeley MN 56433



website: www.AffinityRealEstate.com | email: info@affinityrealestate.com | office: 218-237-3333 | fax: 218-237-3377

Affinity
REAL ESTATE INC

\$299,900
MLS 7095336 Residential
30298 County 33
Akeley MN 56433



website: www.AffinityRealEstate.com | email: info@affinityrealestate.com | office: 218-237-3333 | fax: 218-237-3377



\$299,900
MLS 7095336 Residential
30298 County 33
Akeley MN 56433