



MLS 7095479 Commercial

\$750,000

418 Jefferson Street
Wadena MN 56482

Status: Active

Description:

For Sale: Multi-Use Commercial Building with Endless Potential!

Step into a piece of history with this incredible multi-use commercial building, formerly the Wesley Hospital. Brimming with character and opportunity, this versatile property offers a unique canvas to bring your vision to life.

With its expansive layout and multiple rooms, the possibilities are truly endless. Whether you're dreaming of multi-family housing, office spaces, or a creative mixed-use development, this building is ready to transform into your ideal space.

Features include:

Parking: On site parking with approximately 63 parking spaces and 3 handicap spaces.

Multiple Rooms: Ideal for a variety of layouts and configurations.

Laundry Facilities: Convenient for residential or commercial use.


Attached Garages: Perfect for secure parking or additional storage.

Elevator Access: Ensuring accessibility throughout the building.

This property is your opportunity to reimagine a landmark and create something truly special. Whether you're looking to invest, develop, or establish a legacy, the potential here is unmatched. Don't wait to make your vision a reality—schedule a showing today and explore the possibilities!

Additional Details:

Year Built	1923
Lot Acres	2.061
Lot Dimensions	300x300
Garage Stalls	3
School District	2155
Taxes	\$60
Taxes with Assessments	\$60
Tax Year	2024

 Listed By:
Hinkle Realty

Fuel: Natural Gas, Garage: 3, Heat: Boiler, Sewer: City Sewer/Connected, Water: City Water/Connected, Air Conditioning: Ductless Mini-Split

Driving Directions: Service of Minnesota, Inc Broker Reciprocity (sm) program, allowing us to display other broker's listings on our website. All properties are for information only and do not have a contract on file. Property is on your right.



Call Affinity Real Estate

218-237-3333

info@affinityrealestate.com



Affinity Real Estate - 600 Park Avenue South - Park Rapids MN 56470



website: www.AffinityRealEstate.com | email: info@affinityrealestate.com | office: 218-237-3333 | fax:218-237-3377

Affinity
REAL ESTATE INC

\$750,000
MLS 7095479 Commercial
418 Jefferson Street
Wadena MN 56482



website: www.AffinityRealEstate.com | email: info@affinityrealestate.com | office: 218-237-3333 | fax:218-237-3377

Affinity
REAL ESTATE INC

\$750,000
MLS 7095479 Commercial
418 Jefferson Street
Wadena MN 56482



website: www.AffinityRealEstate.com | email: info@affinityrealestate.com | office: 218-237-3333 | fax: 218-237-3377

Affinity
REAL ESTATE INC

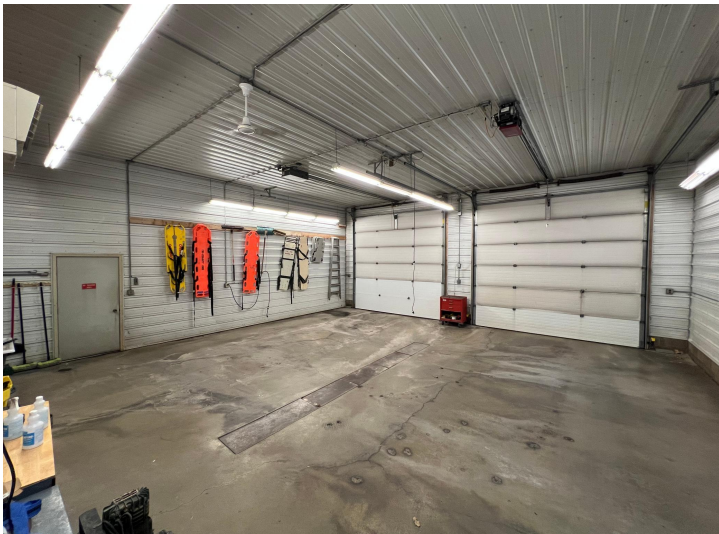
\$750,000
MLS 7095479 Commercial
418 Jefferson Street
Wadena MN 56482



website: www.AffinityRealEstate.com | email: info@affinityrealestate.com | office: 218-237-3333 | fax:218-237-3377

Affinity
REAL ESTATE INC

\$750,000
MLS 7095479 Commercial
418 Jefferson Street
Wadena MN 56482



website: www.AffinityRealEstate.com | email: info@affinityrealestate.com | office: 218-237-3333 | fax: 218-237-3377

Affinity
REAL ESTATE INC

\$750,000
MLS 7095479 Commercial
418 Jefferson Street
Wadena MN 56482



website: www.AffinityRealEstate.com | email: info@affinityrealestate.com | office: 218-237-3333 | fax:218-237-3377

Affinity
REAL ESTATE INC

\$750,000
MLS 7095479 Commercial
418 Jefferson Street
Wadena MN 56482



website: www.AffinityRealEstate.com | email: info@affinityrealestate.com | office: 218-237-3333 | fax:218-237-3377



\$750,000
MLS 7095479 Commercial
418 Jefferson Street
Wadena MN 56482



website: www.AffinityRealEstate.com | email: info@affinityrealestate.com | office: 218-237-3333 | fax:218-237-3377



\$750,000
MLS 7095479 Commercial
418 Jefferson Street
Wadena MN 56482