



MLS 7095541 Residential

**\$429,900**

3,176 sq ft  
6 bedrooms  
4 baths

928 Reno Street  
Hawley MN 56549

Status: Coming Soon

**Description:**

**RARE FIND IN THE HEART OF HAWLEY!**

This spacious 1½-story home is situated on a beautiful 0.87-acre lot in Hawley. Offering 6 bedrooms, 4 bathrooms, and approximately 3,100 square feet, this home provides plenty of space for everyone. The private upper-level primary suite, located above the garage, features a large bedroom, bathroom, and walk-in closet—creating a peaceful retreat away from the main living areas. Inside, the home features a generous kitchen perfect for gatherings, as well as multiple living spaces. A bright family room with vaulted ceilings and a fireplace offers a warm, inviting atmosphere, complemented by a separate formal living room for added flexibility. A 3-season porch provides the perfect spot to enjoy morning coffee or unwind while taking in views of the backyard. Many important updates have already been completed, including the HVAC system, updated bathrooms, impact-resistant shingles, and a new sewer line. Outside, enjoy a large yard with a fire pit area, plus a detached shed/shop/man cave with a studio space above. Enjoy the best of both worlds with a quiet, country-like setting right in town. Watch wildlife from your backyard, relax among mature trees, and take advantage of nearby walking paths and the proximity to the school and park.

Act fast, schedule your showing today before its gone!  
Showings start Thursday, July 9th.

**Additional Details:**

Year Built	1978
Lot Acres	0.87
Lot Dimensions	0x0
Garage Stalls	2
School District	150
Taxes	\$5,424
Taxes with Assessments	\$5,474
Tax Year	2026

**Additional Features:**

**Basement:** Crawl Space, Egress Window(s), Finished, Full, Walkout **Fuel:** Natural Gas **Garage:** 2 **Heat:** Forced Air **Sewer:** City Sewer/Connected  
**Water:** City Water/Connected **Air Conditioning:** Central Air



Listed By:  
Vision Realty  
in front on to 230th St N continue straight on 10th St

Affinity Real Estate Inc. participates in the Regional Multiple Listing Service of Minnesota, Inc Broker Reciprocity (sm) program, allowing us to display other broker's listings on our website. All properties are subject to prior sale, change or withdrawal.



**Call Affinity Real Estate**  
**218-237-3333**  
**info@affinityrealestate.com**



**Affinity Real Estate - 600 Park Avenue South - Park Rapids MN 56470**



website: [www.AffinityRealEstate.com](http://www.AffinityRealEstate.com) | email: [info@affinityrealestate.com](mailto:info@affinityrealestate.com) | office: 218-237-3333 | fax:218-237-3377



**\$429,900**  
MLS 7095541 Residential  
928 Reno Street  
Hawley MN 56549



website: [www.AffinityRealEstate.com](http://www.AffinityRealEstate.com) | email: [info@affinityrealestate.com](mailto:info@affinityrealestate.com) | office: 218-237-3333 | fax: 218-237-3377

**Affinity**  
REAL ESTATE INC

**\$429,900**  
MLS 7095541 Residential  
928 Reno Street  
Hawley MN 56549



website: [www.AffinityRealEstate.com](http://www.AffinityRealEstate.com) | email: [info@affinityrealestate.com](mailto:info@affinityrealestate.com) | office: 218-237-3333 | fax: 218-237-3377



**\$429,900**  
MLS 7095541 Residential  
928 Reno Street  
Hawley MN 56549



website: [www.AffinityRealEstate.com](http://www.AffinityRealEstate.com) | email: [info@affinityrealestate.com](mailto:info@affinityrealestate.com) | office: 218-237-3333 | fax: 218-237-3377

**Affinity**  
REAL ESTATE INC

**\$429,900**  
MLS 7095541 Residential  
928 Reno Street  
Hawley MN 56549



website: [www.AffinityRealEstate.com](http://www.AffinityRealEstate.com) | email: [info@affinityrealestate.com](mailto:info@affinityrealestate.com) | office: 218-237-3333 | fax:218-237-3377



**\$429,900**  
MLS 7095541 Residential  
928 Reno Street  
Hawley MN 56549



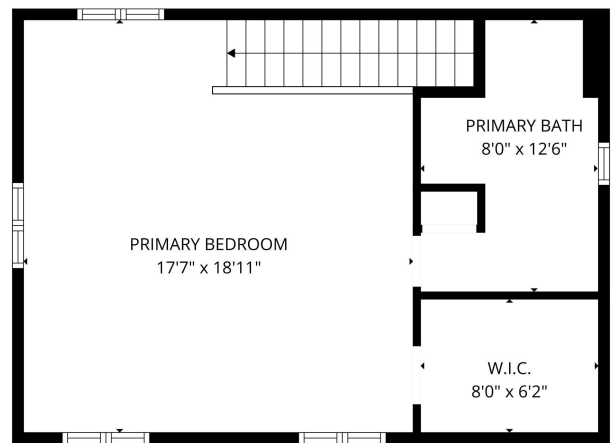
website: [www.AffinityRealEstate.com](http://www.AffinityRealEstate.com) | email: [info@affinityrealestate.com](mailto:info@affinityrealestate.com) | office: 218-237-3333 | fax:218-237-3377



**\$429,900**  
MLS 7095541 Residential  
928 Reno Street  
Hawley MN 56549



FLOOR PLAN CREATED BY CUBICASA APP. MEASUREMENTS DEEMED HIGHLY RELIABLE BUT NOT GUARANTEED.

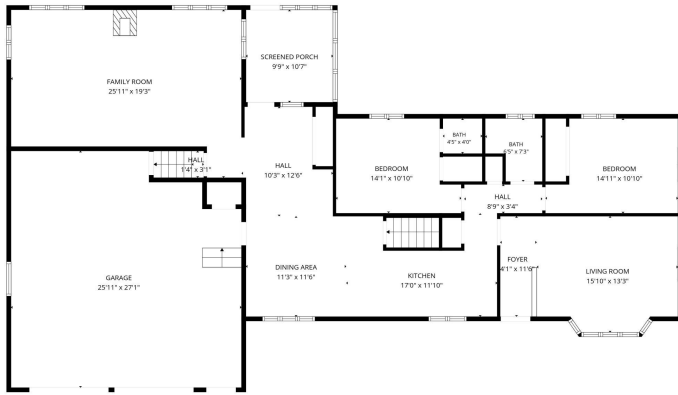


FLOOR PLAN CREATED BY CUBICASA APP. MEASUREMENTS DEEMED HIGHLY RELIABLE BUT NOT GUARANTEED.

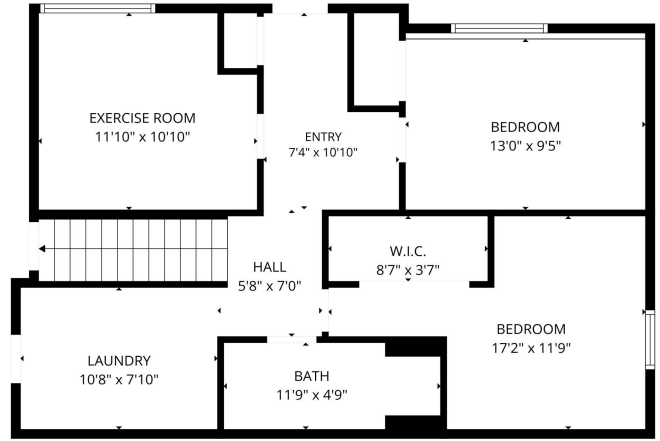
website: [www.AffinityRealEstate.com](http://www.AffinityRealEstate.com) | email: [info@affinityrealestate.com](mailto:info@affinityrealestate.com) | office: 218-237-3333 | fax: 218-237-3377



**\$429,900**  
 MLS 7095541 Residential  
 928 Reno Street  
 Hawley MN 56549



FLOOR PLAN CREATED BY CURICASA APP. MEASUREMENTS DEEMED HIGHLY RELIABLE BUT NOT GUARANTEED.



FLOOR PLAN CREATED BY CURICASA APP. MEASUREMENTS DEEMED HIGHLY RELIABLE BUT NOT GUARANTEED.

website: [www.AffinityRealEstate.com](http://www.AffinityRealEstate.com) | email: [info@affinityrealestate.com](mailto:info@affinityrealestate.com) | office: 218-237-3333 | fax: 218-237-3377



**\$429,900**  
 MLS 7095541 Residential  
 928 Reno Street  
 Hawley MN 56549