



MLS 7095563 Lake Land

**\$325,000**

**Description:**

With 25.3 acres and 204' shoreline on Maple Lake, this property offers a chance to enjoy the quieter side of lake life. Surrounded by trees and natural beauty, there's plenty of room to build, explore, and create a retreat that fits the way you want to spend time at the lake. Maple Lake is a peaceful 76-acre lake known for good fishing and uncrowded waters. Spend the morning casting for crappies, bass, northern pike, and bluegills, paddle along the shoreline, or simply enjoy the calm setting. The smaller size of the lake helps preserve the sense of peace that draws so many people to northern Minnesota. When you're ready to venture out, Longville is just a short drive away for dining, shopping, and everyday conveniences. The nearby Chippewa National Forest provides miles of opportunities for hiking, wildlife viewing, and exploring the woods in every season. Whether you picture a cabin tucked among the trees, a year-round home with room for guests, or simply a place to escape and reconnect with nature, this property offers the space and setting to make it happen. Watch the seasons change, listen to the calls of loons across the water, and enjoy the simple pleasures that make time at the lake so memorable.

**Additional Details:**

Lot Acres	25.3
Lot Dimensions	204x1143x1021x948x984x199x989x133x
	886
School District	118
Taxes	\$848
Taxes with Assessments	\$848
Tax Year	2026

**Additional Features:**

**Driving Directions:**

From Longville - Head N on Hwy 84 Approx 2 miles to the subject property on the right. (Neighboring fire # is 5824)



Listed By:  
Heartland Real Estate

Affinity Real Estate Inc. participates in the Regional Multiple Listing Service of Minnesota, Inc Broker Reciprocity (sm) program, allowing us to display other broker's listings on our website. All properties are subject to prior sale, change or withdrawal.



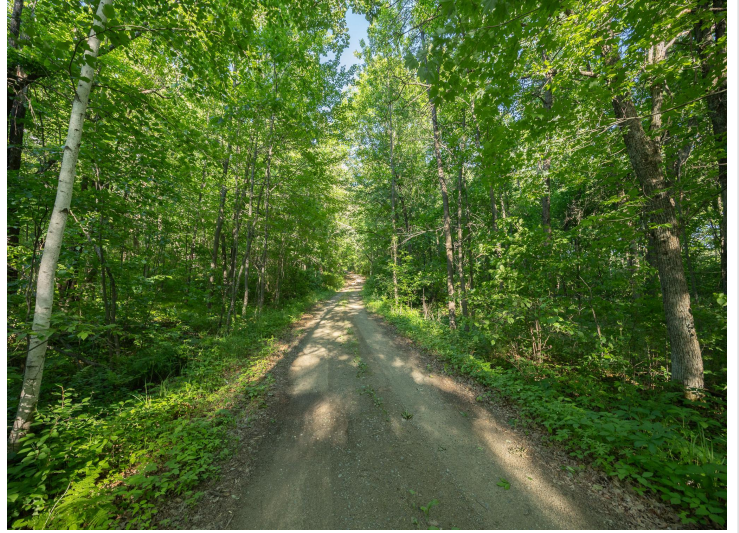
**Call Affinity Real Estate**

**218-237-3333**

**info@affinityrealestate.com**



**Affinity Real Estate - 600 Park Avenue South - Park Rapids MN 56470**



website: [www.AffinityRealEstate.com](http://www.AffinityRealEstate.com) | email: [info@affinityrealestate.com](mailto:info@affinityrealestate.com) | office: 218-237-3333 | fax:218-237-3377



**\$325,000**  
MLS 7095563 Lake Land  
TBD State Hwy 84  
Longville MN 56655



website: [www.AffinityRealEstate.com](http://www.AffinityRealEstate.com) | email: [info@affinityrealestate.com](mailto:info@affinityrealestate.com) | office: 218-237-3333 | fax:218-237-3377



**\$325,000**  
MLS 7095563 Lake Land  
TBD State Hwy 84  
Longville MN 56655



website: [www.AffinityRealEstate.com](http://www.AffinityRealEstate.com) | email: [info@affinityrealestate.com](mailto:info@affinityrealestate.com) | office: 218-237-3333 | fax:218-237-3377



**\$325,000**  
MLS 7095563 Lake Land  
TBD State Hwy 84  
Longville MN 56655

website: [www.AffinityRealEstate.com](http://www.AffinityRealEstate.com) | email: [info@affinityrealestate.com](mailto:info@affinityrealestate.com) | office: 218-237-3333 | fax:218-237-3377



**\$325,000**

MLS 7095563 Lake Land  
TBD State Hwy 84  
Longville MN 56655