



MLS 7095679 Lake Home

\$599,000

1,488 sq ft
2 bedrooms
1 baths

17619 Ivy Drive
Park Rapids MN 56470

Waterfront: Pickerel

Status: Active

Description:

Check out this beautiful 2+ bedroom, 1-bath log-sided home/cabin featuring a tuck-under 2+ stall garage/boathouse! Located approximately 12 miles northeast of Park Rapids, this property is in the heart of one of Minnesota's premier vacation destinations and just 21 miles from Itasca State Park, home to the headwaters of the mighty Mississippi River.

This custom-built home sits on nearly 1.5 acres of high ground overlooking Pickerel Lake, boasting more than 220 feet of shoreline with a beautiful mix of sand and small rock.

Inside, you'll find two main-level bedrooms connected by a convenient walk-through closet, a full modern bathroom, and a cozy kitchen and dining area. A bonus game room separates the kitchen from the lofted living room and features patio doors leading to the expansive lakeside deck. High-end custom window and door treatments complement the rustic Northwoods charm found throughout the home.

The upper level is accessed by an open central staircase leading to two spacious loft areas. The south-facing loft is currently used as additional sleeping space, while the lakeside loft serves as a study/library with access to a private upper-level deck offering panoramic views of Pickerel Lake.

Whether you're looking for a cozy weekend getaway, a year-round residence, or the perfect place to enjoy Minnesota's lake country, this one-of-a-kind property offers an exceptional blend of privacy, comfort, and natural beauty. Don't miss this opportunity to own your own slice of the Northwoods on beautiful Pickerel Lake!

Additional Details:

Year Built	1992
Lot Acres	1.36
Lot Dimensions	Irregular
Garage Stalls	2
School District	309
Taxes	\$2,165
Taxes with Assessments	\$2,410



Listed By: 2026
Hewitt Jackson Real Estate

Additional Features:
Affinity Real Estate Inc. participates in the Regional Multiple Listing Service of Minnesota, Inc. Broker Reciprocity Program, allowing us to display other broker's listings on our website. All properties are subject to prior sale, change or withdrawal.

Driving Direction:
From Hwys. 71/34 in Park Rapids, go E. on 34 to a left on Co. 4, follow (9 mi) to a left on 270th, follow (1 mi) to a left on Holly Rd., follow (1/2 mi) to a left on Ivy Drive, follow to property on right. Fire# 17619. See sign.



Call Affinity Real Estate
218-237-3333
info@affinityrealestate.com



Affinity Real Estate - 600 Park Avenue South - Park Rapids MN 56470



website: www.AffinityRealEstate.com | email: info@affinityrealestate.com | office: 218-237-3333 | fax:218-237-3377

Affinity
REAL ESTATE INC

\$599,000
MLS 7095679 Lake Home
17619 Ivy Drive
Park Rapids MN 56470



website: www.AffinityRealEstate.com | email: info@affinityrealestate.com | office: 218-237-3333 | fax:218-237-3377



\$599,000
MLS 7095679 Lake Home
17619 Ivy Drive
Park Rapids MN 56470



website: www.AffinityRealEstate.com | email: info@affinityrealestate.com | office: 218-237-3333 | fax:218-237-3377



\$599,000
MLS 7095679 Lake Home
17619 Ivy Drive
Park Rapids MN 56470



website: www.AffinityRealEstate.com | email: info@affinityrealestate.com | office: 218-237-3333 | fax: 218-237-3377

Affinity
REAL ESTATE INC

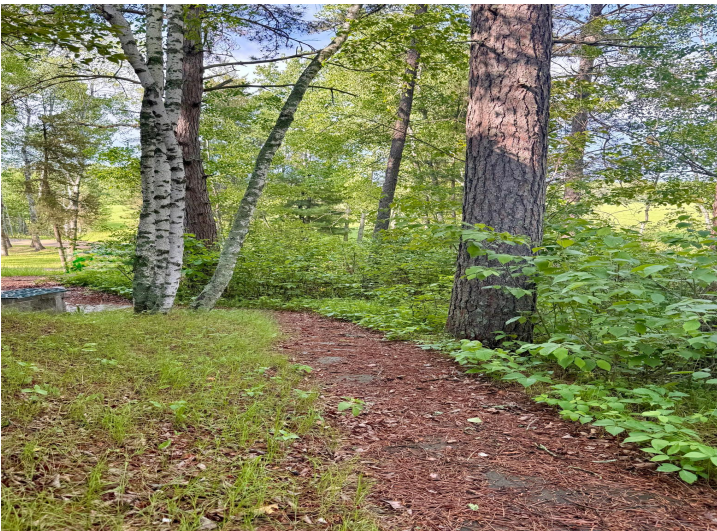
\$599,000
MLS 7095679 Lake Home
17619 Ivy Drive
Park Rapids MN 56470



website: www.AffinityRealEstate.com | email: info@affinityrealestate.com | office: 218-237-3333 | fax: 218-237-3377

Affinity
REAL ESTATE INC

\$599,000
MLS 7095679 Lake Home
17619 Ivy Drive
Park Rapids MN 56470



website: www.AffinityRealEstate.com | email: info@affinityrealestate.com | office: 218-237-3333 | fax:218-237-3377

Affinity
REAL ESTATE INC

\$599,000
MLS 7095679 Lake Home
17619 Ivy Drive
Park Rapids MN 56470



website: www.AffinityRealEstate.com | email: info@affinityrealestate.com | office: 218-237-3333 | fax:218-237-3377



\$599,000
MLS 7095679 Lake Home
17619 Ivy Drive
Park Rapids MN 56470