



MLS 7095810 Land

\$45,000

1.4 Acres
Raw Land

Lot A County Rd 238
Deer River MN 56636

Status: Active

Description:

Private building lot near Moose Lake, just 20 miles from Grand Rapids. Building site is cleared and driveway access is in. All utilities are close by. Build your dream home or up-north base camp tucked in the woods with lake views of Moose Lake from the top of the hill and great proximity to premier lakes and trails!

Additional adjoining lot is available for purchase.

Additional Details:

Lot Acres	1.4
Lot Dimensions	230x280
School District	318
Taxes	\$88
Taxes with Assessments	\$88
Tax Year	2026

Additional Features:

Driving Directions:

from Deer River, N on 6 to R on 19 to L on 236 to property



Listed By:
Pemberton RE

Affinity Real Estate Inc. participates in the Regional Multiple Listing Service of Minnesota, Inc Broker Reciprocity (sm) program, allowing us to display other broker's listings on our website. All properties are subject to prior sale, change or withdrawal.



Call Affinity Real Estate

218-237-3333

info@affinityrealestate.com



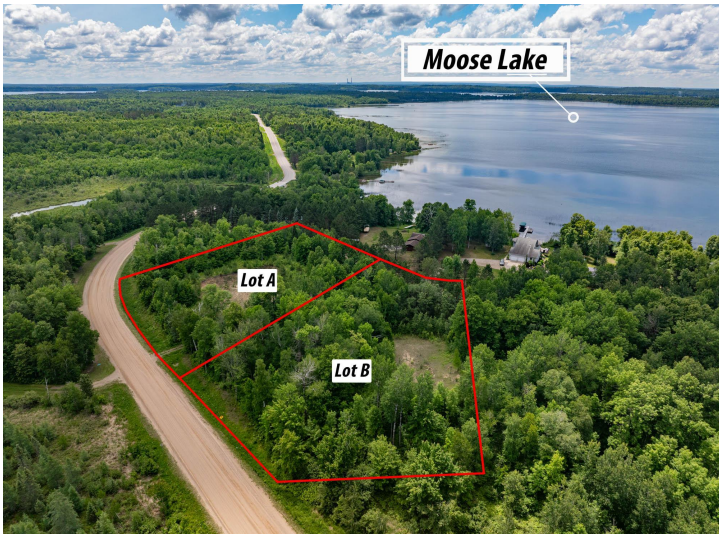
Affinity Real Estate - 600 Park Avenue South - Park Rapids MN 56470



website: www.AffinityRealEstate.com | email: info@affinityrealestate.com | office: 218-237-3333 | fax: 218-237-3377



\$45,000
MLS 7095810 Land
Lot A County Rd 238
Deer River MN 56636



website: www.AffinityRealEstate.com | email: info@affinityrealestate.com | office: 218-237-3333 | fax:218-237-3377



\$45,000
MLS 7095810 Land
Lot A County Rd 238
Deer River MN 56636