



MLS 7095859 Land

\$109,000

2.33 Acres
Finished Lot(s)

12052 Firefly Lane
Brainerd MN 56401

Status: Active

Description:

Property is located 3 minutes from Maddens classic golf course and restaurant, across the street from city of East Gull lake, plenty of room for your dream home and a pole barn. School is designated Pillager but allows open enrollment.

Additional Details:

Lot Acres	2.33
Lot Dimensions	209x470x209x470
School District	181
Taxes	\$108
Taxes with Assessments	\$108
Tax Year	2026

Additional Features:

Driving Directions:

371 N to Pine Beach Road (County Road 77), follow Pine Beach Road to the Legacy Golf Course, take Left on to Bass Lake Road. Bass Lake Road turns into 13th Avenue SW, turn right on 120th, left onto Firefly.



Listed By:
Get You Moved Realty

Affinity Real Estate Inc. participates in the Regional Multiple Listing Service of Minnesota, Inc Broker Reciprocity (sm) program, allowing us to display other broker's listings on our website. All properties are subject to prior sale, change or withdrawal.



Call Affinity Real Estate

218-237-3333

info@affinityrealestate.com



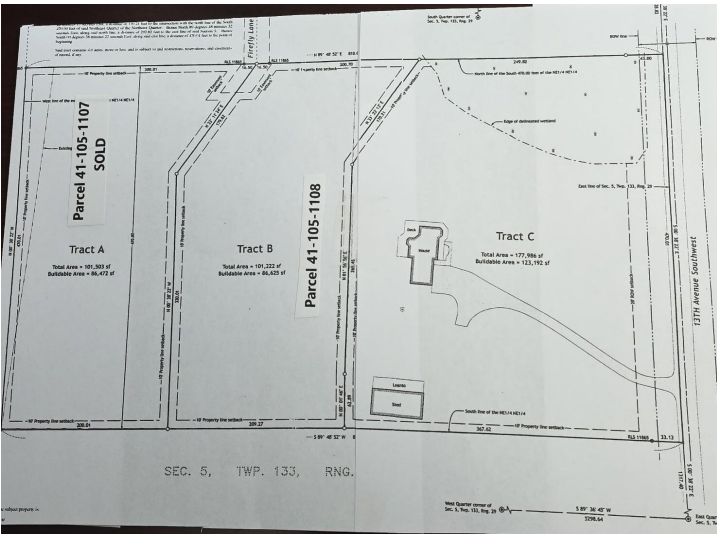
Affinity Real Estate - 600 Park Avenue South - Park Rapids MN 56470



website: www.AffinityRealEstate.com | email: info@affinityrealestate.com | office: 218-237-3333 | fax:218-237-3377



\$109,000
MLS 7095859 Land
12052 Firefly Lane
Brainerd MN 56401



website: www.AffinityRealEstate.com | email: info@affinityrealestate.com | office: 218-237-3333 | fax: 218-237-3377



\$109,000
MLS 7095859 Land
12052 Firefly Lane
Brainerd MN 56401