



MLS 7096697 Land

\$299,900

33.95 Acres
Raw Land

7625 96th Street
Motley MN 56466

Status: Active

Description:

Discover the possibilities at 7625 96th St SW in Motley! This exceptional 33.95-acre property offers the perfect blend of wooded privacy and open pasture, making it an ideal setting for hunting, hobby farming, livestock, or building your dream home. With acreage approximately half wooded and half pasture, you'll enjoy endless opportunities to create the lifestyle you've been looking for. There is also fiber optic available and electricity is supplied to the property.

The property comes with a 54' x 88' pole building, machine shed, and silo, providing abundant space for equipment, storage, or workshop use. A deep well and existing septic system are already installed at 7625, making future development even more convenient.


Adding even more value, the northwest corner of the property has secondary address 7687 96th St SW and features a second septic system, creating exciting possibilities for an additional home, guest house, extra storage building, or even a business venture (subject to local approvals). With the property currently zoned for 5 acre minimum lots, buyers may also explore future subdivision potential.

Whether you're searching for a hunting/recreational retreat, hobby farm, investment opportunity, or the perfect location to build your forever home, this versatile property offers the space, infrastructure, and flexibility to bring your vision to life. Schedule your showing today and experience the endless possibilities this unique acreage has to offer!

Additional Details:

Lot Acres	33.95
Lot Dimensions	1320x1125x1319x1112
School District	2170
Taxes	\$1,408
Taxes with Assessments	\$1,494
Tax Year	2026

Additional Features:

 Listed By:
Edina Realty, Inc.
St West. Property and sign on left. Second driveway, access to NW corner of property. GPS is accurate.

Affinity Real Estate Inc. participates in the Regional Multiple Listing Service of Minnesota, Inc Broker Reciprocity (sm) program, allowing us to display other broker's listings on our website. All properties are subject to prior sale, change or withdrawal.

 **Call Affinity Real Estate**
218-237-3333
info@affinityrealestate.com

Affinity Real Estate - 600 Park Avenue South - Park Rapids MN 56470



website: www.AffinityRealEstate.com | email: info@affinityrealestate.com | office: 218-237-3333 | fax:218-237-3377

Affinity
REAL ESTATE INC

\$299,900
MLS 7096697 Land
7625 96th Street
Motley MN 56466



website: www.AffinityRealEstate.com | email: info@affinityrealestate.com | office: 218-237-3333 | fax:218-237-3377



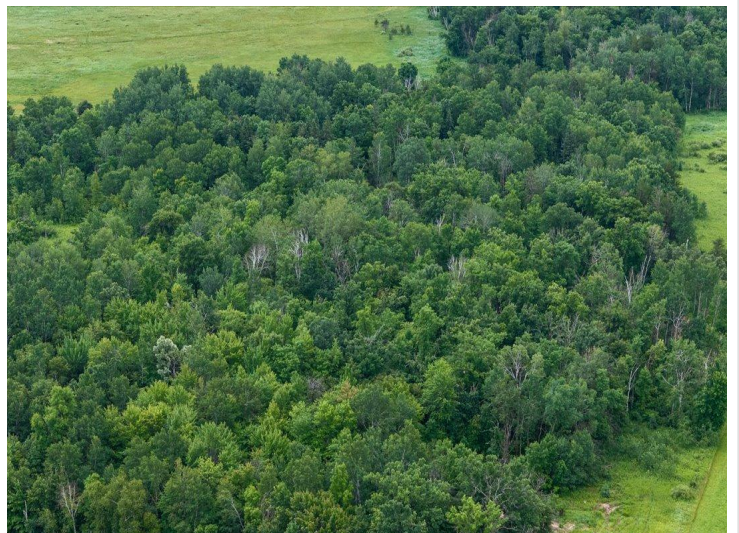
\$299,900
MLS 7096697 Land
7625 96th Street
Motley MN 56466



website: www.AffinityRealEstate.com | email: info@affinityrealestate.com | office: 218-237-3333 | fax:218-237-3377



\$299,900
MLS 7096697 Land
7625 96th Street
Motley MN 56466



website: www.AffinityRealEstate.com | email: info@affinityrealestate.com | office: 218-237-3333 | fax:218-237-3377



\$299,900
MLS 7096697 Land
7625 96th Street
Motley MN 56466



website: www.AffinityRealEstate.com | email: info@affinityrealestate.com | office: 218-237-3333 | fax:218-237-3377



\$299,900
MLS 7096697 Land
7625 96th Street
Motley MN 56466



website: www.AffinityRealEstate.com | email: info@affinityrealestate.com | office: 218-237-3333 | fax:218-237-3377



\$299,900
MLS 7096697 Land
7625 96th Street
Motley MN 56466