



MLS 7096724 Lake Home

**\$1,285,000**

3,298 sq ft  
2 bedrooms  
2 baths

10586 Turtle River Lake Road  
Bemidji MN 56601

Waterfront: Turtle River

Status: Active

**Description:**

Unique home sitting on 5.58 acres with appx. 730' on Turtle River Lake! This custom home was built in 2009 with expansive windows to take advantage of the stunning views year round; water, wildlife, and spectacular sunset views on Turtle River Lake! Acreage and lakeshore offer wonderful privacy and potential for dividing into another building lot. Home features include: 26x30 detached garage (finished and heated), geothermal (ground loop) system, full crawl space, loft area above great room, granite counters, sprawling ensuite bath with tiled shower and heated floors, oversized tub and huge walk in closet.

**Additional Details:**

Year Built	2009
Lot Acres	5.58
Lot Dimensions	387x823x352x730
Garage Stalls	4
School District	31
Taxes	\$10,800
Taxes with Assessments	\$9,680
Tax Year	2026

**Additional Features:**

**Basement:** Crawl Space, Drain Tiled **Fuel:** Electric, Propane **Garage:** 4 **Heat:** Forced Air, Geothermal **Sewer:** Septic System Compliant - Yes **Water:** 4-Inch Submersible **Air Conditioning:** Central Air

**Driving Directions:**

North on Hwy 71 appx. 11 miles, Right on Turtle River Lake Road (22 East), 1.6 miles on Right.



Listed By:  
Lake-N-Woods Realty

Affinity Real Estate Inc. participates in the Regional Multiple Listing Service of Minnesota, Inc Broker Reciprocity (sm) program, allowing us to display other broker's listings on our website. All properties are subject to prior sale, change or withdrawal.



**Call Affinity Real Estate**

**218-237-3333**

**info@affinityrealestate.com**



**Affinity Real Estate - 600 Park Avenue South - Park Rapids MN 56470**



website: [www.AffinityRealEstate.com](http://www.AffinityRealEstate.com) | email: [info@affinityrealestate.com](mailto:info@affinityrealestate.com) | office: 218-237-3333 | fax:218-237-3377



**\$1,285,000**  
MLS 7096724 Lake Home  
10586 Turtle River Lake  
Road  
Bemidji MN 56601



website: [www.AffinityRealEstate.com](http://www.AffinityRealEstate.com) | email: [info@affinityrealestate.com](mailto:info@affinityrealestate.com) | office: 218-237-3333 | fax:218-237-3377



**\$1,285,000**  
MLS 7096724 Lake Home  
10586 Turtle River Lake  
Road  
Bemidji MN 56601



website: [www.AffinityRealEstate.com](http://www.AffinityRealEstate.com) | email: [info@affinityrealestate.com](mailto:info@affinityrealestate.com) | office: 218-237-3333 | fax: 218-237-3377

**Affinity**  
REAL ESTATE INC

**\$1,285,000**  
MLS 7096724 Lake Home  
10586 Turtle River Lake  
Road  
Bemidji MN 56601



website: [www.AffinityRealEstate.com](http://www.AffinityRealEstate.com) | email: [info@affinityrealestate.com](mailto:info@affinityrealestate.com) | office: 218-237-3333 | fax:218-237-3377



**\$1,285,000**  
MLS 7096724 Lake Home  
10586 Turtle River Lake  
Road  
Bemidji MN 56601



website: [www.AffinityRealEstate.com](http://www.AffinityRealEstate.com) | email: [info@affinityrealestate.com](mailto:info@affinityrealestate.com) | office: 218-237-3333 | fax: 218-237-3377

**Affinity**  
REAL ESTATE INC

**\$1,285,000**  
MLS 7096724 Lake Home  
10586 Turtle River Lake  
Road  
Bemidji MN 56601



website: [www.AffinityRealEstate.com](http://www.AffinityRealEstate.com) | email: [info@affinityrealestate.com](mailto:info@affinityrealestate.com) | office: 218-237-3333 | fax: 218-237-3377

**Affinity**  
REAL ESTATE INC

**\$1,285,000**  
MLS 7096724 Lake Home  
10586 Turtle River Lake  
Road  
Bemidji MN 56601



website: [www.AffinityRealEstate.com](http://www.AffinityRealEstate.com) | email: [info@affinityrealestate.com](mailto:info@affinityrealestate.com) | office: 218-237-3333 | fax:218-237-3377

**Affinity**  
REAL ESTATE INC

**\$1,285,000**  
MLS 7096724 Lake Home  
10586 Turtle River Lake  
Road  
Bemidji MN 56601



website: [www.AffinityRealEstate.com](http://www.AffinityRealEstate.com) | email: [info@affinityrealestate.com](mailto:info@affinityrealestate.com) | office: 218-237-3333 | fax: 218-237-3377

**Affinity**  
REAL ESTATE INC

**\$1,285,000**  
MLS 7096724 Lake Home  
10586 Turtle River Lake  
Road  
Bemidji MN 56601



website: [www.AffinityRealEstate.com](http://www.AffinityRealEstate.com) | email: [info@affinityrealestate.com](mailto:info@affinityrealestate.com) | office: 218-237-3333 | fax:218-237-3377

**Affinity**  
REAL ESTATE INC

**\$1,285,000**  
MLS 7096724 Lake Home  
10586 Turtle River Lake  
Road  
Bemidji MN 56601



website: [www.AffinityRealEstate.com](http://www.AffinityRealEstate.com) | email: [info@affinityrealestate.com](mailto:info@affinityrealestate.com) | office: 218-237-3333 | fax:218-237-3377



**\$1,285,000**  
MLS 7096724 Lake Home  
10586 Turtle River Lake  
Road  
Bemidji MN 56601



website: [www.AffinityRealEstate.com](http://www.AffinityRealEstate.com) | email: [info@affinityrealestate.com](mailto:info@affinityrealestate.com) | office: 218-237-3333 | fax:218-237-3377



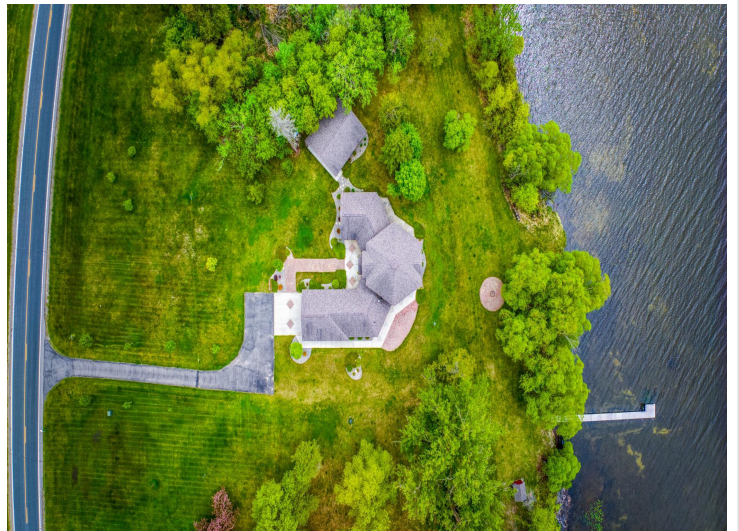
**\$1,285,000**  
MLS 7096724 Lake Home  
10586 Turtle River Lake  
Road  
Bemidji MN 56601



website: [www.AffinityRealEstate.com](http://www.AffinityRealEstate.com) | email: [info@affinityrealestate.com](mailto:info@affinityrealestate.com) | office: 218-237-3333 | fax:218-237-3377



**\$1,285,000**  
MLS 7096724 Lake Home  
10586 Turtle River Lake  
Road  
Bemidji MN 56601



website: [www.AffinityRealEstate.com](http://www.AffinityRealEstate.com) | email: [info@affinityrealestate.com](mailto:info@affinityrealestate.com) | office: 218-237-3333 | fax:218-237-3377

**Affinity**  
REAL ESTATE INC

**\$1,285,000**  
MLS 7096724 Lake Home  
10586 Turtle River Lake  
Road  
Bemidji MN 56601



website: [www.AffinityRealEstate.com](http://www.AffinityRealEstate.com) | email: [info@affinityrealestate.com](mailto:info@affinityrealestate.com) | office: 218-237-3333 | fax:218-237-3377

**Affinity**  
REAL ESTATE INC

**\$1,285,000**  
MLS 7096724 Lake Home  
10586 Turtle River Lake  
Road  
Bemidji MN 56601



website: [www.AffinityRealEstate.com](http://www.AffinityRealEstate.com) | email: [info@affinityrealestate.com](mailto:info@affinityrealestate.com) | office: 218-237-3333 | fax:218-237-3377

**Affinity**  
REAL ESTATE INC

**\$1,285,000**  
MLS 7096724 Lake Home  
10586 Turtle River Lake  
Road  
Bemidji MN 56601



website: [www.AffinityRealEstate.com](http://www.AffinityRealEstate.com) | email: [info@affinityrealestate.com](mailto:info@affinityrealestate.com) | office: 218-237-3333 | fax:218-237-3377



**\$1,285,000**  
MLS 7096724 Lake Home  
10586 Turtle River Lake  
Road  
Bemidji MN 56601