



MLS 7096780 Land

**\$137,900**

7.67 Acres  
Raw Land

TBD Pierson Drive  
Pequot Lakes MN 56472

Status: Active

**Description:**

Discover 7.67 acres of beautiful Northern Minnesota land in the heart of the Pequot Lakes area! Offering the perfect blend of privacy and convenience, this property features a pre-cleared building site, providing an excellent opportunity to build your dream home, cabin, or recreational retreat. Surrounded by the natural beauty that makes the Brainerd Lakes Area so desirable, you'll enjoy peaceful wooded surroundings while remaining just minutes from Pequot Lakes, championship golf courses, restaurants, shopping, and countless lakes for boating and fishing. Whether you're looking for a future homesite, a weekend getaway, or an investment in Minnesota lake country, this versatile acreage offers endless possibilities. Bring your building plans and start enjoying everything the Pequot Lakes lifestyle has to offer. Don't miss your chance to own 7.67 acres in one of Northern Minnesota's most sought-after areas. Schedule your showing today!

**Additional Details:**

Lot Acres	7.67
Lot Dimensions	334x666x666x333x333x333
School District	186
Taxes	\$320
Taxes with Assessments	\$320
Tax Year	2026

**Additional Features:**

**Driving Directions:**

From County Road 16, Turn onto Pierson Drive (Private Road), The Property will be on the left with a sign.



Listed By:  
Woods to Water Real Estate

Affinity Real Estate Inc. participates in the Regional Multiple Listing Service of Minnesota, Inc Broker Reciprocity (sm) program, allowing us to display other broker's listings on our website. All properties are subject to prior sale, change or withdrawal.



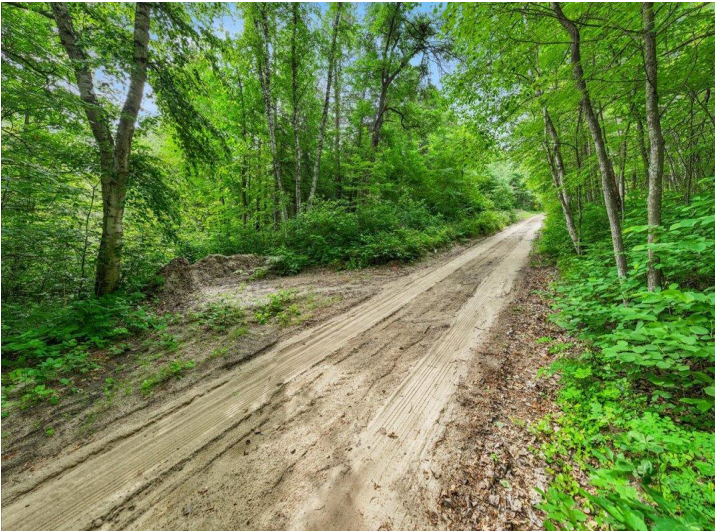
Call Affinity Real Estate

**218-237-3333**

[info@affinityrealestate.com](mailto:info@affinityrealestate.com)



Affinity Real Estate - 600 Park Avenue South - Park Rapids MN 56470



website: [www.AffinityRealEstate.com](http://www.AffinityRealEstate.com) | email: [info@affinityrealestate.com](mailto:info@affinityrealestate.com) | office: 218-237-3333 | fax: 218-237-3377



**\$137,900**  
MLS 7096780 Land  
TBD Pierson Drive  
Pequot Lakes MN 56472



website: [www.AffinityRealEstate.com](http://www.AffinityRealEstate.com) | email: [info@affinityrealestate.com](mailto:info@affinityrealestate.com) | office: 218-237-3333 | fax:218-237-3377



**\$137,900**  
MLS 7096780 Land  
TBD Pierson Drive  
Pequot Lakes MN 56472



website: [www.AffinityRealEstate.com](http://www.AffinityRealEstate.com) | email: [info@affinityrealestate.com](mailto:info@affinityrealestate.com) | office: 218-237-3333 | fax:218-237-3377



**\$137,900**  
MLS 7096780 Land  
TBD Pierson Drive  
Pequot Lakes MN 56472