



MLS 7096895 Residential

**\$249,900**

1,856 sq ft  
3 bedrooms  
2 baths

39467 605th Street  
Swatara MN 55785

Status: Active

**Description:**

Escape to the peace, privacy, and natural beauty of northern Minnesota with this charming country property nestled on approximately 10 acres in the heart of Aitkin County.

This well-maintained 3-bedroom, 2-bath home offers 1,344 square feet of comfortable living space and is perfectly suited for those seeking a rural lifestyle with room to roam. Built in 1994, the home features inviting living areas, functional living spaces, and picturesque views of the surrounding countryside.

Step outside and enjoy the endless possibilities this acreage provides. Whether you're dreaming of a hobby farm, hunting retreat, recreational property, or a peaceful year-round residence, this property offers the space and privacy to make it happen. Explore your own trails, garden to your heart's content, ride ATVs, watch abundant wildlife, or simply relax and enjoy the quiet beauty of nature.

Adding to the appeal, approximately 160 acres of State-owned land are located directly across the road, providing convenient access to additional recreational opportunities, hunting, hiking, wildlife viewing, and outdoor exploration right at your doorstep.

**Additional Details:**

Year Built	1994
Lot Acres	10
Lot Dimensions	650x649
Garage Stalls	2
School District	2
Taxes	\$932
Taxes with Assessments	\$932
Tax Year	2026

**Additional Features:**

**Fuel:** Propane **Heat:** Forced Air



Listed By:  
Pemberton RE

Search on Hwy 100, turn right on County road 7, left on County road 29, turn right on County road 19 or 605th street. House is 1/4 mile down on the left.  
Affinity Real Estate Inc. participates in the Regional Multiple Listing Service of Minnesota, Inc Broker Reciprocity (sm) program, allowing us to display other broker's listings on our website. All properties are subject to prior sale, change or withdrawal.



**Call Affinity Real Estate**

**218-237-3333**

**info@affinityrealestate.com**



**Affinity Real Estate - 600 Park Avenue South - Park Rapids MN 56470**



website: [www.AffinityRealEstate.com](http://www.AffinityRealEstate.com) | email: [info@affinityrealestate.com](mailto:info@affinityrealestate.com) | office: 218-237-3333 | fax:218-237-3377



**\$249,900**  
MLS 7096895 Residential  
39467 605th Street  
Swatara MN 55785



website: [www.AffinityRealEstate.com](http://www.AffinityRealEstate.com) | email: [info@affinityrealestate.com](mailto:info@affinityrealestate.com) | office: 218-237-3333 | fax:218-237-3377

**Affinity**  
REAL ESTATE INC

**\$249,900**  
MLS 7096895 Residential  
39467 605th Street  
Swatara MN 55785



website: [www.AffinityRealEstate.com](http://www.AffinityRealEstate.com) | email: [info@affinityrealestate.com](mailto:info@affinityrealestate.com) | office: 218-237-3333 | fax:218-237-3377



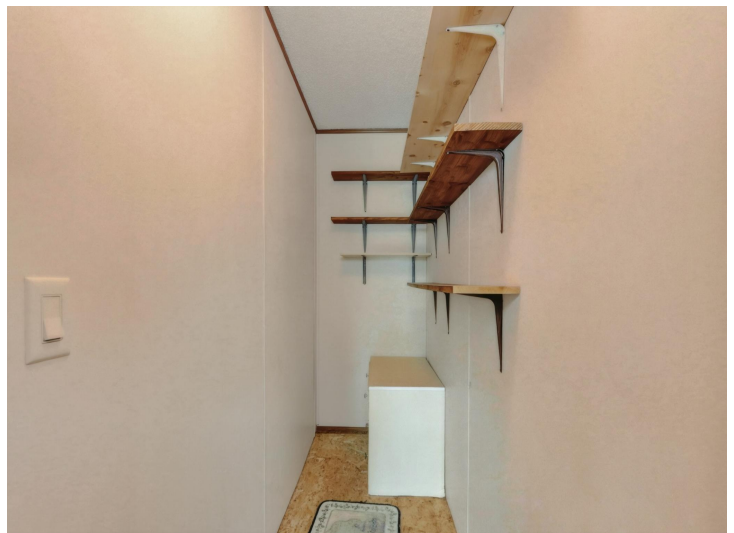
**\$249,900**  
MLS 7096895 Residential  
39467 605th Street  
Swatara MN 55785



website: [www.AffinityRealEstate.com](http://www.AffinityRealEstate.com) | email: [info@affinityrealestate.com](mailto:info@affinityrealestate.com) | office: 218-237-3333 | fax:218-237-3377

**Affinity**  
REAL ESTATE INC

**\$249,900**  
MLS 7096895 Residential  
39467 605th Street  
Swatara MN 55785



website: [www.AffinityRealEstate.com](http://www.AffinityRealEstate.com) | email: [info@affinityrealestate.com](mailto:info@affinityrealestate.com) | office: 218-237-3333 | fax:218-237-3377

**Affinity**  
REAL ESTATE INC

**\$249,900**  
MLS 7096895 Residential  
39467 605th Street  
Swatara MN 55785



website: [www.AffinityRealEstate.com](http://www.AffinityRealEstate.com) | email: [info@affinityrealestate.com](mailto:info@affinityrealestate.com) | office: 218-237-3333 | fax:218-237-3377

**Affinity**  
REAL ESTATE INC

**\$249,900**  
MLS 7096895 Residential  
39467 605th Street  
Swatara MN 55785



website: [www.AffinityRealEstate.com](http://www.AffinityRealEstate.com) | email: [info@affinityrealestate.com](mailto:info@affinityrealestate.com) | office: 218-237-3333 | fax:218-237-3377

**Affinity**  
REAL ESTATE INC

**\$249,900**  
MLS 7096895 Residential  
39467 605th Street  
Swatara MN 55785



website: [www.AffinityRealEstate.com](http://www.AffinityRealEstate.com) | email: [info@affinityrealestate.com](mailto:info@affinityrealestate.com) | office: 218-237-3333 | fax:218-237-3377



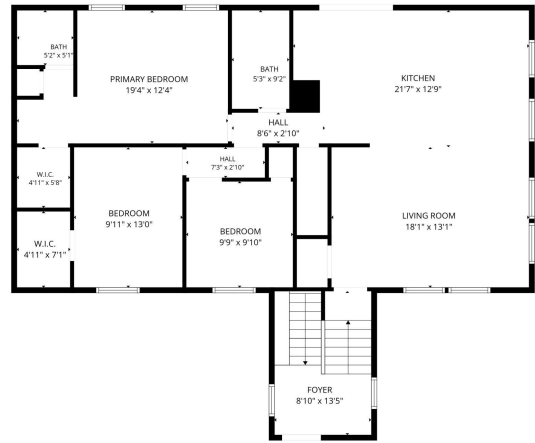
**\$249,900**  
MLS 7096895 Residential  
39467 605th Street  
Swatara MN 55785



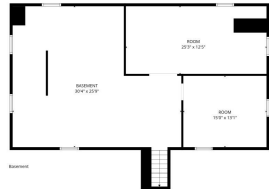
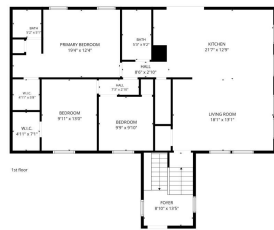
website: [www.AffinityRealEstate.com](http://www.AffinityRealEstate.com) | email: [info@affinityrealestate.com](mailto:info@affinityrealestate.com) | office: 218-237-3333 | fax: 218-237-3377

**Affinity**  
REAL ESTATE INC

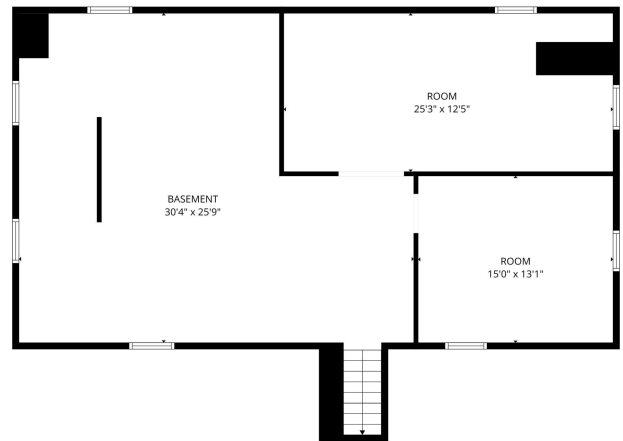
**\$249,900**  
MLS 7096895 Residential  
39467 605th Street  
Swatara MN 55785



FLOOR PLAN CREATED BY CUBICASA APP. MEASUREMENTS DEEMED HIGHLY RELIABLE BUT NOT GUARANTEED.



FLOOR PLAN CREATED BY CUBICASA APP. MEASUREMENTS DEEMED HIGHLY RELIABLE BUT NOT GUARANTEED.



FLOOR PLAN CREATED BY CUBICASA APP. MEASUREMENTS DEEMED HIGHLY RELIABLE BUT NOT GUARANTEED.

website: [www.AffinityRealEstate.com](http://www.AffinityRealEstate.com) | email: [info@affinityrealestate.com](mailto:info@affinityrealestate.com) | office: 218-237-3333 | fax: 218-237-3377



**\$249,900**  
 MLS 7096895 Residential  
 39467 605th Street  
 Swatara MN 55785