



MLS 7096952 Land

\$59,000

5.06 Acres
Finished Lot(s)

TBD 478th Ave
New York Mills MN 56567

Status: Active

Description:

Come and build your dream home on this 5 +/- acre building site located on a backlot to Rush Lake! Level meadow type lot located in a developing subdivision makes this a fantastic place to build!

Additional Details:

Year Built	1999
Lot Acres	5.06
Lot Dimensions	Irregular.
School District	553
Taxes	\$308
Taxes with Assessments	\$308
Tax Year	2025

Additional Features:

Driving Directions:

From Perham, Head south on Highway 78. Turn left (East) onto County Highway 14 (St. Lawrence Road). Property at end of street on right hand side.



Listed By:
Jack Chivers Realty

Affinity Real Estate Inc. participates in the Regional Multiple Listing Service of Minnesota, Inc Broker Reciprocity (sm) program, allowing us to display other broker's listings on our website. All properties are subject to prior sale, change or withdrawal.



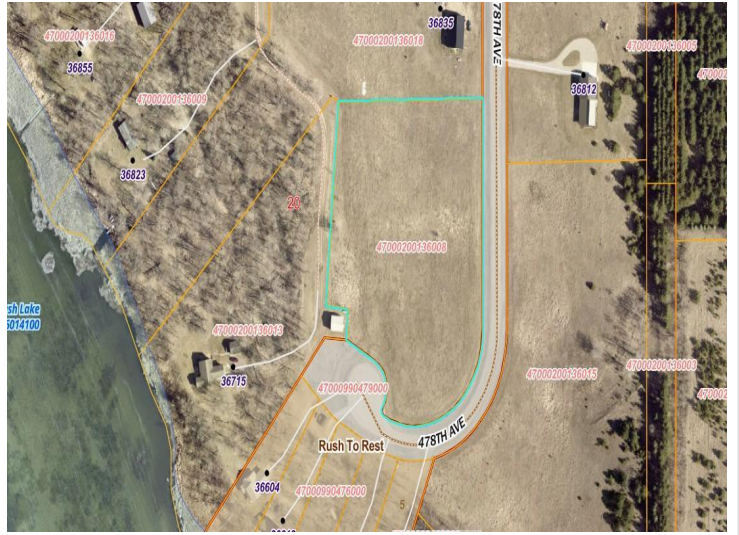
Call Affinity Real Estate

218-237-3333

info@affinityrealestate.com



Affinity Real Estate - 600 Park Avenue South - Park Rapids MN 56470



website: www.AffinityRealEstate.com | email: info@affinityrealestate.com | office: 218-237-3333 | fax:218-237-3377



\$59,000
MLS 7096952 Land
TBD 478th Ave
New York Mills MN 56567



website: www.AffinityRealEstate.com | email: info@affinityrealestate.com | office: 218-237-3333 | fax:218-237-3377



\$59,000
MLS 7096952 Land
TBD 478th Ave
New York Mills MN 56567