



MLS 7097063 Residential

\$425,000

2,093 sq ft
3 bedrooms
3 baths

8035 Moidore Drive
Bemidji MN 56601

Status: Active

Description:

Welcome to this beautiful well appointed two-story home on a large corner lot. The inviting main floor has a large entryway, upgraded custom kitchen, dining room, laundry room, a half bath and 2 living areas- one with a cozy gas fireplace. Upstairs you'll find the spacious primary suite which offers a large bedroom, bathroom with with double sinks, a tiled walk-in shower, and a generous walk-in closet. Just down the hall you'll find 2 more bedrooms and a full bath. Step outside and enjoy all this property has to offer, including a welcoming front porch, back patio, and a dedicated fire pit area. Situated on a large corner lot with a paved driveway, the property also boasts exceptional garage space with both a double attached finished and heated garage and a 4 stall detached finished garage, ideal for vehicles, hobbies, storage, or workshop space. This impressive home combines thoughtful design, outstanding amenities, and exceptional curb appeal in one beautiful package.

Additional Details:

Year Built	2016
Lot Acres	1.52
Lot Dimensions	290x230
Garage Stalls	6
School District	31
Taxes	\$4,048
Taxes with Assessments	\$4,048
Tax Year	2026

Additional Features:

Basement: None **Fuel:** Propane **Garage:** 6 **Heat:** Forced Air **Sewer:** Tank with Drainage Field **Water:** 4-Inch Submersible, Well **Air Conditioning:** Central Air

Driving Directions:

N on County 9 from HWY 2 west of Bemidji to Feelinrite Ln turn left, follow to Moidore. Home on corner.



Listed By:
218 Real Estate

Affinity Real Estate Inc. participates in the Regional Multiple Listing Service of Minnesota, Inc Broker Reciprocity (sm) program, allowing us to display other broker's listings on our website. All properties are subject to prior sale, change or withdrawal.



Call Affinity Real Estate

218-237-3333

info@affinityrealestate.com



Affinity Real Estate - 600 Park Avenue South - Park Rapids MN 56470



website: www.AffinityRealEstate.com | email: info@affinityrealestate.com | office: 218-237-3333 | fax: 218-237-3377

Affinity
REAL ESTATE INC

\$425,000
MLS 7097063 Residential
8035 Moidore Drive
Bemidji MN 56601



website: www.AffinityRealEstate.com | email: info@affinityrealestate.com | office: 218-237-3333 | fax:218-237-3377



\$425,000
MLS 7097063 Residential
8035 Moidore Drive
Bemidji MN 56601



website: www.AffinityRealEstate.com | email: info@affinityrealestate.com | office: 218-237-3333 | fax:218-237-3377



\$425,000
MLS 7097063 Residential
8035 Moidore Drive
Bemidji MN 56601



website: www.AffinityRealEstate.com | email: info@affinityrealestate.com | office: 218-237-3333 | fax: 218-237-3377

Affinity
REAL ESTATE INC

\$425,000
MLS 7097063 Residential
8035 Moidore Drive
Bemidji MN 56601



website: www.AffinityRealEstate.com | email: info@affinityrealestate.com | office: 218-237-3333 | fax:218-237-3377



\$425,000
MLS 7097063 Residential
8035 Moidore Drive
Bemidji MN 56601



website: www.AffinityRealEstate.com | email: info@affinityrealestate.com | office: 218-237-3333 | fax:218-237-3377



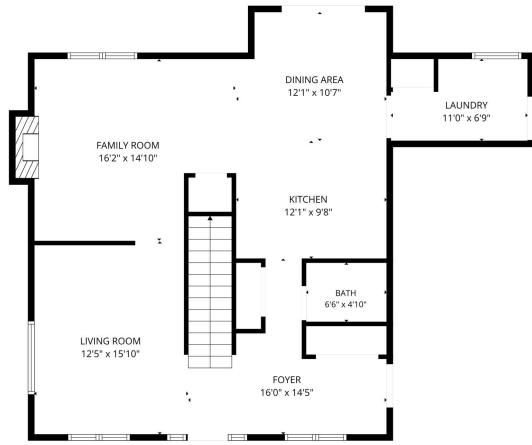
\$425,000
MLS 7097063 Residential
8035 Moidore Drive
Bemidji MN 56601



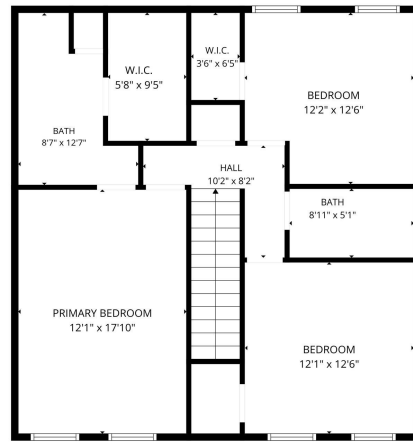
website: www.AffinityRealEstate.com | email: info@affinityrealestate.com | office: 218-237-3333 | fax: 218-237-3377



\$425,000
MLS 7097063 Residential
8035 Moidore Drive
Bemidji MN 56601



FLOOR PLAN CREATED BY CUBICASA APP. MEASUREMENTS DEEMED HIGHLY RELIABLE BUT NOT GUARANTEED.



FLOOR PLAN CREATED BY CUBICASA APP. MEASUREMENTS DEEMED HIGHLY RELIABLE BUT NOT GUARANTEED.

website: www.AffinityRealEstate.com | email: info@affinityrealestate.com | office: 218-237-3333 | fax: 218-237-3377



\$425,000
 MLS 7097063 Residential
 8035 Moidore Drive
 Bemidji MN 56601