



MLS 7097194 Residential

\$329,900

2,141 sq ft
5 bedrooms
2 baths

3020 72nd Street
Pequot Lakes MN 56472

Status: Coming Soon

Description:

Discover the potential of this charming 1917 farmhouse featuring 5 bedrooms, 2 bathrooms, situated on 20 scenic acres of rolling hills and mature trees. Home has many updates newer roof, 2018-35x20 Addition spacious living room, large bedroom with walk in closet in floor heat, tongue and groove ceilings. Remodeled kitchen, new mound septic 2019, on demand water heater, furnace 100k BTU Trane, dishwasher, kitchen cabinets, and new well pump. Septic compliant. (see supplements for list of all updates). Offered AS IS, the home has undergone many updates, with systems in place for future expansion, and is ready for your finishing touches. A new premier shed, mature apple trees, lilacs, roses, and a fenced pasture make this property ideal for horses, hobby farming, or simply enjoying the peaceful country setting. Rich in history as a former Century Farm, this is a rare opportunity to own a unique property in an excellent location just minutes from Nisswa, Pequot Lakes, and the area's lakes and recreational amenities. Don't miss this one!

Additional Details:

Year Built	1960
Lot Acres	20.12
Lot Dimensions	1330x655x1330x655
Garage Stalls	2
School District	2174
Taxes	\$764
Taxes with Assessments	\$850
Tax Year	2026

Additional Features:

Fuel: Propane **Heat:** Forced Air, Hot Water, In-Floor Heating

Driving Directions:

From Pequot, heading S on 371, turn right onto CR-29, in 5.6 miles turn right onto 25th Ave SW, in 1.0 mile turn left onto 72nd St SW, 1.3 miles on the right 3020 72nd St SW Pequot Lakes.



Listed By:
Kurilla Real Estate LTD

Affinity Real Estate Inc. participates in the Regional Multiple Listing Service of Minnesota, Inc Broker Reciprocity (sm) program, allowing us to display other broker's listings on our website. All properties are subject to prior sale, change or withdrawal.



Call Affinity Real Estate

218-237-3333

info@affinityrealestate.com



Affinity Real Estate - 600 Park Avenue South - Park Rapids MN 56470



website: www.AffinityRealEstate.com | email: info@affinityrealestate.com | office: 218-237-3333 | fax:218-237-3377

Affinity
REAL ESTATE INC

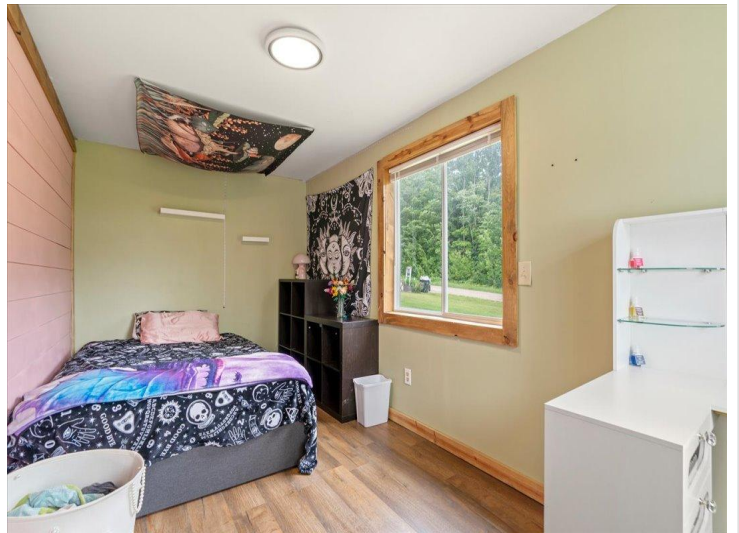
\$329,900
MLS 7097194 Residential
3020 72nd Street
Pequot Lakes MN 56472



website: www.AffinityRealEstate.com | email: info@affinityrealestate.com | office: 218-237-3333 | fax: 218-237-3377

Affinity
REAL ESTATE INC

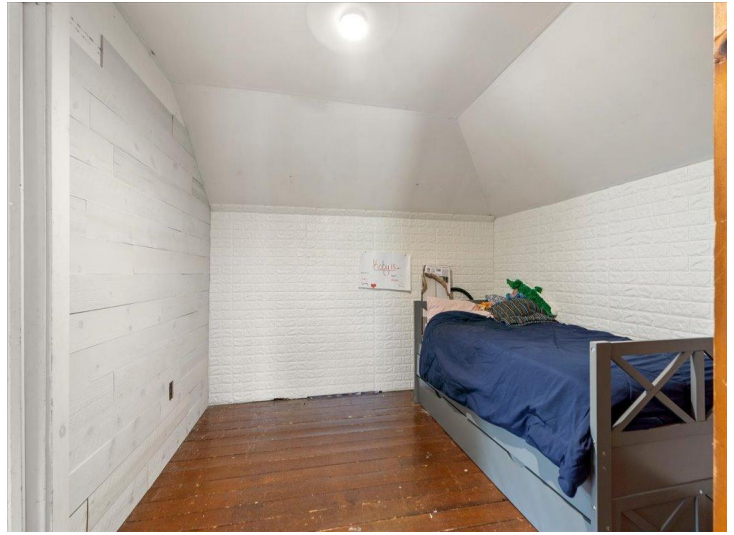
\$329,900
MLS 7097194 Residential
3020 72nd Street
Pequot Lakes MN 56472



website: www.AffinityRealEstate.com | email: info@affinityrealestate.com | office: 218-237-3333 | fax: 218-237-3377

Affinity
REAL ESTATE INC

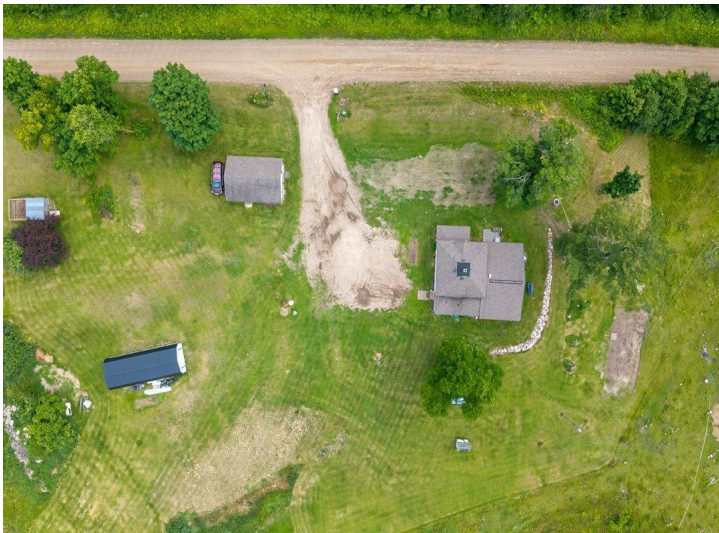
\$329,900
MLS 7097194 Residential
3020 72nd Street
Pequot Lakes MN 56472



website: www.AffinityRealEstate.com | email: info@affinityrealestate.com | office: 218-237-3333 | fax:218-237-3377

Affinity
REAL ESTATE INC

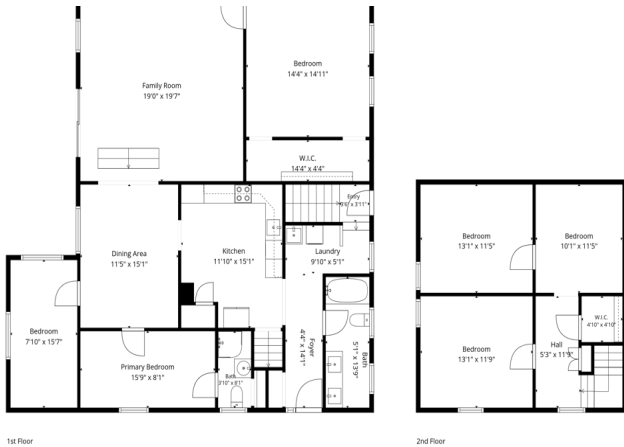
\$329,900
MLS 7097194 Residential
3020 72nd Street
Pequot Lakes MN 56472



website: www.AffinityRealEstate.com | email: info@affinityrealestate.com | office: 218-237-3333 | fax:218-237-3377

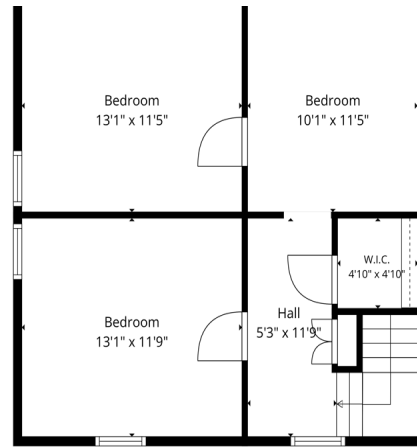


\$329,900
MLS 7097194 Residential
3020 72nd Street
Pequot Lakes MN 56472

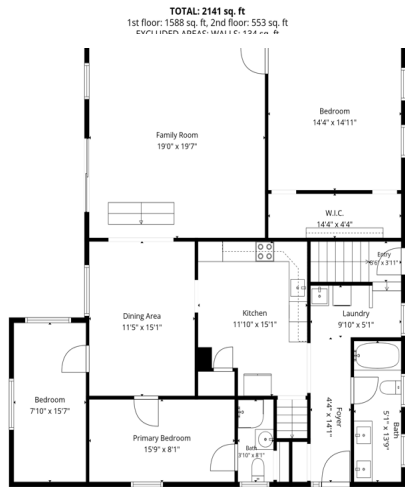


1st Floor

2nd Floor



TOTAL: 2141 sq. ft.
1st floor: 1588 sq. ft. 2nd floor: 553 sq. ft.
CORN LINDEN, AREA 45, WALL C. - 124 - 00 - 0



TOTAL: 2141 sq. ft.
1st floor: 1588 sq. ft. 2nd floor: 553 sq. ft.
CORN LINDEN, AREA 45, WALL C. - 124 - 00 - 0

website: www.AffinityRealEstate.com | email: info@affinityrealestate.com | office: 218-237-3333 | fax: 218-237-3377



\$329,900
MLS 7097194 Residential
3020 72nd Street
Pequot Lakes MN 56472