



MLS 7097200 Residential

**\$409,900**

1,371 sq ft  
3 bedrooms  
2 baths

121 Ridgeway Path  
Walker MN 56484

Status: Coming Soon

**Description:**

Welcome to Boulder Ridge Estates, Walker's newest development. This brand-new 2026-built home offers the perfect combination of modern finishes, one-level living, and a peaceful Northwoods setting. Situated on 3.6 acres surrounded by mature trees, you'll enjoy plenty of privacy while being just minutes from Walker and close to all the recreation Leech Lake has to offer.

With this 3-bedroom, 2-bath home features a thoughtfully designed open floor plan that feels both spacious and inviting. The kitchen is sure to be a favorite gathering spot with quartz countertops, soft-close cabinetry, all new stainless LG appliances and plenty of workspace. Large Andersen windows bring in natural light and showcase the beautiful, wooded surroundings.

The primary suite offers a comfortable retreat with a walk-in closet and private bath featuring a double vanity and tile finishes. You'll also appreciate the convenience of all living facilities on one level, making everyday living easy and functional.


Whether you're heading into Walker for shopping and dining, exploring nearby trails, or spending the day fishing, boating, and enjoying all that Leech Lake has to offer, this location makes it easy to enjoy the best of the Up North lifestyle.

Additional features include LP SmartSide siding and a heated two-stall attached garage.

If you've been looking for a brand-new home with acreage, privacy, and a great location close to Walker, this property is one you won't want to miss.

**Additional Details:**

Year Built	2026
Lot Acres	3.606
Lot Dimensions	253x90x19x19x211x121x85x250x538
Garage Stalls	2
School District	113


 Listed By: \$332  
 \$332  
 Affinity Real Estate LTD  
 Affinity Real Estate Inc. participates in the Regional Multiple Listing Service of Minnesota, Inc Broker Reciprocity (sm) program, allowing us to display other broker's listings on our website. All properties are subject to prior sale, change or withdrawal.  
**Additional Features:**  
**Basement:** None **Fuel:** Natural Gas, Propane **Garage:** 2 **Heat:** Ductless Mini-Split, In-Floor Heating **Sewer:** Mound Septic **Water:** Well, Air  
**Conditioning:** Ductless Mini-Split, Wall Unit(s)



Call Affinity Real Estate

**218-237-3333**

[info@affinityrealestate.com](mailto:info@affinityrealestate.com)



Affinity Real Estate - 608 Park Avenue South - Park Rapids MN 56470

**Driving Directions:**

From Walker, North onto MN-371 NW, turn left onto Sautbine Rd NW, follow to Ridgway Ln on right, fire number 121.



website: [www.AffinityRealEstate.com](http://www.AffinityRealEstate.com) | email: [info@affinityrealestate.com](mailto:info@affinityrealestate.com) | office: 218-237-3333 | fax:218-237-3377



**\$409,900**  
MLS 7097200 Residential  
121 Ridgeway Path  
Walker MN 56484



website: [www.AffinityRealEstate.com](http://www.AffinityRealEstate.com) | email: [info@affinityrealestate.com](mailto:info@affinityrealestate.com) | office: 218-237-3333 | fax: 218-237-3377



**\$409,900**  
MLS 7097200 Residential  
121 Ridgeway Path  
Walker MN 56484



website: [www.AffinityRealEstate.com](http://www.AffinityRealEstate.com) | email: [info@affinityrealestate.com](mailto:info@affinityrealestate.com) | office: 218-237-3333 | fax: 218-237-3377



**\$409,900**  
MLS 7097200 Residential  
121 Ridgeway Path  
Walker MN 56484



website: [www.AffinityRealEstate.com](http://www.AffinityRealEstate.com) | email: [info@affinityrealestate.com](mailto:info@affinityrealestate.com) | office: 218-237-3333 | fax:218-237-3377



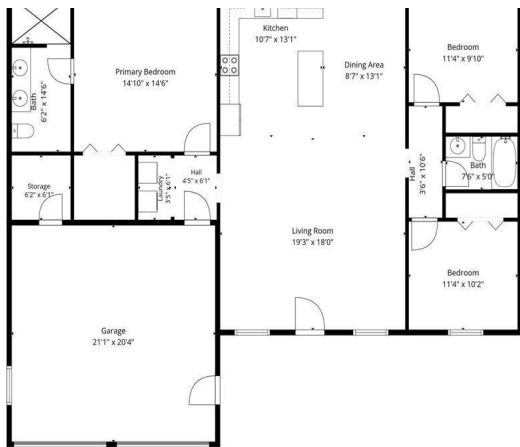
**\$409,900**  
MLS 7097200 Residential  
121 Ridgeway Path  
Walker MN 56484



website: [www.AffinityRealEstate.com](http://www.AffinityRealEstate.com) | email: [info@affinityrealestate.com](mailto:info@affinityrealestate.com) | office: 218-237-3333 | fax:218-237-3377

**Affinity**  
REAL ESTATE INC

**\$409,900**  
MLS 7097200 Residential  
121 Ridgeway Path  
Walker MN 56484



TOTAL: 1371 sq. ft.  
 1st floor: 1371 sq. ft.  
 EXCLUDED AREAS: GARAGE, PORCH, & PORCHES, STAIRS & HALLWAYS

website: [www.AffinityRealEstate.com](http://www.AffinityRealEstate.com) | email: [info@affinityrealestate.com](mailto:info@affinityrealestate.com) | office: 218-237-3333 | fax: 218-237-3377



**\$409,900**  
 MLS 7097200 Residential  
 121 Ridgeway Path  
 Walker MN 56484