



MLS 7097366 Residential

\$249,900

1,296 sq ft
2 bedrooms
1 baths

15038 210th Street
Little Falls MN 56345

Status: Active

Description:

This 2-bedroom, 1 bathroom home offers an opportunity for future updates. Nearly 6 acres just outside Little Falls featuring a 30x60 insulated, heated shop/garage with concrete floors, electrical service, and heat in the front portion of the building. Additional to this building is an attached 20x40 workshop area with a ventilation system ideal for woodworking, painting or even extra storage. 4 of the nearly 6 acres is fenced is with a stable and lean-to area. Excellent opportunity for hobbyists, or buyers seeking acreage with substantial outbuilding space.

Additional Details:

Year Built	1800
Lot Acres	5.78
Lot Dimensions	347x724
Garage Stalls	4
School District	482
Taxes	\$1,328
Taxes with Assessments	\$1,328
Tax Year	2025

Additional Features:

Fuel: Natural Gas, Propane **Heat:** Forced Air

Driving Directions:

From 371, Head West on 115, Turn Left (south) on Grouse Rd, continue approximately a half mile to 210th Street, turn Left (east), Property is the first corner lot on 210th Street.



Listed By:
Premier Real Estate Services

Affinity Real Estate Inc. participates in the Regional Multiple Listing Service of Minnesota, Inc Broker Reciprocity (sm) program, allowing us to display other broker's listings on our website. All properties are subject to prior sale, change or withdrawal.



Call Affinity Real Estate

218-237-3333

info@affinityrealestate.com



Affinity Real Estate - 600 Park Avenue South - Park Rapids MN 56470



website: www.AffinityRealEstate.com | email: info@affinityrealestate.com | office: 218-237-3333 | fax: 218-237-3377

Affinity
REAL ESTATE INC

\$249,900
MLS 7097366 Residential
15038 210th Street
Little Falls MN 56345



website: www.AffinityRealEstate.com | email: info@affinityrealestate.com | office: 218-237-3333 | fax:218-237-3377

Affinity
REAL ESTATE INC

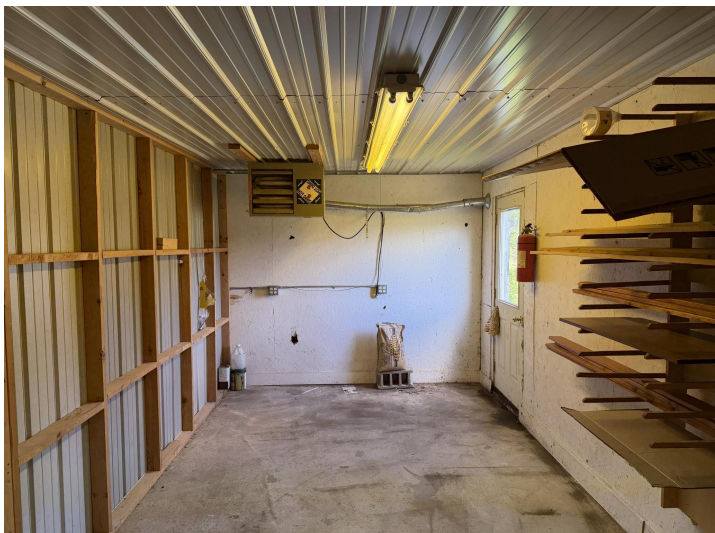
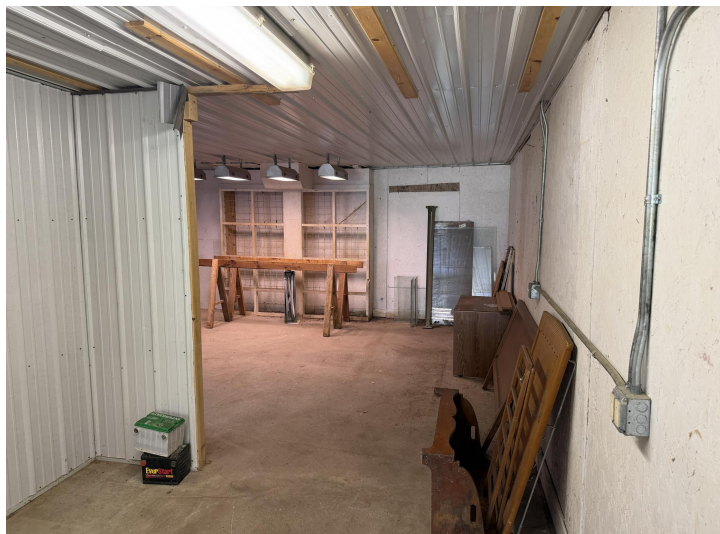
\$249,900
MLS 7097366 Residential
15038 210th Street
Little Falls MN 56345



website: www.AffinityRealEstate.com | email: info@affinityrealestate.com | office: 218-237-3333 | fax:218-237-3377



\$249,900
MLS 7097366 Residential
15038 210th Street
Little Falls MN 56345



website: www.AffinityRealEstate.com | email: info@affinityrealestate.com | office: 218-237-3333 | fax:218-237-3377



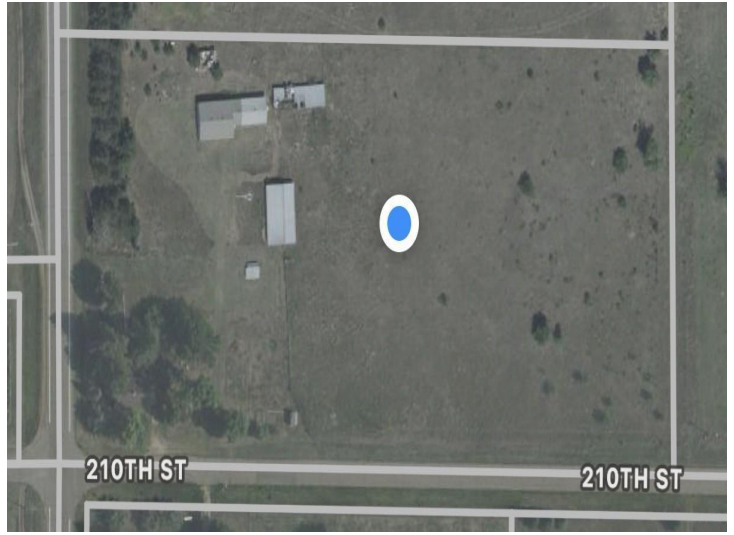
\$249,900
MLS 7097366 Residential
15038 210th Street
Little Falls MN 56345



website: www.AffinityRealEstate.com | email: info@affinityrealestate.com | office: 218-237-3333 | fax:218-237-3377



\$249,900
MLS 7097366 Residential
15038 210th Street
Little Falls MN 56345



website: www.AffinityRealEstate.com | email: info@affinityrealestate.com | office: 218-237-3333 | fax:218-237-3377



\$249,900
MLS 7097366 Residential
15038 210th Street
Little Falls MN 56345