



MLS 7097545 Residential

**\$249,900**

2,136 sq ft  
2 bedrooms  
2 baths

25651 Alwood Road  
Blackduck MN 56630

Status: Active

**Description:**

Welcome home to this 2 bedroom, 2 bathroom property with plenty of outdoor space to enjoy. Fresh interior paint and a new forced-air furnace provide peace of mind and a move-in-ready feel. The main floor features an open floor plan with a dining area that has a patio door that walks out to the back deck, a full bath and large primary bedroom. Lower level has a second living area, kitchenette, 3/4 bath laundry and the 2nd bedroom. Outside, you'll find a double attached garage, two storage sheds, and a beautiful park-like yard featuring mature apple trees, plenty of room to roam, and a cozy fire ring area.

**Additional Details:**

Year Built	1977
Lot Acres	1.56
Lot Dimensions	200x340
Garage Stalls	2
School District	32
Taxes	\$2,074
Taxes with Assessments	\$2,074
Tax Year	2025

**Additional Features:**

**Basement:** Full **Fuel:** Electric, Propane, Wood **Garage:** 2 **Heat:** Baseboard, Ductless Mini-Split, Forced Air, Fireplace(s), Wood Stove  
**Sewer:** Mound Septic, Private Sewer **Water:** Private **Air Conditioning:** Ductless Mini-Split

**Driving Directions:**

From Blackduck, go East on Alwood Rd to home on left



Listed By:  
218 Real Estate

Affinity Real Estate Inc. participates in the Regional Multiple Listing Service of Minnesota, Inc Broker Reciprocity (sm) program, allowing us to display other broker's listings on our website. All properties are subject to prior sale, change or withdrawal.



**Call Affinity Real Estate**

**218-237-3333**

**info@affinityrealestate.com**



**Affinity Real Estate - 600 Park Avenue South - Park Rapids MN 56470**



website: [www.AffinityRealEstate.com](http://www.AffinityRealEstate.com) | email: [info@affinityrealestate.com](mailto:info@affinityrealestate.com) | office: 218-237-3333 | fax:218-237-3377

**Affinity**  
REAL ESTATE INC

**\$249,900**  
MLS 7097545 Residential  
25651 Alvwood Road  
Blackduck MN 56630



website: [www.AffinityRealEstate.com](http://www.AffinityRealEstate.com) | email: [info@affinityrealestate.com](mailto:info@affinityrealestate.com) | office: 218-237-3333 | fax:218-237-3377

**Affinity**  
REAL ESTATE INC

**\$249,900**  
MLS 7097545 Residential  
25651 Alvwood Road  
Blackduck MN 56630



website: [www.AffinityRealEstate.com](http://www.AffinityRealEstate.com) | email: [info@affinityrealestate.com](mailto:info@affinityrealestate.com) | office: 218-237-3333 | fax: 218-237-3377

**Affinity**  
REAL ESTATE INC

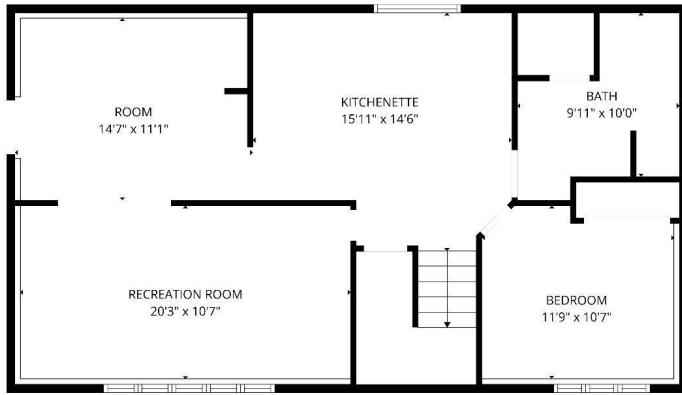
**\$249,900**  
MLS 7097545 Residential  
25651 Alvwood Road  
Blackduck MN 56630



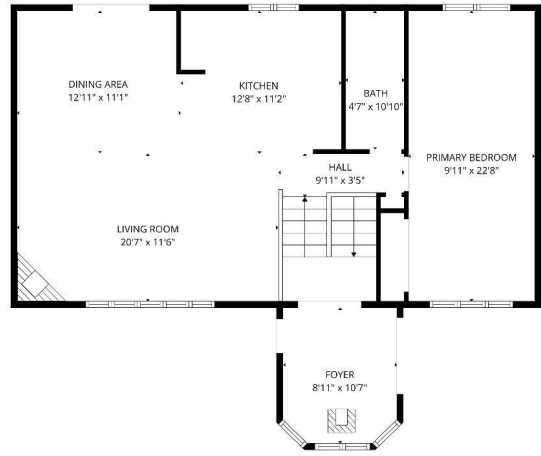
website: [www.AffinityRealEstate.com](http://www.AffinityRealEstate.com) | email: [info@affinityrealestate.com](mailto:info@affinityrealestate.com) | office: 218-237-3333 | fax:218-237-3377



**\$249,900**  
MLS 7097545 Residential  
25651 Alvwood Road  
Blackduck MN 56630



FLOOR PLAN CREATED BY C.BECKGA APP. MEASUREMENTS DERIVED HIGHLY RELIABLE BUT NOT GUARANTEED



FLOOR PLAN CREATED BY C.BECKGA APP. MEASUREMENTS DERIVED HIGHLY RELIABLE BUT NOT GUARANTEED

website: [www.AffinityRealEstate.com](http://www.AffinityRealEstate.com) | email: [info@affinityrealestate.com](mailto:info@affinityrealestate.com) | office: 218-237-3333 | fax: 218-237-3377



**\$249,900**  
 MLS 7097545 Residential  
 25651 Alwood Road  
 Blackduck MN 56630