



MLS 7097560 Lake Home

\$369,900

1,260 sq ft
3 bedrooms
2 baths

39806 Pine Island Point Trail
Browerville MN 56438

Waterfront: Pine Island Lake (Fawn
Lake Twp.)

Status: Active

Description:

Enjoy the best of Minnesota lake living in this beautifully finished 3-bedroom, 1.5-bath home on Pine Island Lake in the peaceful Sylvan Shores community, just two hours from the Twin Cities, 30 minutes from Brainerd, and 15 minutes from popular lakeside bars/restaurants on Lake Alexander. Featuring an open-concept layout, vaulted ceilings, knotty pine tongue-and-groove walls, a finished porch, and an outdoor deck, this turnkey property comes nearly fully furnished and comfortably sleeps up to nine guests. Efficient in-floor electric heat and a smart thermostat provide year-round comfort and convenience. The included roll-in/roll-out dock offers easy access to Pine Island Lake, where the limited number of homes creates a private, uncrowded setting perfect for swimming, fishing, and relaxing. Sylvan Shores residents enjoy exceptional amenities, including a clubhouse, in-ground pool, tennis and basketball courts, sand volleyball, playground, sandy beach, and picnic areas. Plus, several premier Brainerd-area golf courses are just a short drive away. Whether you're looking for a year-round home, vacation getaway, or low-maintenance lake retreat, this move-in-ready Northwoods cabin offers outstanding value and an unbeatable lakeside lifestyle.

Additional Details:

Year Built	2003
Lot Acres	0.43
Lot Dimensions	135x183x55x272
School District	2170
Taxes	\$2,656
Taxes with Assessments	\$2,656
Tax Year	2025

Additional Features:

Fuel: Electric **Heat:** In-Floor Heating

Driving Directions:

Hwy 10 Lincoln west on County #7 to left on Cty #26 .03 miles to left on Cty #17 .09 mile to R on Pacer to L. Pine Island Point Drive left on Pine Island Point Ln and R. Pine Island Point Trail. 39806



Listed By:
Twin Cities Real Estate Group

Affinity Real Estate Inc. participates in the Regional Multiple Listing Service of Minnesota, Inc Broker Reciprocity (sm) program, allowing us to display other broker's listings on our website. All properties are subject to prior sale, change or withdrawal.



Call Affinity Real Estate

218-237-3333

info@affinityrealestate.com



Affinity Real Estate - 600 Park Avenue South - Park Rapids MN 56470



website: www.AffinityRealEstate.com | email: info@affinityrealestate.com | office: 218-237-3333 | fax:218-237-3377



\$369,900
MLS 7097560 Lake Home
39806 Pine Island Point Trail
Browerville MN 56438



website: www.AffinityRealEstate.com | email: info@affinityrealestate.com | office: 218-237-3333 | fax:218-237-3377



\$369,900
MLS 7097560 Lake Home
39806 Pine Island Point Trail
Browerville MN 56438



website: www.AffinityRealEstate.com | email: info@affinityrealestate.com | office: 218-237-3333 | fax:218-237-3377

Affinity
REAL ESTATE INC

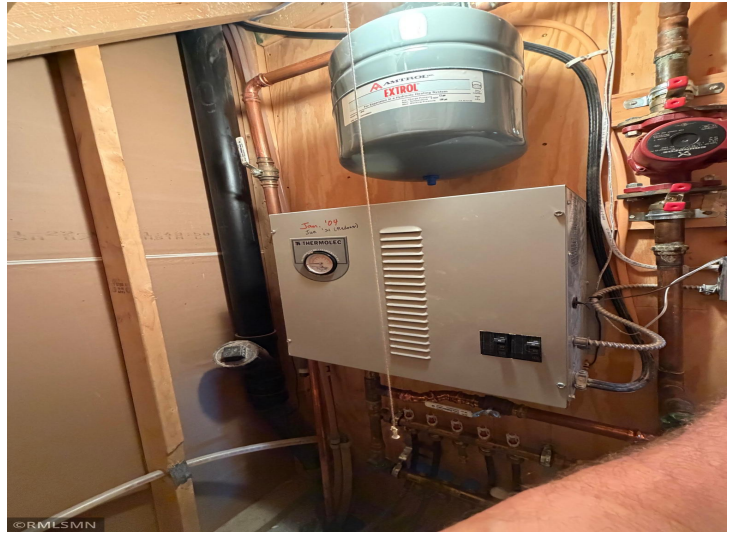
\$369,900
MLS 7097560 Lake Home
39806 Pine Island Point Trail
Browerville MN 56438



website: www.AffinityRealEstate.com | email: info@affinityrealestate.com | office: 218-237-3333 | fax: 218-237-3377

Affinity
REAL ESTATE INC

\$369,900
MLS 7097560 Lake Home
39806 Pine Island Point Trail
Browerville MN 56438



website: www.AffinityRealEstate.com | email: info@affinityrealestate.com | office: 218-237-3333 | fax:218-237-3377



\$369,900
MLS 7097560 Lake Home
39806 Pine Island Point Trail
Browerville MN 56438



website: www.AffinityRealEstate.com | email: info@affinityrealestate.com | office: 218-237-3333 | fax:218-237-3377



\$369,900
MLS 7097560 Lake Home
39806 Pine Island Point Trail
Browerville MN 56438