



MLS 7097650 Lake Land

\$109,900

Description:

Privacy and quiet surround this Third Lake property, offering over 300 feet of untouched shoreline and 3.8 wooded acres to build, camp, or simply unwind. A well-kept driveway guides you into the lot, where a meandering trail leads down to the water. Enjoy peaceful sunset views, mature forest, and the feeling of being away from it all—while still being less than five miles from Walker.

Additional Details:

Lot Acres	3.85
Lot Dimensions	313x547xirreg
School District	113
Taxes	\$396
Taxes with Assessments	\$396
Tax Year	2026

Additional Features:

Driving Directions:

From Walker, go west on State 34 to right on Evening Vista Trail to property straight ahead towards the left



Listed By:
Edina Realty, Inc.

Affinity Real Estate Inc. participates in the Regional Multiple Listing Service of Minnesota, Inc Broker Reciprocity (sm) program, allowing us to display other broker's listings on our website. All properties are subject to prior sale, change or withdrawal.



Call Affinity Real Estate

218-237-3333

info@affinityrealestate.com



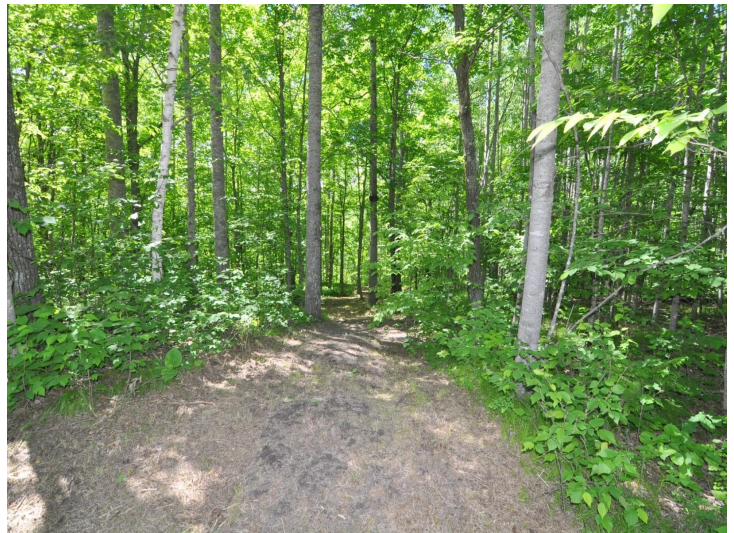
Affinity Real Estate - 600 Park Avenue South - Park Rapids MN 56470



website: www.AffinityRealEstate.com | email: info@affinityrealestate.com | office: 218-237-3333 | fax:218-237-3377



\$109,900
MLS 7097650 Lake Land
Lot 2 Evening Vista Trail
Akeley MN 56433



website: www.AffinityRealEstate.com | email: info@affinityrealestate.com | office: 218-237-3333 | fax:218-237-3377



\$109,900
MLS 7097650 Lake Land
Lot 2 Evening Vista Trail
Akeley MN 56433



website: www.AffinityRealEstate.com | email: info@affinityrealestate.com | office: 218-237-3333 | fax:218-237-3377



\$109,900
MLS 7097650 Lake Land
Lot 2 Evening Vista Trail
Akeley MN 56433