



MLS 7097787 Lake Land

\$1,750,000

Description:

DEVELOPERS DREAM - SPORTSMAN'S PARADISE! 235 acres of land with 2600 feet of prime commercial frontage on Hwy 210 in Baxter on the south end and 2300 feet of beautiful, undeveloped lakeshore on Lower Whipple Lake on the north end. Whether you're seeking a private retreat, a recreational paradise, or one of the best development opportunities available in Central Minnesota, this exceptional offering delivers unmatched possibilities. Create your dream legacy estate, world-class hunting compound, recreational gateway, or simply invest and let it appreciate, as this property is located in one of the fastest-growing, most desired locations in the Brainerd Lakes Area.

Additional Details:

Lot Acres	235
Lot Dimensions	3200x4800x4000x2600
School District	181
Taxes	\$8,316
Taxes with Assessments	\$8,316
Tax Year	2026

Additional Features:

Driving Directions:

From the intersection of Hwy 210 and 371 in Baxter, west on 210, approximately 3.5 miles to the sign and property on the North side of Hwy 210. (Across from Timberwood Dr.)



Listed By:
Kurilla Real Estate LTD

Affinity Real Estate Inc. participates in the Regional Multiple Listing Service of Minnesota, Inc Broker Reciprocity (sm) program, allowing us to display other broker's listings on our website. All properties are subject to prior sale, change or withdrawal.



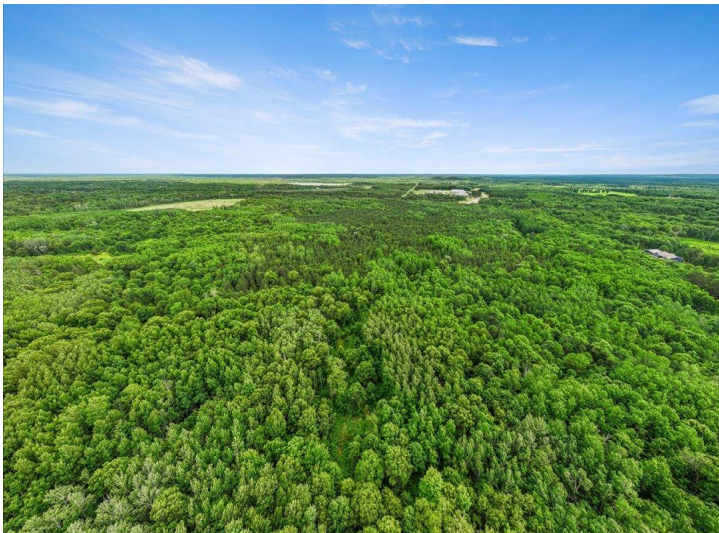
Call Affinity Real Estate

218-237-3333

info@affinityrealestate.com



Affinity Real Estate - 600 Park Avenue South - Park Rapids MN 56470



website: www.AffinityRealEstate.com | email: info@affinityrealestate.com | office: 218-237-3333 | fax:218-237-3377

Affinity
REAL ESTATE INC

\$1,750,000
MLS 7097787 Lake Land
TBD Hwy 210 W.
Baxter MN 56425



website: www.AffinityRealEstate.com | email: info@affinityrealestate.com | office: 218-237-3333 | fax:218-237-3377



\$1,750,000
MLS 7097787 Lake Land
TBD Hwy 210 W.
Baxter MN 56425



website: www.AffinityRealEstate.com | email: info@affinityrealestate.com | office: 218-237-3333 | fax:218-237-3377



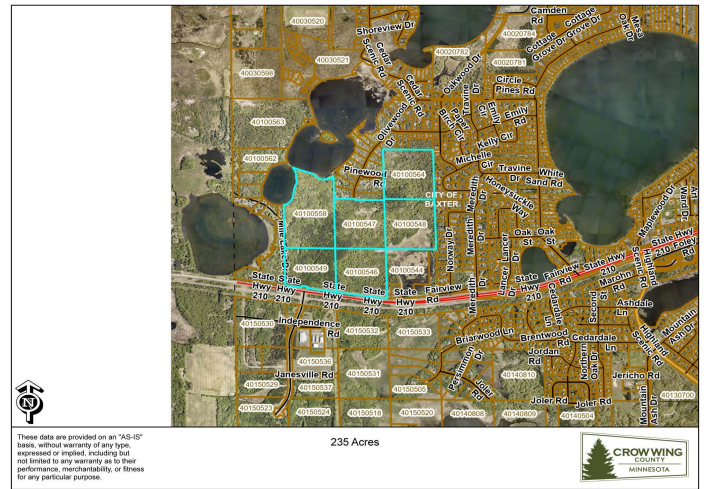
\$1,750,000
MLS 7097787 Lake Land
TBD Hwy 210 W.
Baxter MN 56425



website: www.AffinityRealEstate.com | email: info@affinityrealestate.com | office: 218-237-3333 | fax:218-237-3377



\$1,750,000
MLS 7097787 Lake Land
TBD Hwy 210 W.
Baxter MN 56425



website: www.AffinityRealEstate.com | email: info@affinityrealestate.com | office: 218-237-3333 | fax: 218-237-3377



\$1,750,000
 MLS 7097787 Lake Land
 TBD Hwy 210 W.
 Baxter MN 56425