



MLS 7097798 Land

\$139,900

38.63 Acres
Raw Land

TBD FS2564D
Remer MN 56672

Status: Active

Description:

Prime hunting ground. 38 plus acres surrounded by Chippewa Nation Forest from Oak Ridges to Ravines to Towering Red/White Pine this one has it all. This property offers a variety of wildlife including bear, deer, turkeys, & grouse to name a few. Many quality fishing lakes nearby. After a Day in the woods stop by the Anchorage Inn on Beautiful Lake Inguadona for a Burger & a Beverage a few minute drive away!

Additional Details:

Lot Acres	38.63
Lot Dimensions	1320x1320
School District	118
Taxes	\$538
Taxes with Assessments	\$538
Tax Year	2026

Additional Features:

Driving Directions:

From Longville go east on County 7 approx 4 miles to left on 32nd Ave/Cty 129, continue straight on Danens Drive NE for 2 miles to end of road and go right at dead end on FS2564D, follow road 1 mile to Y, go right at Y to property and sign on right.



Listed By:
North Country Properties LLC

Affinity Real Estate Inc. participates in the Regional Multiple Listing Service of Minnesota, Inc Broker Reciprocity (sm) program, allowing us to display other broker's listings on our website. All properties are subject to prior sale, change or withdrawal.



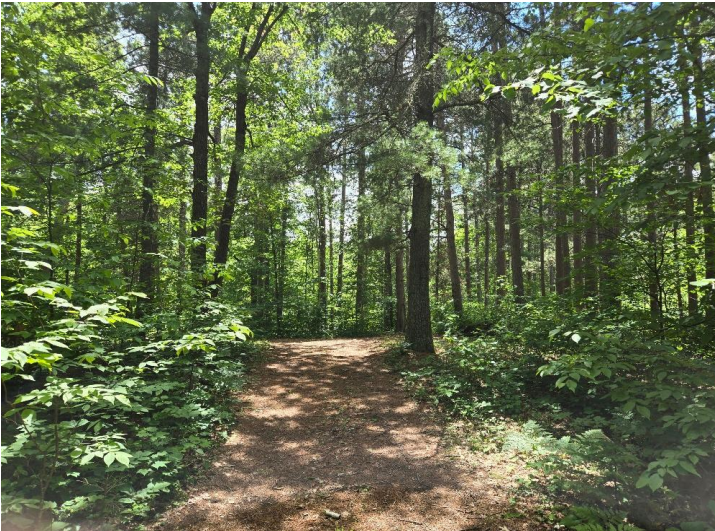
Call Affinity Real Estate

218-237-3333

info@affinityrealestate.com



Affinity Real Estate - 600 Park Avenue South - Park Rapids MN 56470



website: www.AffinityRealEstate.com | email: info@affinityrealestate.com | office: 218-237-3333 | fax:218-237-3377



\$139,900
MLS 7097798 Land
TBD FS2564D
Remer MN 56672



website: www.AffinityRealEstate.com | email: info@affinityrealestate.com | office: 218-237-3333 | fax:218-237-3377



\$139,900
MLS 7097798 Land
TBD FS2564D
Remer MN 56672