



MLS 7098025 Land

\$59,900

2.3 Acres
Subdivided

Tract B Maghan Road
Deerwood MN 56444

Status: Active

Description:

Wooded 2.3-acre parcel created through a recent lot split in the Bay Lake area. Conveniently located near the Crooked Lake Chain, Bay Lake, and Ruttger's Bay Lake Resort, with easy access to Crosby, Mille Lacs Lake, and the Brainerd Lakes Area. Enjoy proximity to year-round recreation, including boating, fishing, golf, mountain biking, snowmobiling, and more. Additional adjoining land is available.

Additional Details:

| | |
|------------------------|---------|
| Lot Acres | 2.3 |
| Lot Dimensions | 203x500 |
| School District | 181 |
| Taxes | \$158 |
| Taxes with Assessments | \$158 |
| Tax Year | 2026 |

Additional Features:

Driving Directions:

From Deerwood head South on Hwy-6 for 8.2 miles, turn right onto Maghan Trail for 1.1 miles, turn left onto Maghan Rd to property on your right.



Listed By:
Northland Sotheby's International Realty

Affinity Real Estate Inc. participates in the Regional Multiple Listing Service of Minnesota, Inc Broker Reciprocity (sm) program, allowing us to display other broker's listings on our website. All properties are subject to prior sale, change or withdrawal.



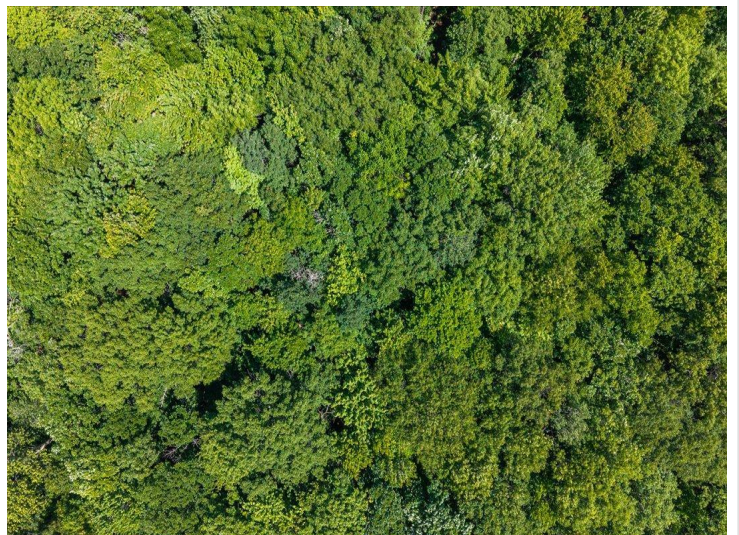
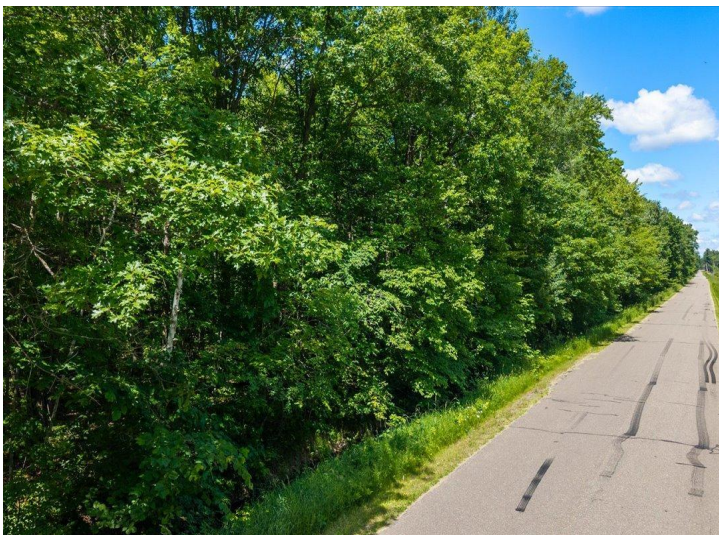
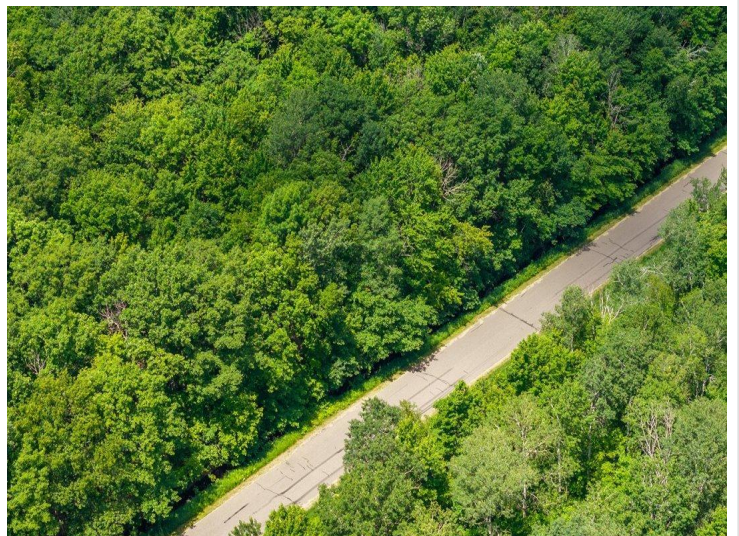
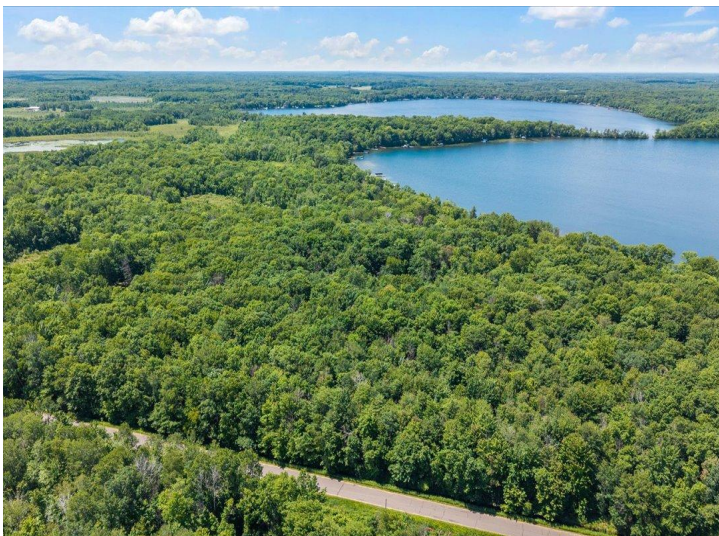
Call Affinity Real Estate

218-237-3333

info@affinityrealestate.com



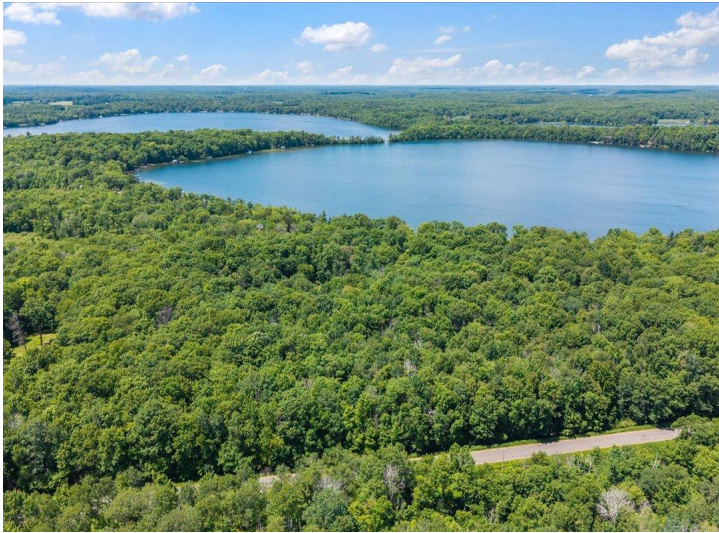
Affinity Real Estate - 600 Park Avenue South - Park Rapids MN 56470



website: www.AffinityRealEstate.com | email: info@affinityrealestate.com | office: 218-237-3333 | fax:218-237-3377



\$59,900
MLS 7098025 Land
Tract B Maghan Road
Deerwood MN 56444



website: www.AffinityRealEstate.com | email: info@affinityrealestate.com | office: 218-237-3333 | fax:218-237-3377



\$59,900
MLS 7098025 Land
Tract B Maghan Road
Deerwood MN 56444