



MLS 7098077 Commercial

\$449,995

20470 State 226
Park Rapids MN 56470

Status: Active

Description:

Welcome to The Dorset General Store and La Pasta Italian Eatery. After proudly serving you for 34 years, Kathy says she's ready to retire. This highly successful, dual-business offering serves as Dorset's foremost gathering place for breakfast, lunch, dinner, and convenience (grab-and-go) items. La Pasta is known for its inviting atmosphere, awesome food, great service and total consistency. Spacious at 3,236 finished square feet, all on one convenient level. The general store portion totals 1,380 sq ft while the restaurant is 1,856 sq ft. The indoor occupancy is rated for 85 patrons plus additional bonus capacity served on the outside patio, porch, and deck. This offering is spotless, extremely well cared for and perfectly positions a new buyer for continued success. Everything needed to run the business is included and in excellent condition. The real estate, equipment, fixtures, branding—all of it! Dorset Minnesota is located in the heart of our lake's community. Known as the restaurant capital of the world. A fun destination for our seasonal folks and a staple for the locals. Be sure to check out the video.

Additional Details:

Year Built	1920
Lot Acres	0.58
Lot Dimensions	87 x Irr
School District	309
Taxes	\$1,852
Taxes with Assessments	\$3,214
Tax Year	2026

Additional Features:

Basement: Block, Partial, Unfinished **Fuel:** Propane **Heat:** Forced Air **Sewer:** Private Sewer, Tank with Drainage Field **Water:** Drilled, Private, Well **Air Conditioning:** Central Air, Ductless Mini-Split, Wall Unit(s)

Driving Directions:

From the Dorset corner (State 226 at Hwy 34): Go North (1) mile to property on right.



Listed By:
Affinity Real Estate Inc.

Affinity Real Estate Inc. participates in the Regional Multiple Listing Service of Minnesota, Inc Broker Reciprocity (sm) program, allowing us to display other broker's listings on our website. All properties are subject to prior sale, change or withdrawal.



Call Affinity Real Estate

218-237-3333

info@affinityrealestate.com



Affinity Real Estate - 600 Park Avenue South - Park Rapids MN 56470



website: www.AffinityRealEstate.com | email: info@affinityrealestate.com | office: 218-237-3333 | fax:218-237-3377



\$449,995
MLS 7098077 Commercial
20470 State 226
Park Rapids MN 56470



website: www.AffinityRealEstate.com | email: info@affinityrealestate.com | office: 218-237-3333 | fax: 218-237-3377



\$449,995
MLS 7098077 Commercial
20470 State 226
Park Rapids MN 56470



website: www.AffinityRealEstate.com | email: info@affinityrealestate.com | office: 218-237-3333 | fax: 218-237-3377



\$449,995
MLS 7098077 Commercial
20470 State 226
Park Rapids MN 56470



website: www.AffinityRealEstate.com | email: info@affinityrealestate.com | office: 218-237-3333 | fax:218-237-3377



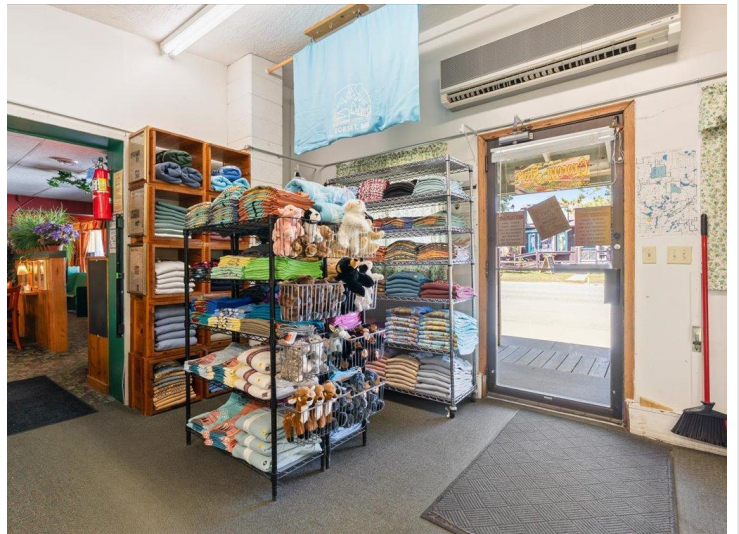
\$449,995
MLS 7098077 Commercial
20470 State 226
Park Rapids MN 56470



website: www.AffinityRealEstate.com | email: info@affinityrealestate.com | office: 218-237-3333 | fax: 218-237-3377

Affinity
REAL ESTATE INC

\$449,995
MLS 7098077 Commercial
20470 State 226
Park Rapids MN 56470



website: www.AffinityRealEstate.com | email: info@affinityrealestate.com | office: 218-237-3333 | fax: 218-237-3377

Affinity
REAL ESTATE INC

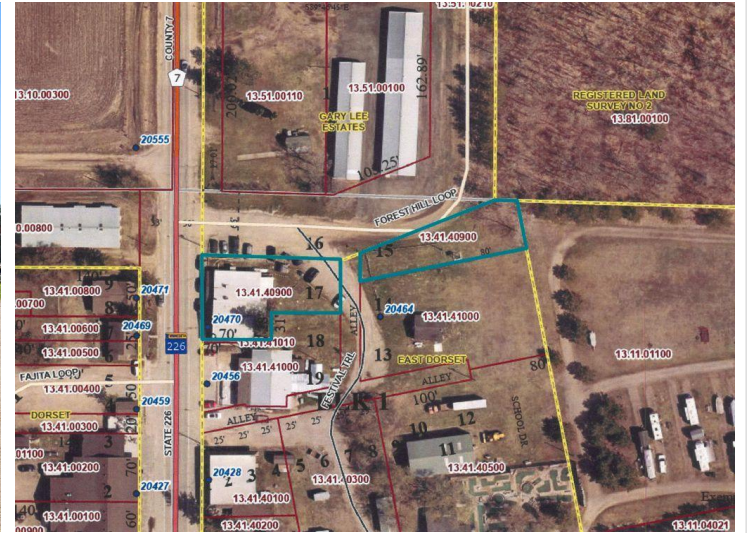
\$449,995
MLS 7098077 Commercial
20470 State 226
Park Rapids MN 56470



website: www.AffinityRealEstate.com | email: info@affinityrealestate.com | office: 218-237-3333 | fax:218-237-3377

Affinity
REAL ESTATE INC

\$449,995
MLS 7098077 Commercial
20470 State 226
Park Rapids MN 56470



website: www.AffinityRealEstate.com | email: info@affinityrealestate.com | office: 218-237-3333 | fax:218-237-3377



\$449,995
MLS 7098077 Commercial
20470 State 226
Park Rapids MN 56470