



MLS 7098152 Residential

\$1,295,000

3,000 sq ft
2 bedrooms
3 baths

18000 US-10 Highway
Hawley MN 56549

Status: Active

Description:

One-of-a-kind aviation estate on 11.43 deeded acres outside Hawley, MN, featuring a private 3,250' x 100' runway - a true rarity in this market. The steel-built 50' x 106' hangar is fully insulated with two drive-through doors, an RV door sized for a Class A motorhome, easily removable demising walls to open up the space, new LED lighting (2025), updated office flooring (2024), updated bathroom plumbing, and a private office with bathroom and shower.

The home offers 2 bedrooms and 3 bathrooms on a 2002 build, set on a tree-lined lot for privacy. A 3-car oversized garage is fully finished and heated with floor heat, with an 18' x 8' and 10' x 8' overhead door setup and a new storm door on the garage walk-through. Kitchen appliances have all been updated, and the fireplace was converted to electric in 2025. Shingles on both the house and the hangar overhang were replaced in 2023.

Storage doesn't stop there: a 22' x 28' detached garage and a 32' x 40' Foltz building with attached carport (garage door seals recently replaced) round out the property, with all outbuilding concrete 5-6" thick and steel siding throughout. Whether you're storing planes, classic cars, an RV, or running a business, this property is built to do it all. Schedule a private showing today.

Additional Details:

Year Built	2002
Lot Acres	11.43
Lot Dimensions	tbd
Garage Stalls	3
School District	150
Taxes	\$6,802
Taxes with Assessments	\$6,848
Tax Year	2025

Additional Features:

Basement: Crawl Space **Fuel:** Natural Gas, Other **Garage:** 3 **Heat:** Dual Fuel/Off Peak, Other **Sewer:** Holding Tank, Tank with Drainage Field **Water:** Well **Air Conditioning:** Central Air

Driving Directions:

mads



Listed By:
Raboin Realty

Affinity Real Estate Inc. participates in the Regional Multiple Listing Service of Minnesota, Inc Broker Reciprocity (sm) program, allowing us to display other broker's listings on our website. All properties are subject to prior sale, change or withdrawal.



Call Affinity Real Estate

218-237-3333

info@affinityrealestate.com



Affinity Real Estate - 600 Park Avenue South - Park Rapids MN 56470



website: www.AffinityRealEstate.com | email: info@affinityrealestate.com | office: 218-237-3333 | fax:218-237-3377



\$1,295,000
MLS 7098152 Residential
18000 US-10 Highway
Hawley MN 56549



website: www.AffinityRealEstate.com | email: info@affinityrealestate.com | office: 218-237-3333 | fax:218-237-3377



\$1,295,000
MLS 7098152 Residential
18000 US-10 Highway
Hawley MN 56549



website: www.AffinityRealEstate.com | email: info@affinityrealestate.com | office: 218-237-3333 | fax: 218-237-3377

Affinity
REAL ESTATE INC

\$1,295,000
MLS 7098152 Residential
18000 US-10 Highway
Hawley MN 56549



website: www.AffinityRealEstate.com | email: info@affinityrealestate.com | office: 218-237-3333 | fax:218-237-3377

Affinity
REAL ESTATE INC

\$1,295,000
MLS 7098152 Residential
18000 US-10 Highway
Hawley MN 56549



website: www.AffinityRealEstate.com | email: info@affinityrealestate.com | office: 218-237-3333 | fax:218-237-3377



\$1,295,000
MLS 7098152 Residential
18000 US-10 Highway
Hawley MN 56549



website: www.AffinityRealEstate.com | email: info@affinityrealestate.com | office: 218-237-3333 | fax: 218-237-3377

Affinity
REAL ESTATE INC

\$1,295,000
MLS 7098152 Residential
18000 US-10 Highway
Hawley MN 56549



website: www.AffinityRealEstate.com | email: info@affinityrealestate.com | office: 218-237-3333 | fax:218-237-3377

Affinity
REAL ESTATE INC

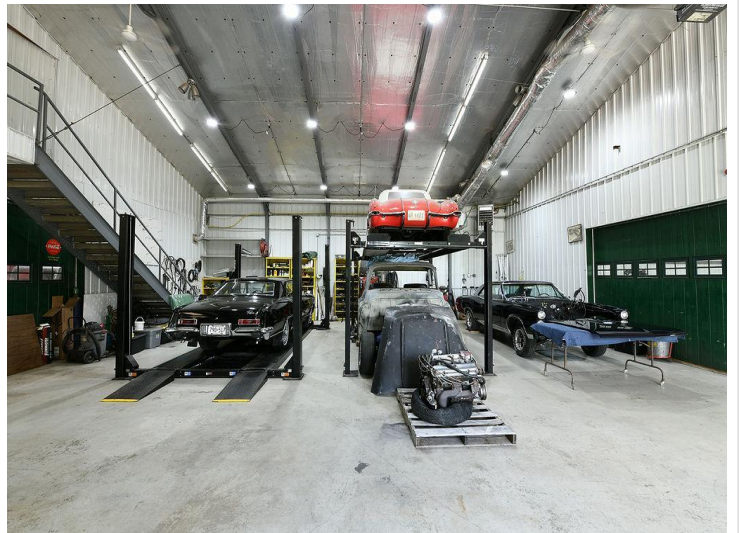
\$1,295,000
MLS 7098152 Residential
18000 US-10 Highway
Hawley MN 56549



website: www.AffinityRealEstate.com | email: info@affinityrealestate.com | office: 218-237-3333 | fax: 218-237-3377

Affinity
REAL ESTATE INC

\$1,295,000
MLS 7098152 Residential
18000 US-10 Highway
Hawley MN 56549



website: www.AffinityRealEstate.com | email: info@affinityrealestate.com | office: 218-237-3333 | fax: 218-237-3377

Affinity
REAL ESTATE INC

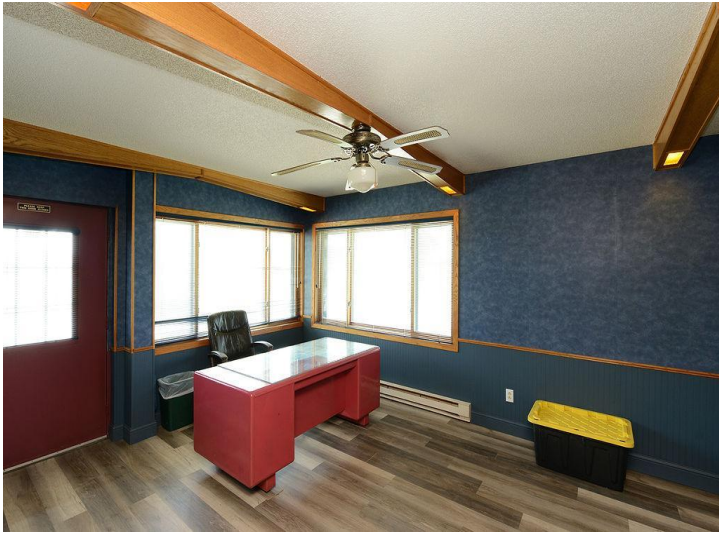
\$1,295,000
MLS 7098152 Residential
18000 US-10 Highway
Hawley MN 56549



website: www.AffinityRealEstate.com | email: info@affinityrealestate.com | office: 218-237-3333 | fax:218-237-3377

Affinity
REAL ESTATE INC

\$1,295,000
MLS 7098152 Residential
18000 US-10 Highway
Hawley MN 56549



website: www.AffinityRealEstate.com | email: info@affinityrealestate.com | office: 218-237-3333 | fax: 218-237-3377

Affinity
REAL ESTATE INC

\$1,295,000
MLS 7098152 Residential
18000 US-10 Highway
Hawley MN 56549



website: www.AffinityRealEstate.com | email: info@affinityrealestate.com | office: 218-237-3333 | fax:218-237-3377



\$1,295,000
MLS 7098152 Residential
18000 US-10 Highway
Hawley MN 56549