



MLS 7098171 Residential

\$348,000

3,550 sq ft
3 bedrooms
4 baths

805 Pleasant Drive
Ada MN 56510

Status: Active

Description:

This beautifully built, one owner, traditional style 2 story with stunning oak flooring & woodwork is ready for new ownership.

The main floor living space has so many beautiful windows, french doors that lead into a sitting room with a fireplace, & a lovely kitchen & a formal dining room. The sellers took space from the garage to create a larger laundry room with a shower & converted the original laundry into a flex room currently used as a perfect sewing room.

Head up the beautiful staircase to 3 bedrooms with great closet space & a huge primary wing.

The basement has plenty of living space & storage galore. There is an egress window if you wanted to utilize the back office as a bedroom, the space is there!

The attached garage is now a heated & finished single stall, but don't miss heading out to the cute patio that leads to the also heated detached 1.5 stall garage.

Such a sweet home in a great little town. We can't wait for you to see it.

Additional Details:

Year Built	1996
Lot Acres	0.298
Lot Dimensions	Irregular
Garage Stalls	2
School District	2854
Taxes	\$3,655
Taxes with Assessments	\$3,820
Tax Year	2026

Additional Features:

Basement: Finished **Fuel:** Electric, Natural Gas **Garage:** 2 **Heat:** Forced Air **Sewer:** City Sewer/Connected **Water:** City Water/Connected **Air Conditioning:** Central Air

Driving Directions:

N side of county 200, west off 9 St E



Listed By:
RE/MAX Legacy Realty

Affinity Real Estate Inc. participates in the Regional Multiple Listing Service of Minnesota, Inc Broker Reciprocity (sm) program, allowing us to display other broker's listings on our website. All properties are subject to prior sale, change or withdrawal.



Call Affinity Real Estate

218-237-3333

info@affinityrealestate.com



Affinity Real Estate - 600 Park Avenue South - Park Rapids MN 56470



website: www.AffinityRealEstate.com | email: info@affinityrealestate.com | office: 218-237-3333 | fax:218-237-3377

Affinity
REAL ESTATE INC

\$348,000
MLS 7098171 Residential
805 Pleasant Drive
Ada MN 56510



website: www.AffinityRealEstate.com | email: info@affinityrealestate.com | office: 218-237-3333 | fax: 218-237-3377

Affinity
REAL ESTATE INC

\$348,000
MLS 7098171 Residential
805 Pleasant Drive
Ada MN 56510



website: www.AffinityRealEstate.com | email: info@affinityrealestate.com | office: 218-237-3333 | fax:218-237-3377

Affinity
REAL ESTATE INC

\$348,000
MLS 7098171 Residential
805 Pleasant Drive
Ada MN 56510



website: www.AffinityRealEstate.com | email: info@affinityrealestate.com | office: 218-237-3333 | fax:218-237-3377

Affinity
REAL ESTATE INC

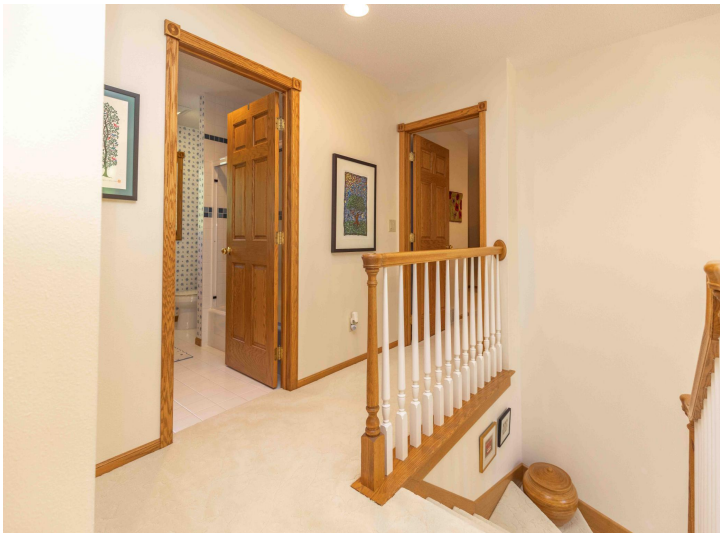
\$348,000
MLS 7098171 Residential
805 Pleasant Drive
Ada MN 56510



website: www.AffinityRealEstate.com | email: info@affinityrealestate.com | office: 218-237-3333 | fax: 218-237-3377

Affinity
REAL ESTATE INC

\$348,000
MLS 7098171 Residential
805 Pleasant Drive
Ada MN 56510



website: www.AffinityRealEstate.com | email: info@affinityrealestate.com | office: 218-237-3333 | fax:218-237-3377

Affinity
REAL ESTATE INC

\$348,000
MLS 7098171 Residential
805 Pleasant Drive
Ada MN 56510



website: www.AffinityRealEstate.com | email: info@affinityrealestate.com | office: 218-237-3333 | fax:218-237-3377

Affinity
REAL ESTATE INC

\$348,000
MLS 7098171 Residential
805 Pleasant Drive
Ada MN 56510



website: www.AffinityRealEstate.com | email: info@affinityrealestate.com | office: 218-237-3333 | fax: 218-237-3377

Affinity
REAL ESTATE INC

\$348,000
MLS 7098171 Residential
805 Pleasant Drive
Ada MN 56510



website: www.AffinityRealEstate.com | email: info@affinityrealestate.com | office: 218-237-3333 | fax: 218-237-3377

Affinity
REAL ESTATE INC

\$348,000
MLS 7098171 Residential
805 Pleasant Drive
Ada MN 56510



website: www.AffinityRealEstate.com | email: info@affinityrealestate.com | office: 218-237-3333 | fax:218-237-3377

Affinity
REAL ESTATE INC

\$348,000
MLS 7098171 Residential
805 Pleasant Drive
Ada MN 56510