



MLS 7098347 Residential

**\$464,900**

3,103 sq ft  
5 bedrooms  
4 baths

14434 Cottage Grove Drive  
Baxter MN 56425

Status: Active

**Description:**

Welcome to this spacious 5-bedroom, 4-bath home in the heart of Baxter, offering the perfect combination of comfort, functionality, and location. Thoughtfully designed with an ideal layout for everyday living and entertaining, this home features inviting living spaces and seamless flow throughout. Step outside and enjoy the exceptional outdoor entertaining areas, perfect for gathering with family and friends. Recent improvements include a new roof, siding, furnace, and shed, providing added value and peace of mind for years to come. Located within walking distance of Whipple beach, bike trails, and local lakes, you'll have endless opportunities to enjoy the best of the Brainerd Lakes Area lifestyle. Don't miss your chance to own this Baxter gem—schedule your showing today!

**Additional Details:**

Year Built	1999
Lot Acres	0.48
Lot Dimensions	104x200
Garage Stalls	3
School District	181
Taxes	\$3,757
Taxes with Assessments	\$3,782
Tax Year	2026

**Additional Features:**

**Fuel:** Natural Gas **Heat:** Forced Air

**Driving Directions:**

From the Intersection of 371 and 210 go West on 210 to a right onto Memorywood Drive to a left onto Cottage Grove Terrace to a Right onto Cottage Grove Drive to the property on the right.



Listed By:  
Edina Realty, Inc.

Affinity Real Estate Inc. participates in the Regional Multiple Listing Service of Minnesota, Inc Broker Reciprocity (sm) program, allowing us to display other broker's listings on our website. All properties are subject to prior sale, change or withdrawal.



**Call Affinity Real Estate**

**218-237-3333**

**info@affinityrealestate.com**



**Affinity Real Estate - 600 Park Avenue South - Park Rapids MN 56470**



website: [www.AffinityRealEstate.com](http://www.AffinityRealEstate.com) | email: [info@affinityrealestate.com](mailto:info@affinityrealestate.com) | office: 218-237-3333 | fax: 218-237-3377

**Affinity**  
REAL ESTATE INC

**\$464,900**  
MLS 7098347 Residential  
14434 Cottage Grove Drive  
Baxter MN 56425



website: [www.AffinityRealEstate.com](http://www.AffinityRealEstate.com) | email: [info@affinityrealestate.com](mailto:info@affinityrealestate.com) | office: 218-237-3333 | fax:218-237-3377



**\$464,900**  
MLS 7098347 Residential  
14434 Cottage Grove Drive  
Baxter MN 56425



website: [www.AffinityRealEstate.com](http://www.AffinityRealEstate.com) | email: [info@affinityrealestate.com](mailto:info@affinityrealestate.com) | office: 218-237-3333 | fax:218-237-3377

**Affinity**  
REAL ESTATE INC

**\$464,900**  
MLS 7098347 Residential  
14434 Cottage Grove Drive  
Baxter MN 56425



website: [www.AffinityRealEstate.com](http://www.AffinityRealEstate.com) | email: [info@affinityrealestate.com](mailto:info@affinityrealestate.com) | office: 218-237-3333 | fax:218-237-3377

**Affinity**  
REAL ESTATE INC

**\$464,900**  
MLS 7098347 Residential  
14434 Cottage Grove Drive  
Baxter MN 56425



website: [www.AffinityRealEstate.com](http://www.AffinityRealEstate.com) | email: [info@affinityrealestate.com](mailto:info@affinityrealestate.com) | office: 218-237-3333 | fax:218-237-3377

**Affinity**  
REAL ESTATE INC

**\$464,900**  
MLS 7098347 Residential  
14434 Cottage Grove Drive  
Baxter MN 56425



website: [www.AffinityRealEstate.com](http://www.AffinityRealEstate.com) | email: [info@affinityrealestate.com](mailto:info@affinityrealestate.com) | office: 218-237-3333 | fax:218-237-3377

**Affinity**  
REAL ESTATE INC

**\$464,900**  
MLS 7098347 Residential  
14434 Cottage Grove Drive  
Baxter MN 56425



website: [www.AffinityRealEstate.com](http://www.AffinityRealEstate.com) | email: [info@affinityrealestate.com](mailto:info@affinityrealestate.com) | office: 218-237-3333 | fax:218-237-3377

**Affinity**  
REAL ESTATE INC

**\$464,900**  
MLS 7098347 Residential  
14434 Cottage Grove Drive  
Baxter MN 56425



website: [www.AffinityRealEstate.com](http://www.AffinityRealEstate.com) | email: [info@affinityrealestate.com](mailto:info@affinityrealestate.com) | office: 218-237-3333 | fax:218-237-3377



**\$464,900**  
MLS 7098347 Residential  
14434 Cottage Grove Drive  
Baxter MN 56425



website: [www.AffinityRealEstate.com](http://www.AffinityRealEstate.com) | email: [info@affinityrealestate.com](mailto:info@affinityrealestate.com) | office: 218-237-3333 | fax:218-237-3377

**Affinity**  
REAL ESTATE INC

**\$464,900**  
MLS 7098347 Residential  
14434 Cottage Grove Drive  
Baxter MN 56425



website: [www.AffinityRealEstate.com](http://www.AffinityRealEstate.com) | email: [info@affinityrealestate.com](mailto:info@affinityrealestate.com) | office: 218-237-3333 | fax: 218-237-3377



**\$464,900**  
 MLS 7098347 Residential  
 14434 Cottage Grove Drive  
 Baxter MN 56425



FIGURE 1  
GROSS INTERNAL AREA  
FLOOR 1: BRIDGE SQUARE S. 100 SQ. FEET, FLOOR 2: 102 SQ. FT.  
EXCLUDED AREA: 0 SQ. FT. (0.0%)  
TOTAL: 202 SQ. FT.  
SIZE AND DIMENSIONS ARE APPROXIMATE. ACTUAL MAY VARY.



FIGURE 2  
GROSS INTERNAL AREA  
FLOOR 1: BRIDGE SQUARE NORTH FLOOR 2: 112 SQ. FT.  
EXCLUDED AREA: 0 SQ. FT. (0.0%)  
TOTAL: 212 SQ. FT.  
SIZE AND DIMENSIONS ARE APPROXIMATE. ACTUAL MAY VARY.

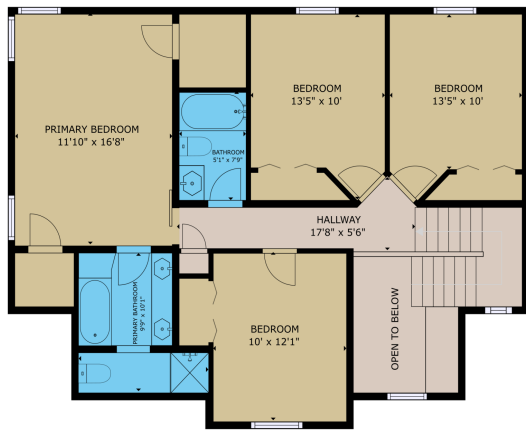
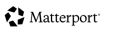


FIGURE 3  
GROSS INTERNAL AREA  
FLOOR 1: BRIDGE SQUARE S. 100 SQ. FEET, FLOOR 2: 102 SQ. FT.  
EXCLUDED AREA: 0 SQ. FT. (0.0%)  
TOTAL: 202 SQ. FT.  
SIZE AND DIMENSIONS ARE APPROXIMATE. ACTUAL MAY VARY.



website: [www.AffinityRealEstate.com](http://www.AffinityRealEstate.com) | email: [info@affinityrealestate.com](mailto:info@affinityrealestate.com) | office: 218-237-3333 | fax: 218-237-3377



**\$464,900**  
MLS 7098347 Residential  
14434 Cottage Grove Drive  
Baxter MN 56425