



MLS 7098678 Lake Land

\$199,900

Description:

Lake Lot on Little Jessie Lake! This lake lot has cleared park like areas with heavily wooded trails on the south side. The shoreline is firm sand. There is some slight elevation to the lake with a viewing corridor of Little Jessie Lake. The lot is directly off the blacktop and near many great fishing lakes, ATV trails and snowmobile trails. some other amenities nearby are dining, gas stations, hospitals and groceries within 30 miles. With 3.4 acres and 256' of shoreline, this lot is spacious and can accommodate a nice size cabin or home and outbuildings for your toys!

Additional Details:

Lot Acres	3.4
Lot Dimensions	382.45x256x512.9x400
School District	317
Taxes	(unreported)
Taxes with Assessments	(unreported)
Tax Year	2025

Additional Features:

Driving Directions:

From Talmoon S onto highway 6 to R onto Cr 35. Go 2.3 miles to Property on L



Listed By:
MN LAKESHORE PROPERTIES/MN UP NORTH
REALTY

Affinity Real Estate Inc. participates in the Regional Multiple Listing Service of Minnesota, Inc Broker Reciprocity (sm) program, allowing us to display other broker's listings on our website. All properties are subject to prior sale, change or withdrawal.



Call Affinity Real Estate

218-237-3333

info@affinityrealestate.com



Affinity Real Estate - 600 Park Avenue South - Park Rapids MN 56470



website: www.AffinityRealEstate.com | email: info@affinityrealestate.com | office: 218-237-3333 | fax:218-237-3377



\$199,900
MLS 7098678 Lake Land
Parcel B County Road 35
Deer River MN 56636



website: www.AffinityRealEstate.com | email: info@affinityrealestate.com | office: 218-237-3333 | fax:218-237-3377



\$199,900
MLS 7098678 Lake Land
Parcel B County Road 35
Deer River MN 56636



website: www.AffinityRealEstate.com | email: info@affinityrealestate.com | office: 218-237-3333 | fax:218-237-3377



\$199,900
MLS 7098678 Lake Land
Parcel B County Road 35
Deer River MN 56636



website: www.AffinityRealEstate.com | email: info@affinityrealestate.com | office: 218-237-3333 | fax:218-237-3377



\$199,900
MLS 7098678 Lake Land
Parcel B County Road 35
Deer River MN 56636



website: www.AffinityRealEstate.com | email: info@affinityrealestate.com | office: 218-237-3333 | fax:218-237-3377



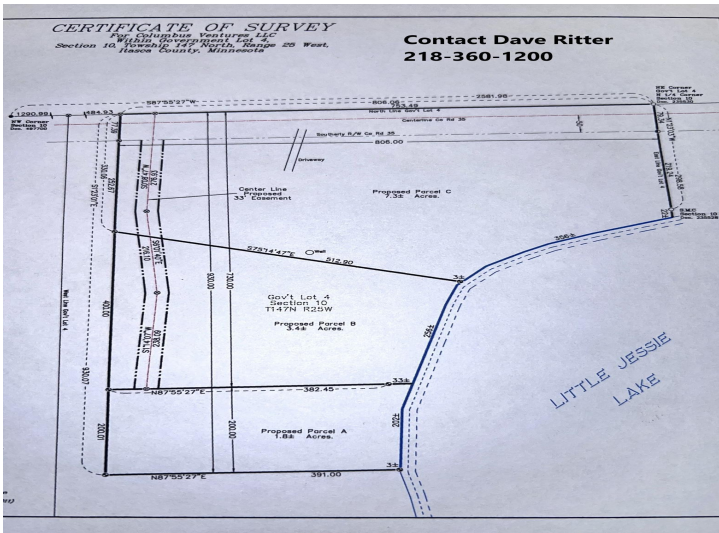
\$199,900
MLS 7098678 Lake Land
Parcel B County Road 35
Deer River MN 56636



website: www.AffinityRealEstate.com | email: info@affinityrealestate.com | office: 218-237-3333 | fax:218-237-3377



\$199,900
MLS 7098678 Lake Land
Parcel B County Road 35
Deer River MN 56636



website: www.AffinityRealEstate.com | email: info@affinityrealestate.com | office: 218-237-3333 | fax: 218-237-3377



\$199,900
 MLS 7098678 Lake Land
 Parcel B County Road 35
 Deer River MN 56636