



MLS 7098830 Residential

\$589,500

2,400 sq ft
4 bedrooms
3 baths

22768 28th Avenue
Hawley MN 56549

Status: Active

Description:

Amazing location close in on this picturesque 4.7-acre ranch-style property! Inside you'll find in-floor heat throughout along with an inviting open concept kitchen, dining area & living room, perfect for entertaining guests or spending quality time with family. Designed for one-level living, the home is easy to navigate & comfortable for all ages! Beautiful tile floors throughout and to the aesthetic appeal. 4 beds 3 baths provide ample space for a growing family or for accommodating guests. The master bedroom is complete with a walk-in closet & private 3/4 bath with double sinks & is very own flex room with a patio, while the other bedrooms offer plenty of space. Additional features include an attached heated 2-stall garage, A 30X50 Heated and insulated outbuilding-shop, Newer SS Appliances' including Washer & Dryer, Newer water softener and filtration system with reverse osmosis water to kitchen and frig.

Additional Details:

Year Built	2010
Lot Acres	4.7
Lot Dimensions	450x460
Garage Stalls	8
School District	150
Taxes	\$5,614
Taxes with Assessments	\$5,664
Tax Year	2026

Additional Features:

Basement: None **Fuel:** Propane **Garage:** 8 **Heat:** Forced Air, Fireplace(s), In-Floor Heating **Sewer:** Septic System Compliant - Yes **Water:** Well **Air Conditioning:** Central Air

Driving Directions:

N/



Listed By:
RE/MAX Legacy Realty

Affinity Real Estate Inc. participates in the Regional Multiple Listing Service of Minnesota, Inc Broker Reciprocity (sm) program, allowing us to display other broker's listings on our website. All properties are subject to prior sale, change or withdrawal.



Call Affinity Real Estate

218-237-3333

info@affinityrealestate.com



Affinity Real Estate - 600 Park Avenue South - Park Rapids MN 56470



website: www.AffinityRealEstate.com | email: info@affinityrealestate.com | office: 218-237-3333 | fax:218-237-3377



\$589,500
MLS 7098830 Residential
22768 28th Avenue
Hawley MN 56549



website: www.AffinityRealEstate.com | email: info@affinityrealestate.com | office: 218-237-3333 | fax: 218-237-3377

Affinity
REAL ESTATE INC

\$589,500
MLS 7098830 Residential
22768 28th Avenue
Hawley MN 56549



website: www.AffinityRealEstate.com | email: info@affinityrealestate.com | office: 218-237-3333 | fax:218-237-3377

Affinity
REAL ESTATE INC

\$589,500
MLS 7098830 Residential
22768 28th Avenue
Hawley MN 56549



website: www.AffinityRealEstate.com | email: info@affinityrealestate.com | office: 218-237-3333 | fax:218-237-3377



\$589,500
MLS 7098830 Residential
22768 28th Avenue
Hawley MN 56549



website: www.AffinityRealEstate.com | email: info@affinityrealestate.com | office: 218-237-3333 | fax:218-237-3377

Affinity
REAL ESTATE INC

\$589,500
MLS 7098830 Residential
22768 28th Avenue
Hawley MN 56549



website: www.AffinityRealEstate.com | email: info@affinityrealestate.com | office: 218-237-3333 | fax:218-237-3377

Affinity
REAL ESTATE INC

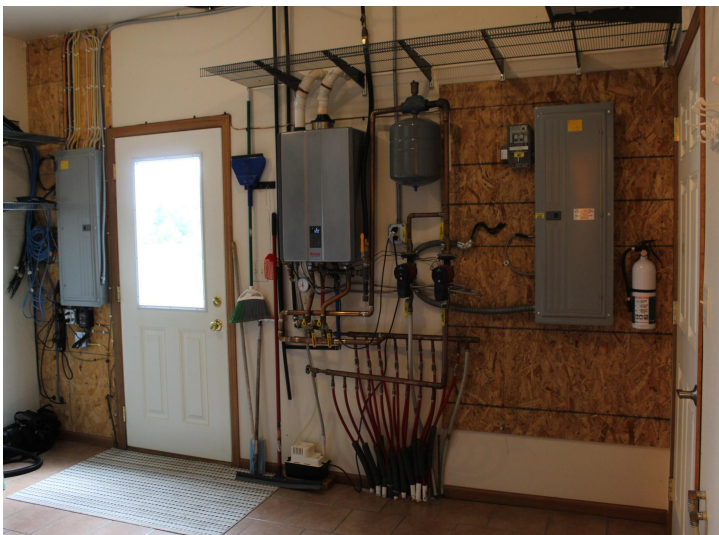
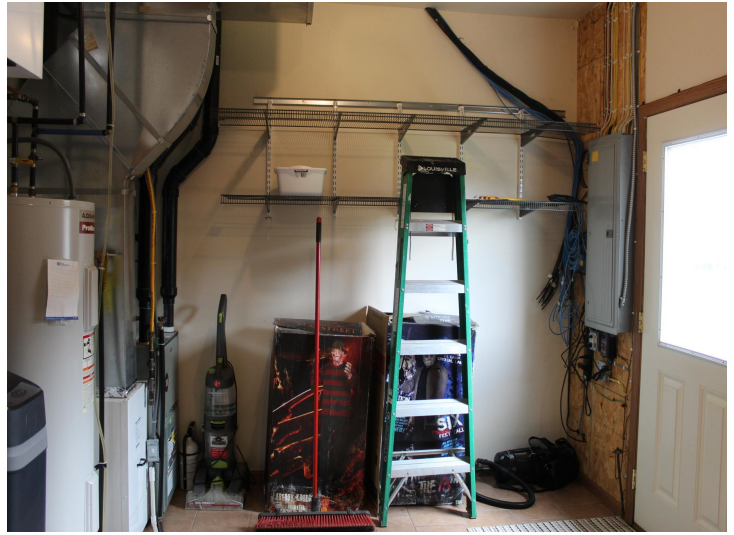
\$589,500
MLS 7098830 Residential
22768 28th Avenue
Hawley MN 56549



website: www.AffinityRealEstate.com | email: info@affinityrealestate.com | office: 218-237-3333 | fax:218-237-3377

Affinity
REAL ESTATE INC

\$589,500
MLS 7098830 Residential
22768 28th Avenue
Hawley MN 56549



website: www.AffinityRealEstate.com | email: info@affinityrealestate.com | office: 218-237-3333 | fax:218-237-3377

Affinity
REAL ESTATE INC

\$589,500
MLS 7098830 Residential
22768 28th Avenue
Hawley MN 56549



website: www.AffinityRealEstate.com | email: info@affinityrealestate.com | office: 218-237-3333 | fax: 218-237-3377

Affinity
REAL ESTATE INC

\$589,500
MLS 7098830 Residential
22768 28th Avenue
Hawley MN 56549



website: www.AffinityRealEstate.com | email: info@affinityrealestate.com | office: 218-237-3333 | fax:218-237-3377



\$589,500
MLS 7098830 Residential
22768 28th Avenue
Hawley MN 56549